




SCHINELLA.



69A Gray Street Plympton SA

3  2  3 

This 2017 quality built Fairmont Home offers more than meets the eye! Positioned in a quiet no through road location with peaceful surrounds, this home has a true sense of space and privacy. Plympton, recently deemed "Adelaide's most liveable location", makes this property highly sought after.

Thoughtful in layout with a light and bright interior, the lounge room provides a spacious entry which flows through to the central living and dining area. This space has glass sliding doors that open out to the tranquil rear yard with garden shed and landscaped grounds with plenty of room to spoil any growing family.

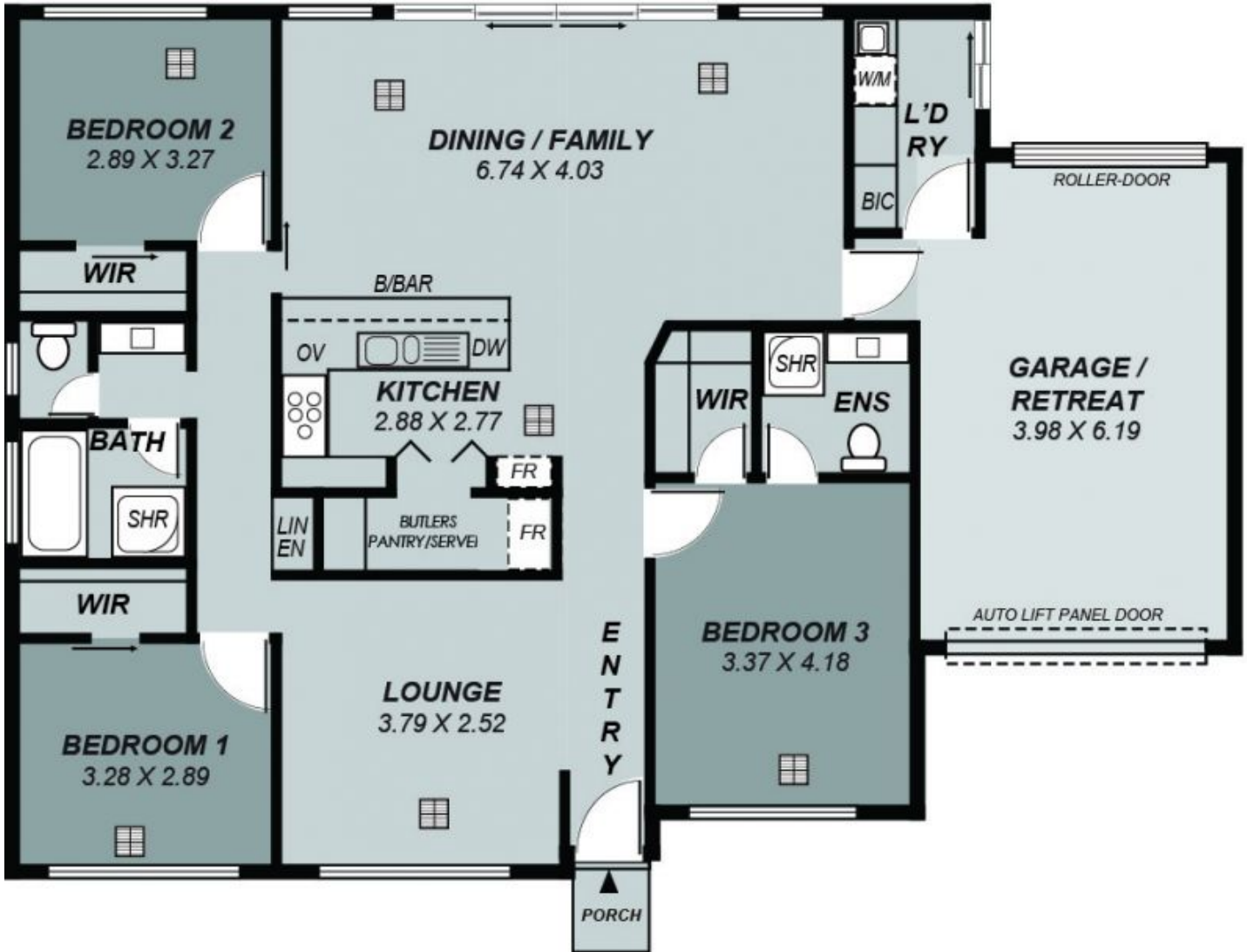
The stylish kitchen serves as the hub of the home. Trendy

[For full version visit the website](https://www.schinellaproperty.com.au/6302421)

Type : House
Building Size : 149 sqm
Land Size : 624 sqm
View : <https://www.schinellaproperty.com.au/6302421>



Marco Schinella
08 8294 4484



*This drawing is for illustration purposes only .
 All measurements are approximate and details intended
 to be relied upon should be independently verified.*

Area	m ²
Total:	149.36