

SCHINELLA.



109 Braeside Avenue Seacombe Heights SA

4 3 6

One of Braeside Avenue's finest homes

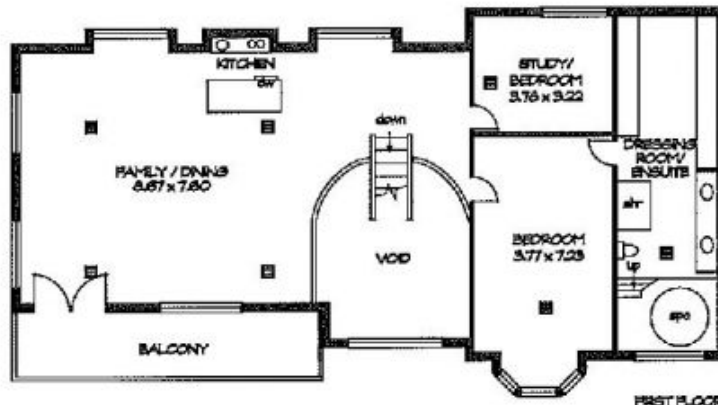
Designed to balance contemporary living with its glorious character features, this magnificent home has the perfect blend of formal and informal living and entertaining areas.

Type : House
Building Size : 43 sqm
Land Size : 786 sqm
View : <https://www.schinellaproperty.com.au/6302418>

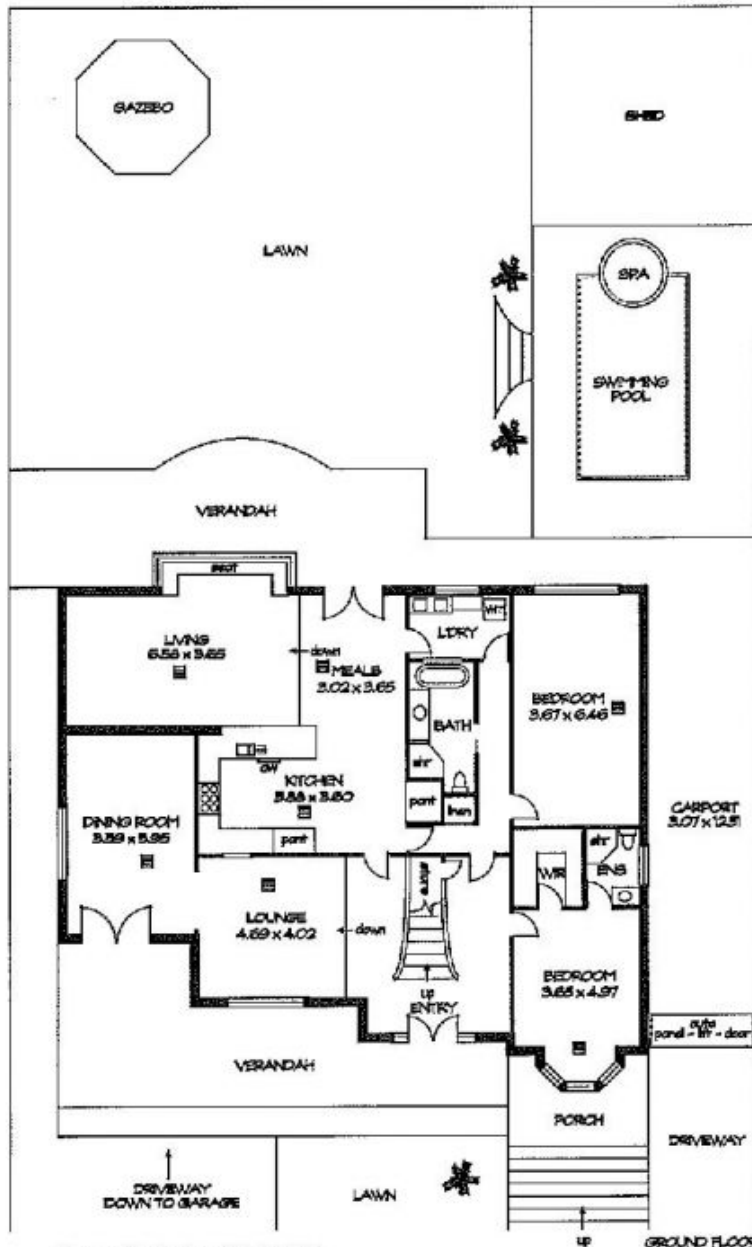
Inviting steps lead the way to large double front doors with elegant glass lead light detailing. These doors open into a spacious light filled entrance foyer, featuring the grand marble staircase that is showcased with a stunning crystal chandelier and high ornate, decorative ceilings. This impressive entrance foyer provides access through to the formal lounge room and secluded dining room.

[For full version visit the website](https://www.schinellaproperty.com.au)

<https://www.schinellaproperty.com.au>



FIRST FLOOR



GROUND FLOOR



LOWER GROUND FLOOR

AREAS (approx)	m ²
GROUND LIVING	2037
FIRST LIVING	1020
BALCONY	25.7
GARAGE	40.9
CARPORT	36.4
TOTAL	4007

