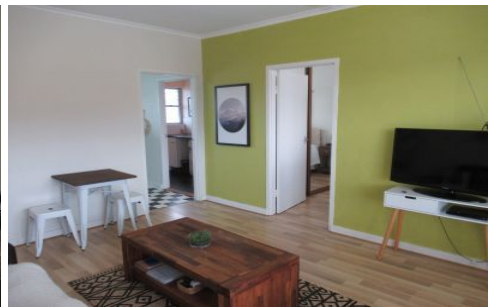


SCHINELLA.



23/2 Harrow Road Somerton Park SA

1  1  1 

This lovely and modern first floor unit is located at the rear of the group and comes with lots of features!

The good sized bedroom includes built-in robes, spacious lounge room, separate kitchen with electric cooking and enough space for dining, trendy new bathroom with bath, separate modern laundry with big linen press, two balconies to enjoy - one facing North the other South. Heating and cooling for all year round comfort! Attractive timber floors to spacious lounge and bedroom.

There is one off street car park.

And all this in walking distance to the beach....

Close to pubic transport, close to Jetty Road shopping & cafes

Type : Unit

View : <https://www.schinellaproperty.com.au/6302417>