

SCHINELLA.



29 Antonio Street Huntfield Heights SA

4 🛏 2 🚿 2 🚗

Located in Paringa Estate at the end of a private no through road, this surprisingly spacious family home offers over 306m² of modern living and entertaining to enjoy. With plenty of space, this home is designed with a flexible floorplan to accommodate growing families.

Neutral tones with tiled floors, this attractive residence has a welcoming entrance foyer, separate lounge and rear light-filled open plan kitchen, dining, family and living area. This space overlooks the fabulous undercover entertaining deck with ceiling fan and low-maintenance landscaped yard capturing seaviews.

The well-appointed kitchen includes a large breakfast bar with double sink, stainless steel gas cooking and oven, dishwasher, walk-in pantry, elegant glass splash back, ample storage and space for a double size fridge.

[For full version visit the website](https://www.schinellaproperty.com.au/6302411)

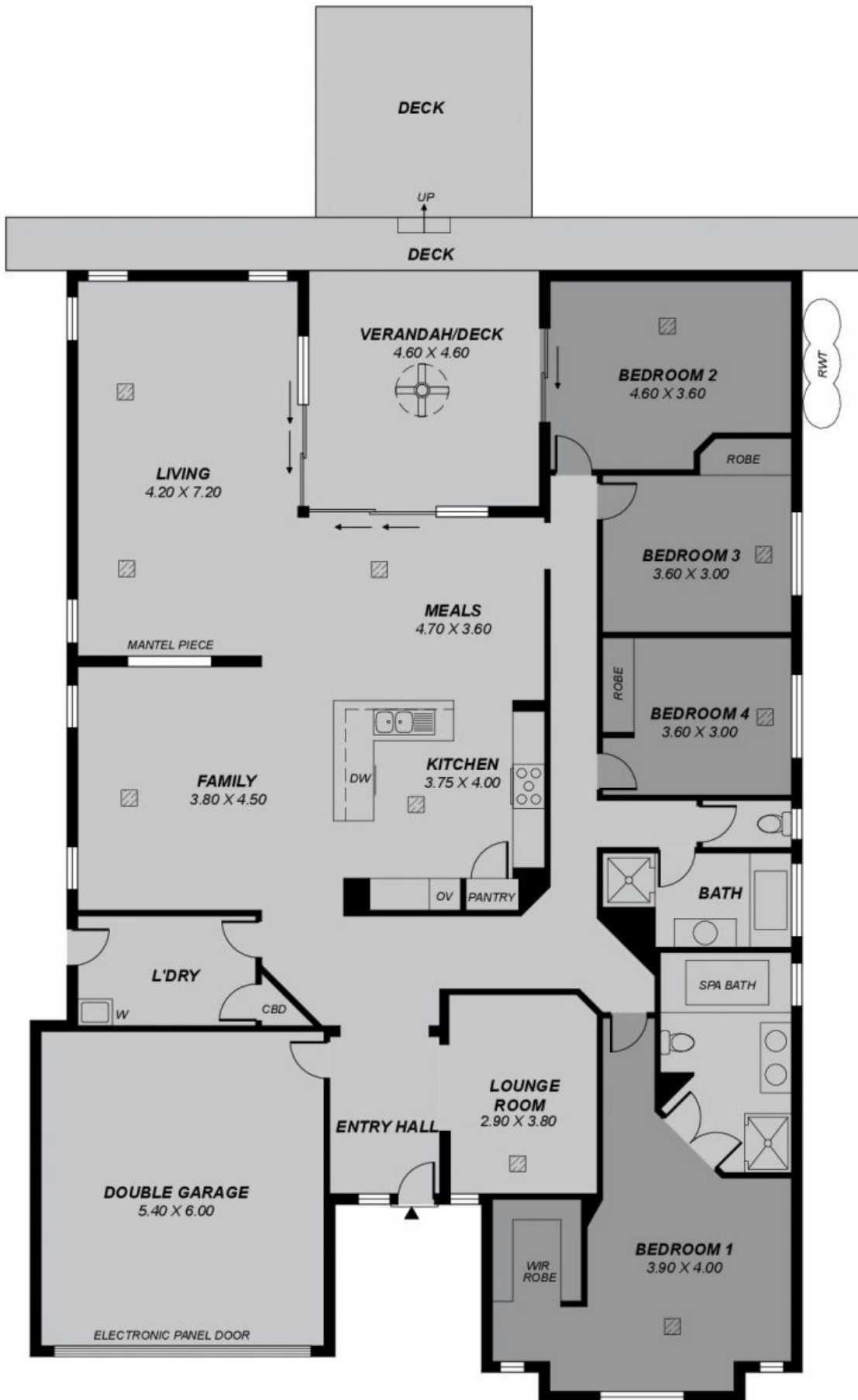
Type : House
Building Size : 306 sqm
Land Size : 574 sqm
View : <https://www.schinellaproperty.com.au/6302411>



DeArna Schinella
08 8294 4484



Pat Schinella
08 8294 4484



*This drawing is for illustration purposes only.
 All measurements are approximate and details intended
 to be relied upon should be independently verified.*

Area	m ²
Living	234.77
Verandah/Deck	19.80
Deck	16.52
Garage	35.65
Total	306.75