


SCHINELLA.



13 Sandison Terrace Glenelg North SA

3  1  3 

Superb Glenelg North position. A 10-minute stroll to the tranquil Patawalonga, the lovely sandy beaches of Glenelg and the cosmopolitan lifestyle of restaurants, cafes and shopping offered on Jetty Road, Glenelg. This house offers a quiet location that is close enough to, yet shielded from all the hustle & bustle of city life.

Walking distance to bus stops and the tram makes for easy access into the City.

Type : House

View : <https://www.schinellaproperty.com.au/6302410>

This spacious family home offers:-

- Multiple living areas
- Light filled lounge room with gas heating & wall mounted r/c air-conditioner

[For full version visit the website](https://www.schinellaproperty.com.au)

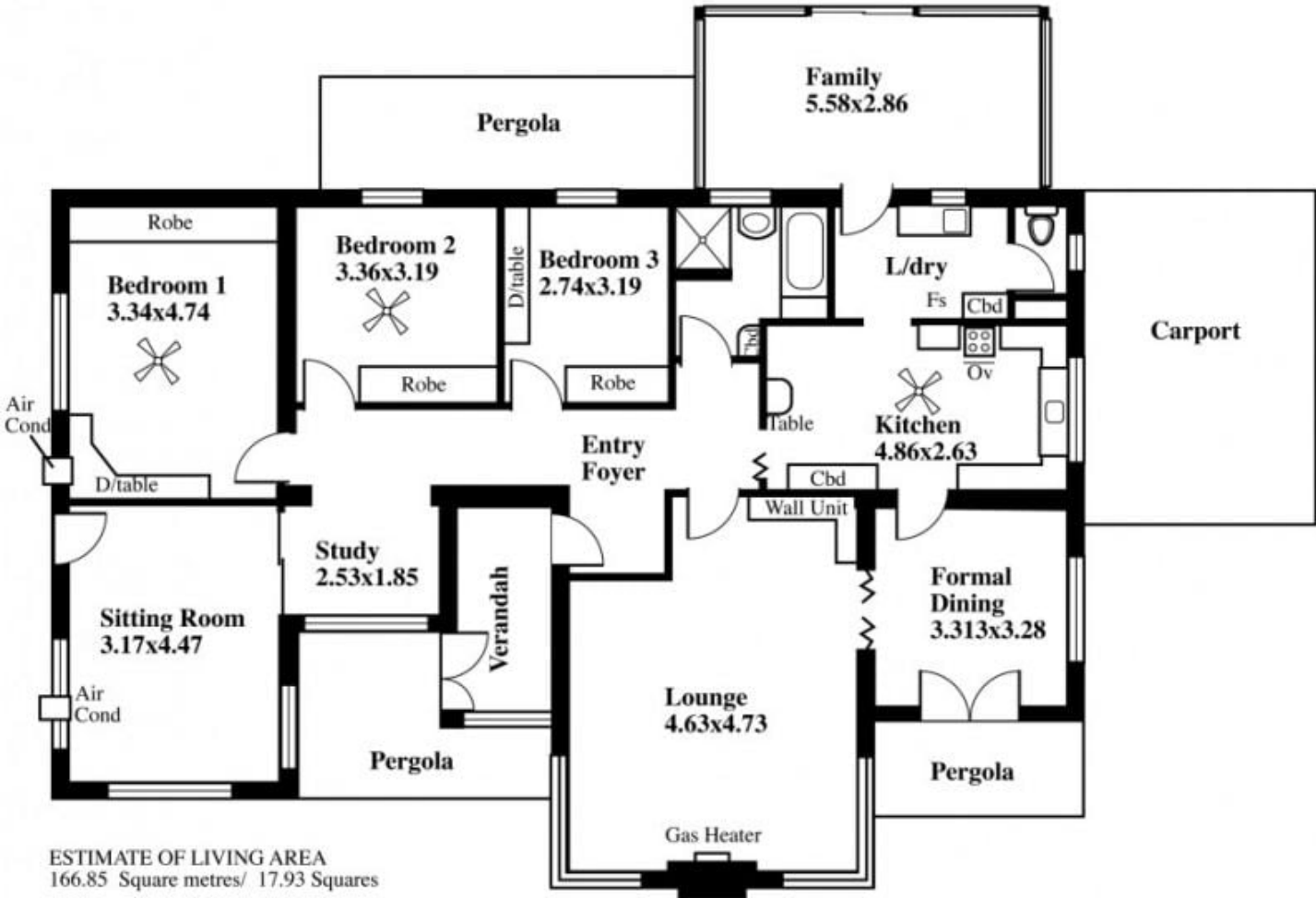
<https://www.schinellaproperty.com.au>

13 Sandison Terrace, Glenelg North

DISCLAIMER
 This drawing is AN ARTISTS IMPRESSION ONLY
 and is for ILLUSTRATION PURPOSES only
 (Drawing is not necessarily to scale)
 Every endeavour has been taken verify correct details.
 The drawing and the information contained is
 NOT intended to be part of any contract. All
 measurements are approximate and details intended
 to be relied upon should be independently verified.



**Double
Garage**



ESTIMATE OF LIVING AREA
 166.85 Square metres/ 17.93 Squares

Desk Top Image - (Y1015-75)