

# SCHINELLA.



**51 Whitmore Square Adelaide SA**

**3**  **1**  **1** 

This quirky cottage oozes the charm of yesterday highlighting character and uniqueness has been freshly painted throughout and new blinds in the bedrooms.

**Type** : House

**View** : <https://www.schinellaproperty.com.au/6302405>

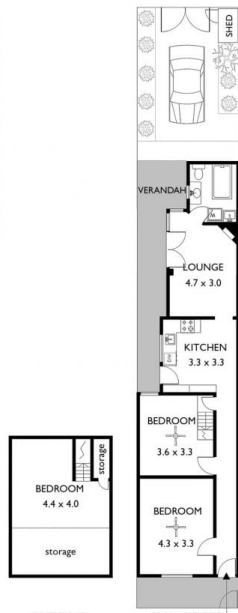
Featuring floorboards throughout there are 2 great sized bedrooms and a fabulous large attic which can be occupied as another bedroom, study, second lounge area, or great storage space.

The kitchen with gas cooktop and lounge room with a cosy gas fire place is perfect for those chilly winter nights, and overlooks the private courtyard area.

With the visual appeal of the parkland directly opposite, a rear entry for car parking, and short stroll to the markets

[For full version visit the website](#)

<https://www.schinellaproperty.com.au>



51 Whitmore Sq Adelaide

Approx Gross Living Area = 93m<sup>2</sup>

For illustrative purposes only. All measurements are approximate.  
Andrew Waters Photography