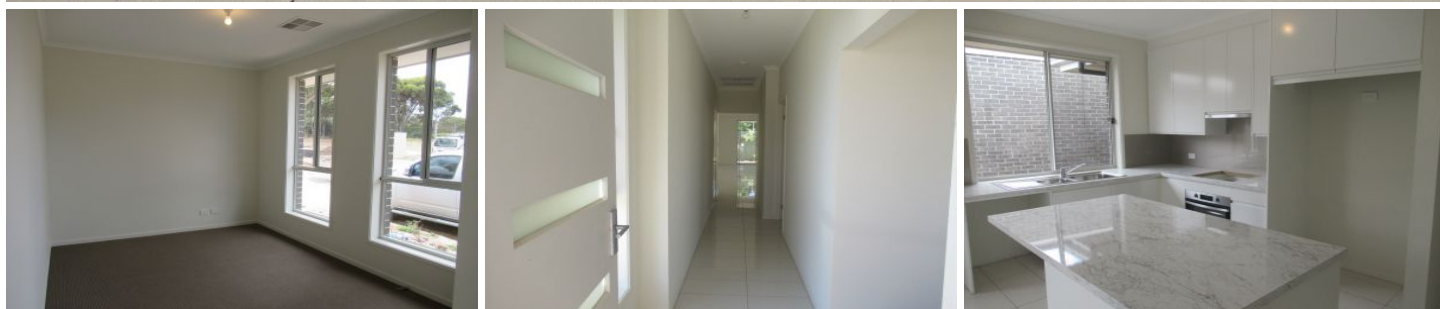





SCHINELLA.



2/30 Cooke Street Modbury SA

3  **2**  **4** 

*Enter the property via the street in between 28 & 32 Cooke Street new subdivision *

New home .Positioned in a quiet cul de sac with 3 spacious Double Bedrooms, 2 Living areas ,open plan kitchen/Meals/living area with study nook & lovely modern neutral finishes throughout to suit most decors

Featuring 3 Double sized Bedrooms all with Mirrored Built in Robes main Bedroom with Walk in Robe and Ensuite. Modern Kitchen with stainless steel appliances, Dishwasher, gas cooking with lots of storage and study nook in the Large open plan Kitchen /Meals /Living area which over looks the tiled Outdoor Alfresco Area with gas outlet. Family bathroom with large full sized bath , separate

[For full version visit the website](#)

Type : House

View : <https://www.schinellaproperty.com.au/6302381>

<https://www.schinellaproperty.com.au>