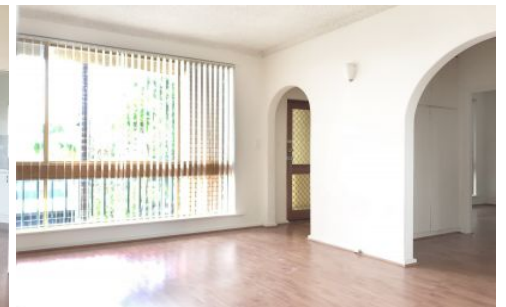





SCHINELLA.



6/351-353 Sir Donald Bradman Drive Brooklyn Park SA

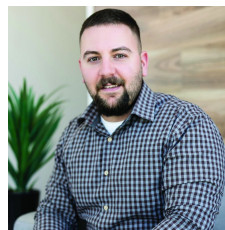
2  1  1 

This first floor unit boasts 80 square meters of living. The entrance door opens onto an alcove which leads into a spacious open plan lounge and dining area. A sliding door leads into the fully renovated kitchen. The kitchen leads into a separate Laundry which is separated from the kitchen with bifold doors. An external rear door allows access from the kitchen onto the rear balcony.

The Lounge and Dining lead into a hallway fitted with built-in linen cupboards. This hallway leads into the bathroom and two rather large bedroom, both with built-in, floor-to-ceiling wardrobes. The floating floor boards enhance a feeling of warmth. All windows are fitted with vertical blinds which ensure privacy at night and sunlight entry during the day. The unit has one off-street car park in

Type : Unit

View : <https://www.schinellaproperty.com.au/6302355>



Anton Schinella
(08) 8294 4484

[For full version visit the website](https://www.schinellaproperty.com.au)

<https://www.schinellaproperty.com.au>

