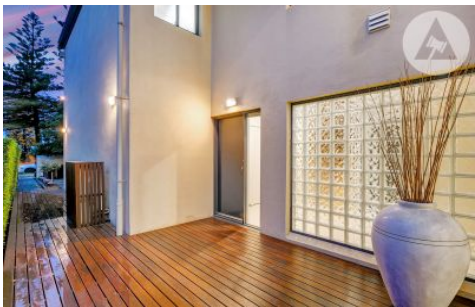





# SCHINELLA.



99A Tapleys Hill Road Glenelg North SA

4  2  2 

Blending contemporary living with character and flair, this residence boasts a highly sought after seaside location in Glenelg North, metres from the picturesque Patawolonga.

With a private street frontage, this established home has a spacious floorplan across two levels. Set behind secure high fencing with electric gate and intercom, an inviting path leads to the entrance deck of this home. Inside features elegant gloss tiles with clean modern lines. The light-filled foyer seamlessly flows into the open plan living and entertaining spaces. Overlooking the lounge and dining areas is the centrally located kitchen. Designed in neutral tones, the kitchen offers abundant bench space, built-in pantry, double sink, dishwasher and electric cooking.

**Type** : House  
**Building Size** : 296.12 sqm  
**Land Size** : 326 sqm  
**View** : <https://www.schinellaproperty.com.au/6302350>



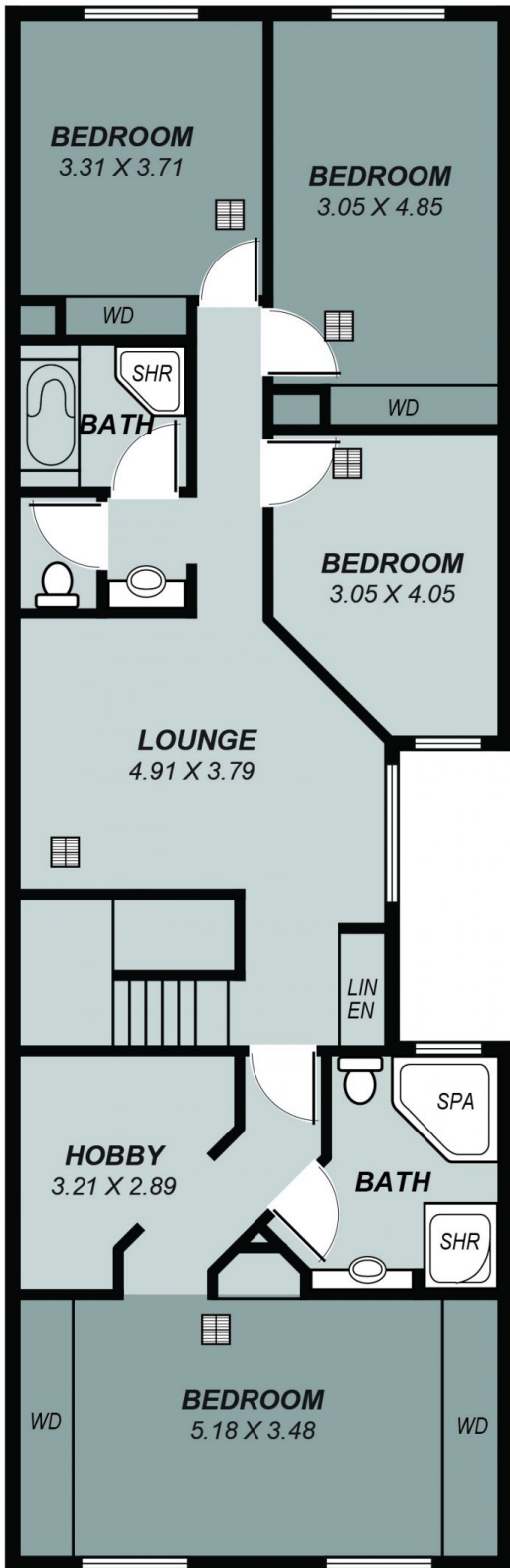
**DeArna Schinella**  
08 8294 4484



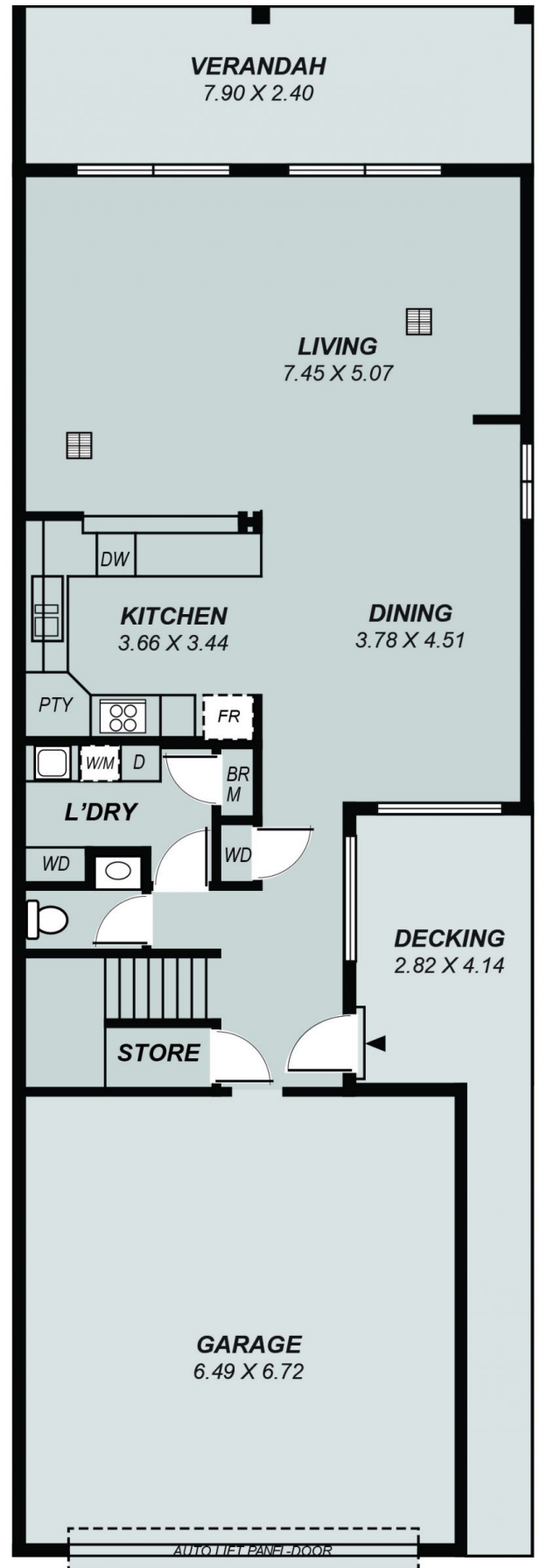
**Pat Schinella**  
08 8294 4484

[For full version visit the website](https://www.schinellaproperty.com.au)

<https://www.schinellaproperty.com.au>



**UPPER LEVEL**



**LOWER LEVEL**

*This drawing is for illustration purposes only .  
 All measurements are approximate and details intended  
 to be relied upon should be independently verified.*

Area	m <sup>2</sup>
Lower Living:	93.40
Upper Living:	128.47
Garage:	43.61
Verandah:	18.96
Decking:	11.67
<b>Total:</b>	<b>296.12</b>