




SCHINELLA.



17A Birkinshaw Avenue Tranmere SA

4  3  2 

Seamlessly blending into a desirable character-filled street, this executive two storey residence offers superb modern family living.

An easy-care front courtyard leads to the entrance of this home with its spacious light-filled foyer. The entrance hall provides handy internal access from the double garage and flows through to the spacious open plan living areas.

Designed in soft neutral tones, the well-appointed kitchen overlooks the large family and dining areas. The kitchen includes stainless steel oven and gas cook top with range hood, double sink, BOSCH dishwasher and pantry. Just off the kitchen, is a secluded courtyard within tranquil garden setting.

The central living area features elegant french doors that open out to the undercover paved entertaining area with

Type : House
Building Size : 278 sqm
Land Size : 488 sqm
View : <https://www.schinellaproperty.com.au/6302324>



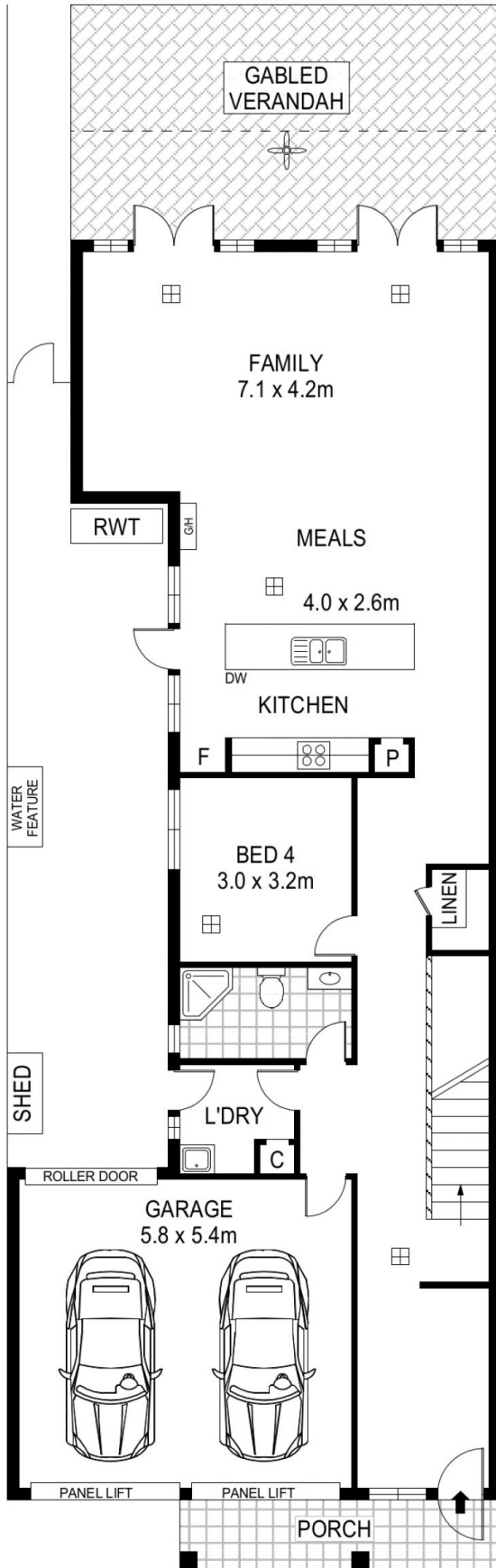
DeArna Schinella
08 8294 4484



Pat Schinella
08 8294 4484

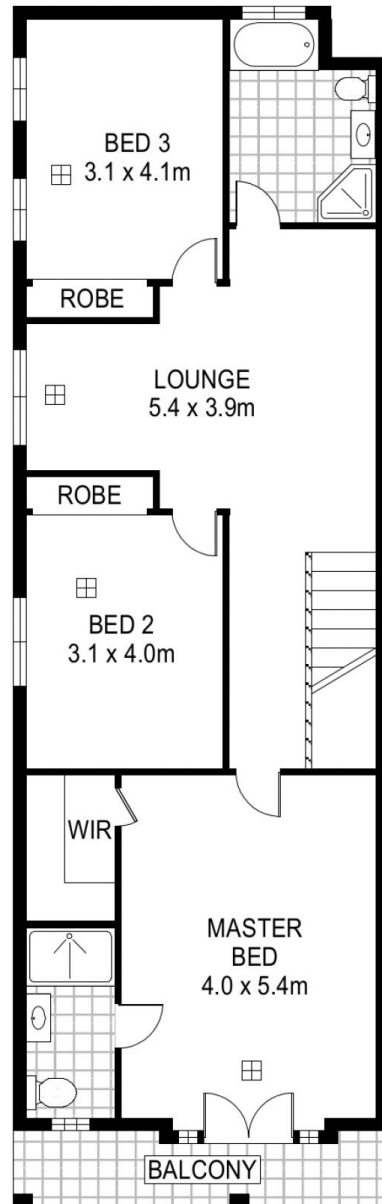
[For full version visit the website](https://www.schinellaproperty.com.au)

<https://www.schinellaproperty.com.au>



GROUND FLOOR

Area	m ²
Living	202
Garage	31
Balcony	7
Porch	7
Verandah	31
Total	278



FIRST FLOOR



Scale in metres. Indicative only. Dimensions are approximate. All information contained herein is gathered from sources we believe to be reliable. However we cannot guarantee its accuracy and interested persons should rely on their own enquiries

17A Birkinshaw Avenue, Tranmere