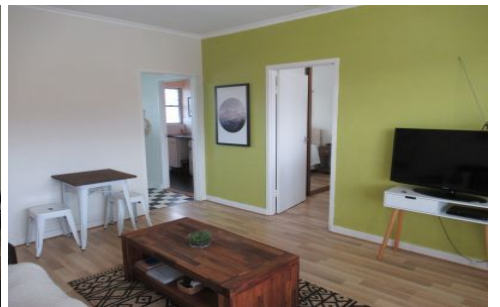


# SCHINELLA.



23/2 Harrow Road Somerton Park SA

1  1  1 

This lovely first floor updated modern unit located at the rear of the group comes with lots of features!

Good size bedroom Inc. large built in robes, wooden floors in lounge and bedroom, big kitchen with electric cooking and enough space for a little dining table, separate good sized lounge, beautiful Trendy New bathroom with bath , modern separate laundry with big linen press and 2 Balconies, one facing North the other South. Heating and cooling for all year round comfort!

There is one off street car park.

And all this in walking distance to the beach....

Close to pubic transport , close to Jetty Road shopping & cafes

6 Month Lease Available

[For full version visit the website](https://www.schinellaproperty.com.au/6302311)

**Type** : Unit

**View** : <https://www.schinellaproperty.com.au/6302311>