

# SCHINELLA.



## 47 Fairview Terrace Clearview SA

3  2  2 

This brand residence featuring modern design elements to create the ultimate in contemporary and low maintenance living and entertaining.

Superbly presented with a touch of creative flair, the entrance opens into the light filled lounge room, featuring a large picture window and striking timber floorboards.

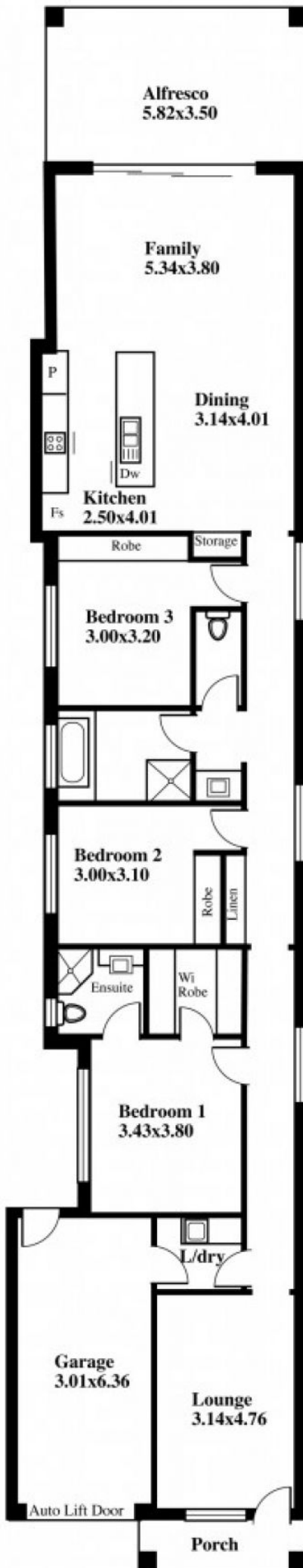
With the clever design of elegant window panels featured throughout, the entrance hall flows through to the central living of this home, the spacious open plan kitchen, dining and family areas. Here the kitchen has been finished with up to the minute features; trendy tiled splash back with two toned cabinetry and large island bench complemented by chic pendant lighting. European stainless steel appliances

**Type** : House  
**Building Size** : 203 sqm  
**Land Size** : 390 sqm  
**View** : <https://www.schinellaproperty.com.au/6302267>

[For full version visit the website](https://www.schinellaproperty.com.au)

<https://www.schinellaproperty.com.au>

## 47 Fairview Terrace, Clearview



### DISCLAIMER

This drawing is AN ARTISTS IMPRESSION ONLY  
and is for ILLUSTRATION PURPOSES only  
 (Drawing is not necessarily to scale)  
 Every endeavour has been taken to verify correct details.  
 The drawing and the information contained is  
 NOT intended to be part of any contract. All  
 measurements are approximate and details intended  
 to be relied upon should be independently verified.

ESTIMATE OF AREA  
 ALFRESCO 20.37 Square metres/ 2.18 Squares  
 HOUSE 176.33 Square metres/ 18.95 Squares  
 (Including Garage)

TOTAL 196.70 Square metres/ 21.13 Squares

Desk Top Image - (Y0216-24)