



# SCHINELLA.



**145A Military Road Henley Beach South SA**

**3**  **2**  **1** 

Be the first to move into this brand new property perfectly located in the popular suburb of Henley Beach South. With commanding street appeal these homes are positioned at the tranquil end of Military Rd. A short 100m stroll to the esplanade and the beautiful Henley Beach.

**Type** : House

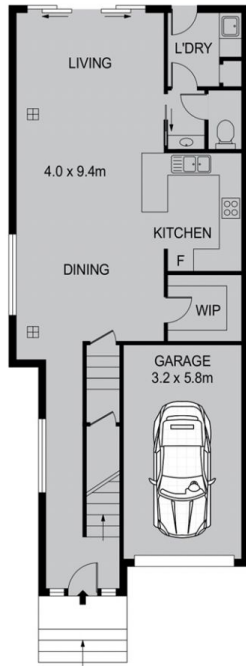
**View** : <https://www.schinellaproperty.com.au/6302255>

Perfect if you are looking for a low maintenance property close to the beach, or a family with zoning to Henley High School and only 200m from Henley Beach Primary School and short distance to Star Of The Sea Primary School.

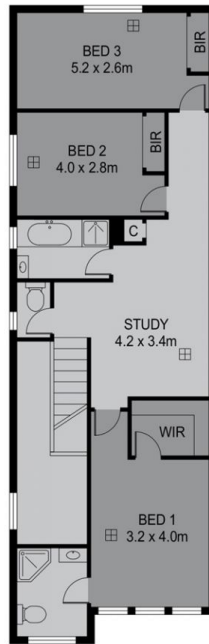
These properties both offer 3 double bedrooms and 2 ½ bathrooms. Neutral tones have been thoughtfully selected throughout, to allow plenty of scope for you to add your own decorative touches. The chic white kitchens are well

[For full version visit the website](#)

<https://www.schinellaproperty.com.au>



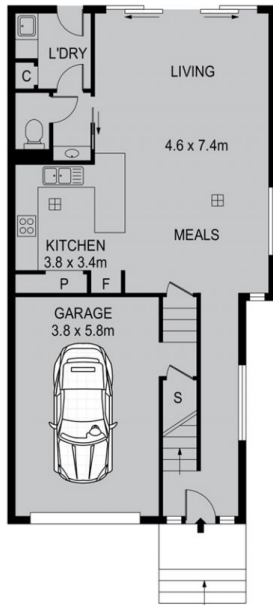
GROUND FLOOR



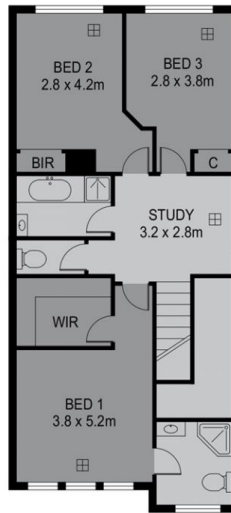
FIRST FLOOR

145 MILITARY ROAD

INT : 153m<sup>2</sup>  
GARAGE : 19m<sup>2</sup>



GROUND FLOOR



FIRST FLOOR

145A MILITARY ROAD

INT : 133m<sup>2</sup>  
GARAGE : 12m<sup>2</sup>

ALL MEASUREMENTS APPROX.