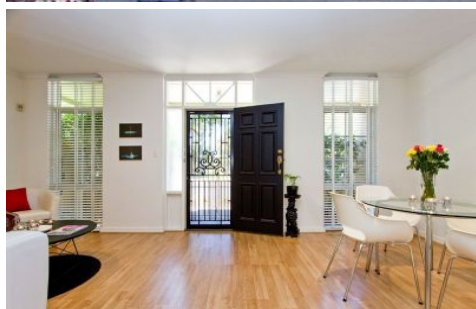


SCHINELLA.



65 MacKinnon Parade North Adelaide SA

3  **1**  **1** 

This striking two-storey, solid brick townhouse is ideally positioned opposite the beautiful Adelaide University parklands & children's playground. Steps to the popular Lion Hotel & Restaurant, cosmopolitan Melbourne Street and an enjoyable walk to Adelaide Oval or over the river to the City. Parkland view and Cosmopolitan Precinct - the perfect location!

Type : Townhouse

View : <https://www.schinellaproperty.com.au/6302235>

The spacious, open plan living & dining areas provide the park outlook, a gas wall heater, modern low-voltage down-lights, white-painted timber venetians and stylish 'timber look' flooring throughout all ground floor living areas. The updated well equipped Kitchen features European appliances, dishwasher, gas cooking and lots of storage.

[For full version visit the website](https://www.schinellaproperty.com.au)

<https://www.schinellaproperty.com.au>

