

SCHINELLA.



50A Amber Road Hope Valley SA

4  2  4 

Making a striking first impression, this architecturally designed residence seamlessly blends style, space and sophistication. Modern design elements fuse perfectly to create the ultimate in contemporary living.

Positioned securely behind electric gates with video intercom, the front door opens to a wide entrance hall with stunning wooden floorboards that shine under feature wall lights that flow throughout this well-appointed home.

The entrance hall leads to the open plan living and entertaining spaces of this home. Overlooking the dining and lounge area is the glamorous kitchen. Immaculately presented and tastefully designed with ceaser stone bench tops, smoky-mirrored splash back and gloss white

Type : House
Building Size : 264 sqm
Land Size : 640 sqm
View : <https://www.schinellaproperty.com.au/6302233>

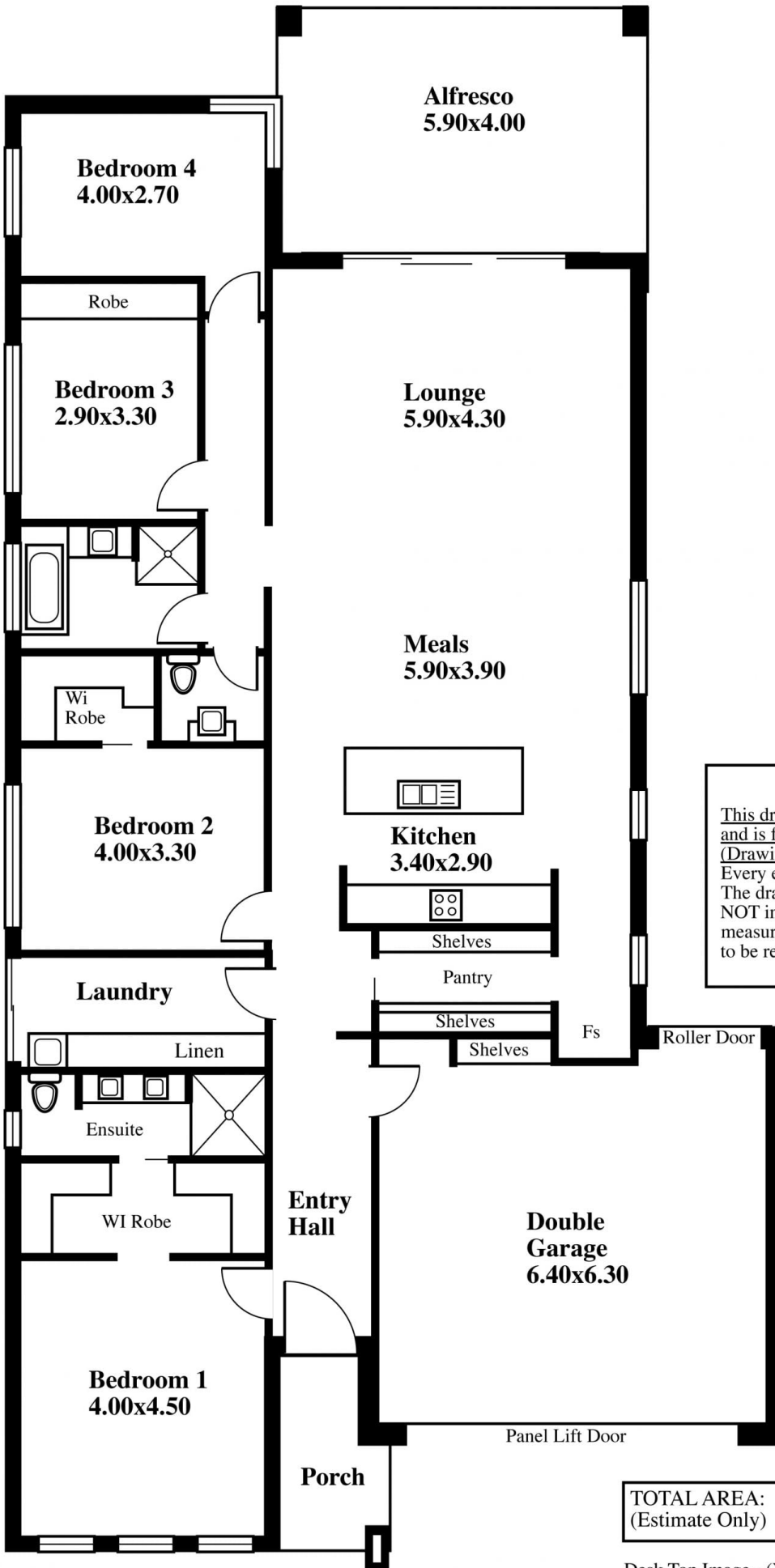


DeArna Schinella
08 8294 4484

[For full version visit the website](https://www.schinellaproperty.com.au)

<https://www.schinellaproperty.com.au>

50A Amber Road, Hope Valley



DISCLAIMER
 This drawing is AN ARTISTS IMPRESSION ONLY
 and is for ILLUSTRATION PURPOSES only
 (Drawing is not necessarily to scale).
 Every endeavour has been taken verify correct details.
 The drawing and the information contained is
 NOT intended to be part of any contract. All
 measurements are approximate and details intended
 to be relied upon should be independently verified.

TOTAL AREA: (Estimate Only)	264.90 m squ / 28.47 sqs (Includes Porch, Alfresco & Garage)
---------------------------------------	---