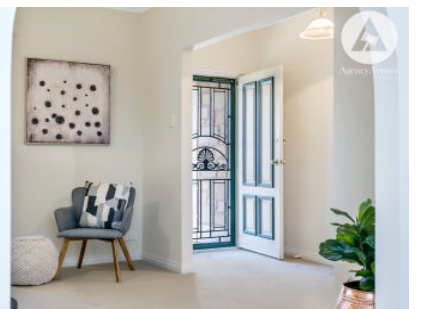


SCHINELLA.



6 Edward Davies Street North Plympton SA

3 1 1

Recently deemed Adelaide's most livable location, this attractive stone fronted courtyard residence is perfectly located part way between the city and the beach, close to local shops, trendy cafes and public transportation.

Offering great street appeal, inside comprises a welcoming entrance with access into the light and bright living room which follows through to the open plan kitchen and dining spaces of this home. The neutral toned kitchen offers a large built-in pantry, breakfast bar, double sink, electric cook top and oven with ample storage.

The extensive outdoor entertaining area is a real highlight of this home. The undercover pitched roof pergola and carport with roller door is a fabulous outdoor entertaining

[For full version visit the website](https://www.schinellaproperty.com.au/6302217)

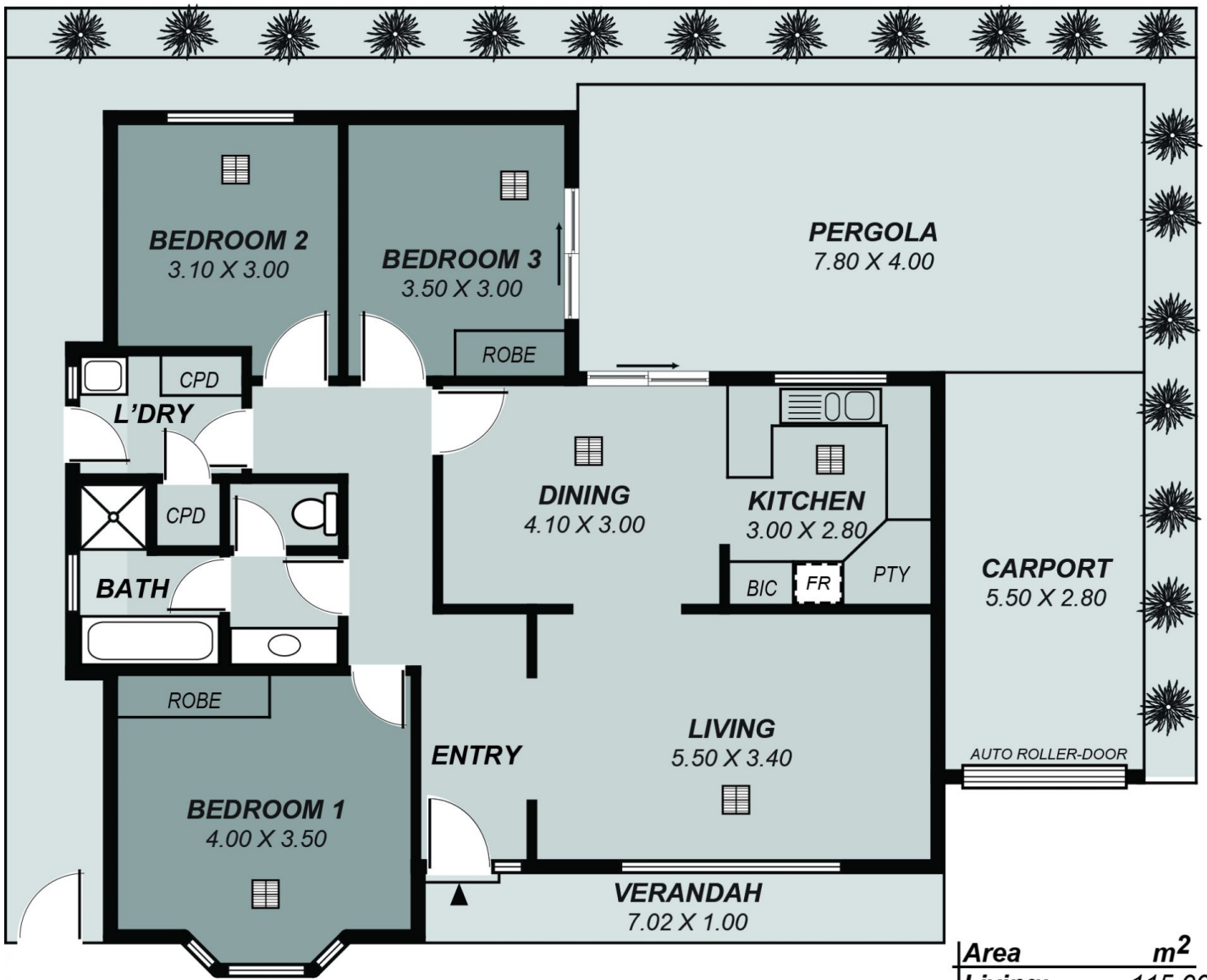
Type : House
Building Size : 168.62 sqm
Land Size : 280 sqm
View : <https://www.schinellaproperty.com.au/6302217>



DeArna Schinella
08 8294 4484



Pat Schinella
08 8294 4484



*This drawing is for illustration purposes only .
 All measurements are approximate and details intended
 to be relied upon should be independently verified.*

Area	m ²
Living:	115.00
Carport:	15.40
Pergola:	31.20
Verandah:	7.02
Total:	168.62