

SCHINELLA.



32 Jagger Crescent WOODCROFT SA

3 2 2

This beautiful home has been lovingly maintained by its current owners set on 561sqm (approx.) nestled neatly in the suburb of Woodcroft.

This home offers three good sized bedrooms, the main comprising of a built in robe as well as a walk in robe and ensuite, the second bedroom also has a built in robe.

Neutral tones have been selected throughout this home affording you scope for adding your own colour choices. Large picture windows in the lounge and main bedroom allowing plenty of natural light to flood in.

The well planned kitchen overlooking the family room has ample storage as well as a walk-in pantry. Ducted

Type : House
Land Size : 561 sqm
View : <https://www.schinellaproperty.com.au/6302183>



Jennifer Wilson-Gage
08 8294 4484

[For full version visit the website](https://www.schinellaproperty.com.au)

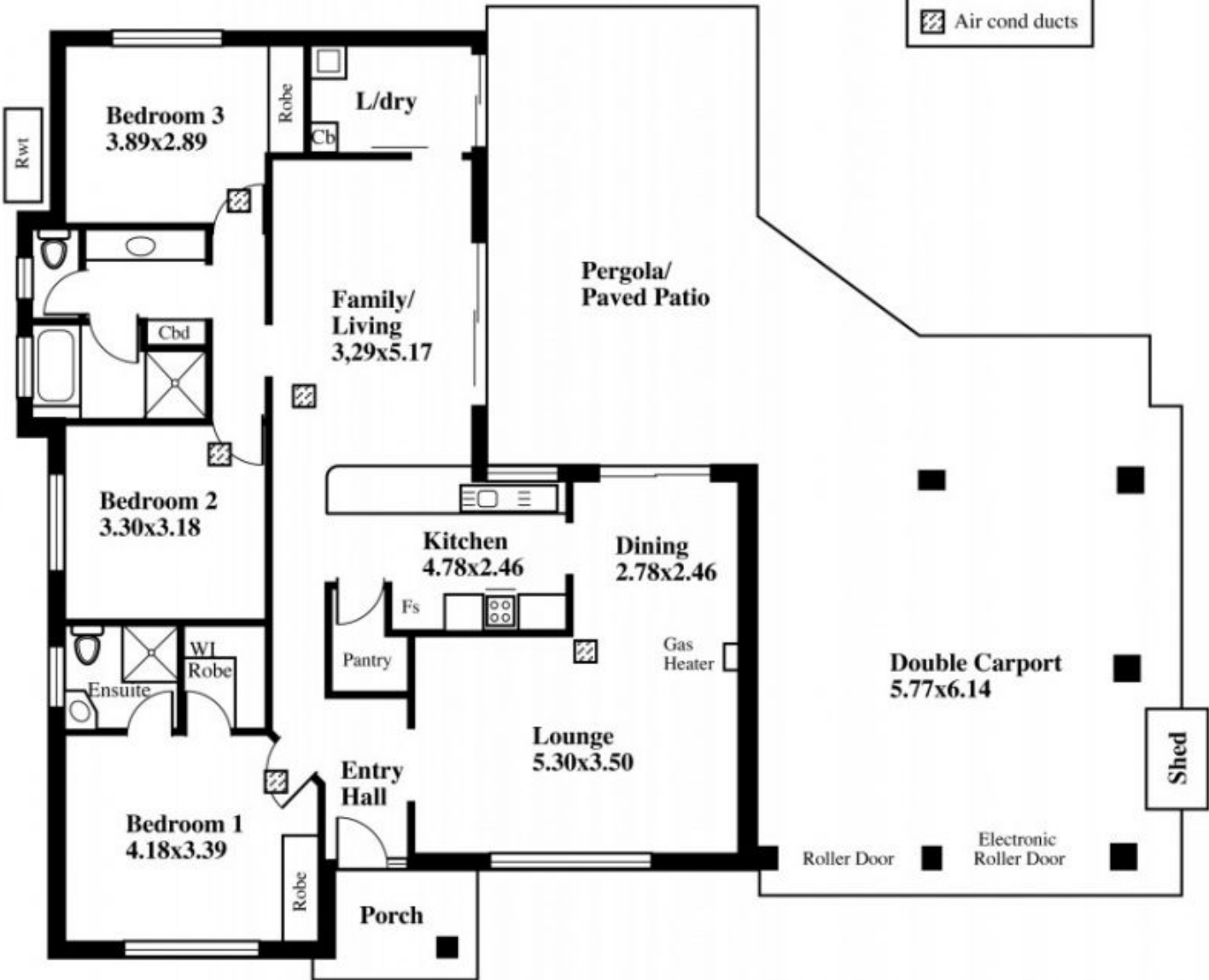
<https://www.schinellaproperty.com.au>

32 Jagger Crescent, Woodcroft

Garden Shed
(At Rear)

DISCLAIMER
 This drawing is AN ARTISTS IMPRESSION ONLY and is for ILLUSTRATION PURPOSES only (Drawing is not necessarily to scale).
 Every endeavour has been taken verify correct details. The drawing and the information contained is NOT intended to be part of any contract. All measurements are approximate and details intended to be relied upon should be independently verified.

LEGEND
 Air cond ducts



Desk Top Image - (Y0416-39)

TOTAL AREA: (Estimate Only)	133.79 m ² / 14.38 sqs Living Area Only
---------------------------------------	---