

SCHINELLA.



33 Moore Road REYNELLA SA

5 🛏 2 🚿 3 🚗

Contact Agent to Arrange Inspection

With grand street appeal, this picture perfect family residence has been designed to offer the best in both formal and informal living and entertaining areas. Attractive manicured gardens lead to the spacious front entrance, featuring elegant lead light windows and character staircase. Charming character features of this home compliment striking timber floors that flow throughout the downstairs living areas.

The foyer provides double doors into the light filled lounge and formal dining areas. This space features cosy carpet underfoot and large picture windows. Located adjacent this area is the fifth bedroom or home

[For full version visit the website](https://www.schinellaproperty.com.au/6302178)

Type : House
Building Size : 33 sqm
Land Size : 576 sqm
View : <https://www.schinellaproperty.com.au/6302178>



Pat Schinella
08 8294 4484



DeArna Schinella
08 8294 4484

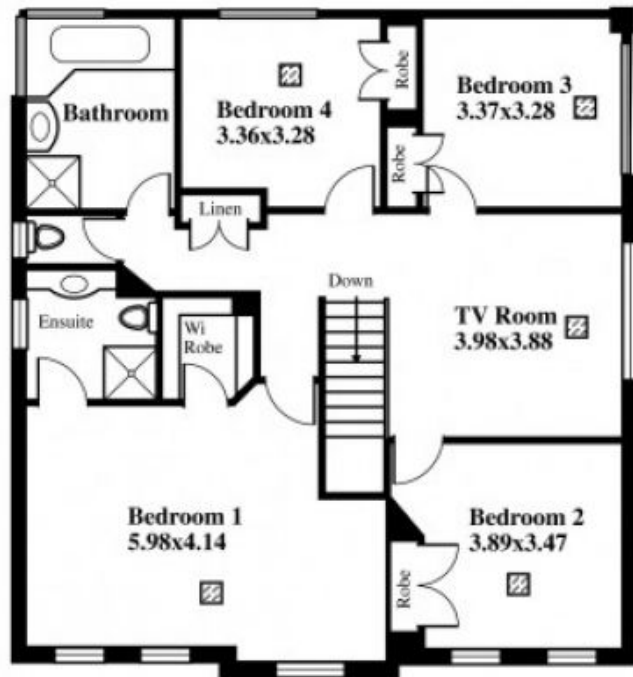
<https://www.schinellaproperty.com.au>

33 Moore Road, Reynella

DISCLAIMER

This drawing is AN ARTISTS IMPRESSION ONLY and is for ILLUSTRATION PURPOSES only (Drawing is not necessarily to scale).
Every endeavour has been taken verify correct details. The drawing and the information contained is NOT intended to be part of any contract. All measurements are approximate and details intended to be relied upon should be independently verified.

Garden Shed
2.98x3.00



ESTIMATE OF AREA

HOUSE
GROUND FLOOR 150.00 Square metres/ 16.10 Squares
UPSTAIRS 117.50 Square metres/ 12.60 Squares

PORCH 3.60 Square metres// 0.40 Squares

GARAGE 35.3 Square metres. 3.80 Squares

TOTAL 306.40 Square metres/ Squares

LEGEND

☒ Air
☒ Cond ducts