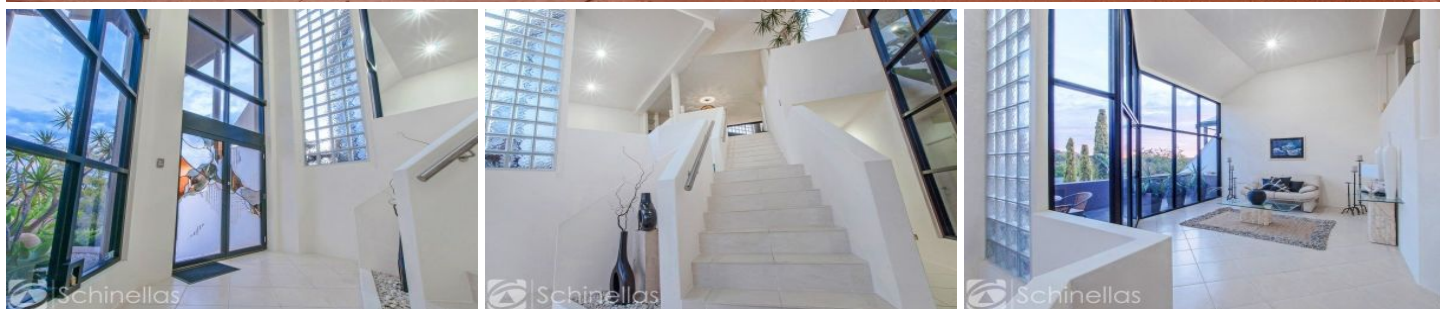


# SCHINELLA.



## 44 Cobbler Drive GREENWITH SA

4 🛏 2 🚗 2 🚗

An iconic home, this luxurious residence showcases executive style living of the highest standard. Perfect for professionals or couples looking to enjoy a lavish lifestyle full of entertaining.

Architecturally designed to draw in natural light from every angle and capture scenic hills views, this home is the epitome of modern living. Clean simple lines combined with natural stone materials both inside and out give this home sophisticated style and beauty.

Across multiple levels with 250sqm of living space, this home is immaculately presented and tastefully decorated with quality finishes throughout.

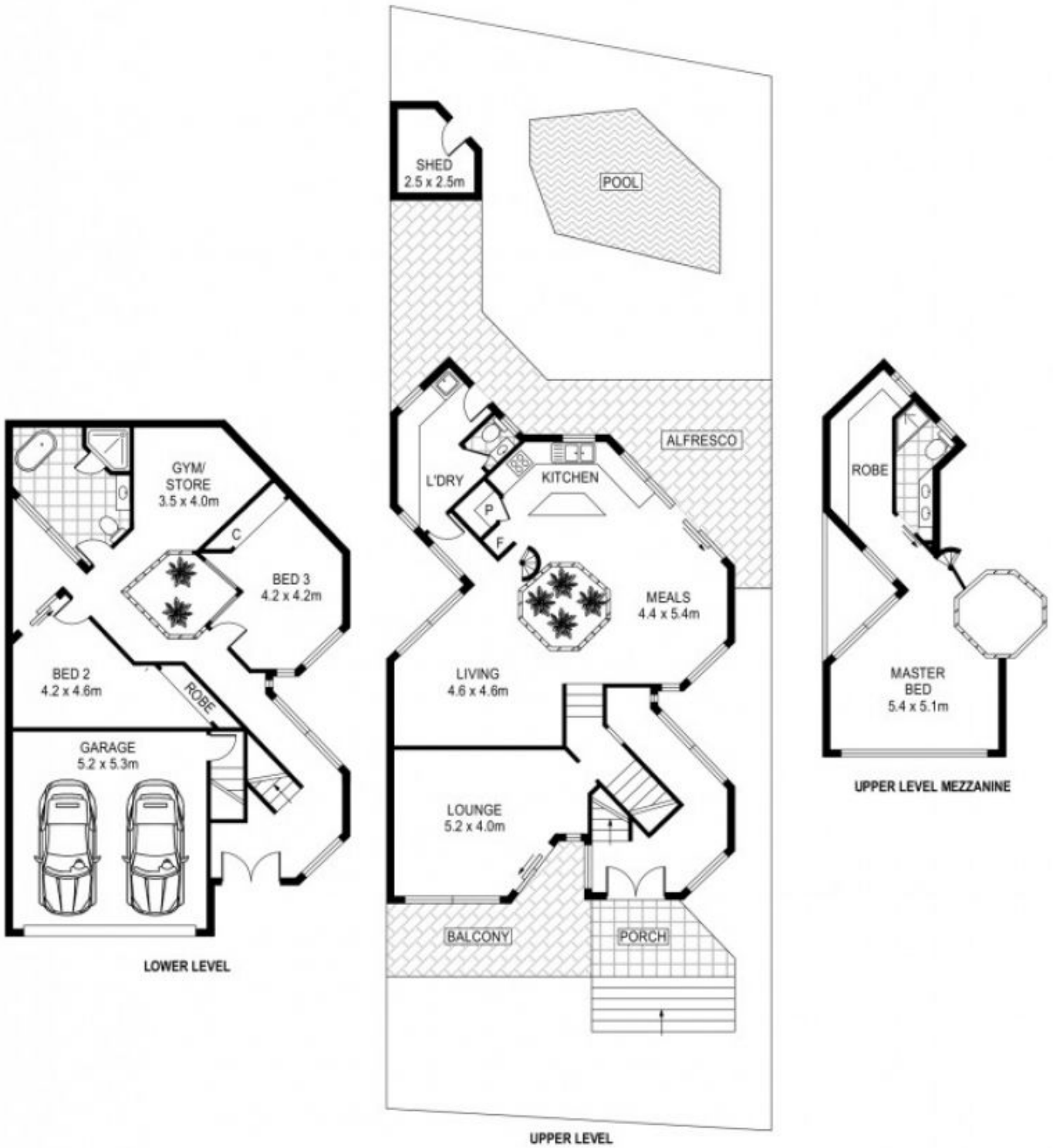
[For full version visit the website](https://www.schinellaproperty.com.au/6302177)

**Type** : House  
**Building Size** : 27 sqm  
**Land Size** : 350 sqm  
**View** : <https://www.schinellaproperty.com.au/6302177>



**Pat Schinella**  
08 8294 4484

<https://www.schinellaproperty.com.au>



Scale in metres. Indicative only. Dimensions are approximate. All information contained herein is gathered from sources we believe to be reliable. However we cannot guarantee its accuracy and interested persons should rely on their own enquiries

INT : 222m<sup>2</sup>  
GARAGE : 28m<sup>2</sup>

44 Cobbler Drive, Greenwith