

SCHINELLA.



14 Marine Parade Marino SA

5 🏠 2 🚗 2 🚗

Magnificent location! A seaside suburb made famous for its squid fishing, snorkelling, dolphin spotting & scenic coastal walking trails. Set on a highly sought after corner Esplanade position overlooking the ocean and coastline, this desirable residence has spectacular views from every angle.

Designed with elegance, this home seamlessly blends character features with contemporary living. Inviting steps lead to glass panelled front doors with lead light detailing. The bright entrance foyer features raked ceilings and sky light windows. With formal and informal areas, the formal dining room and lounge with cosy combustion fireplace, provide entry into the open plan living, kitchen and meals area. With neutral tones the kitchen is fitted with quality stainless steel appliances, gas cook top & dishwasher.

Type : House
Building Size : 335 sqm
Land Size : 800 sqm
View : <https://www.schinellaproperty.com.au/6302168>



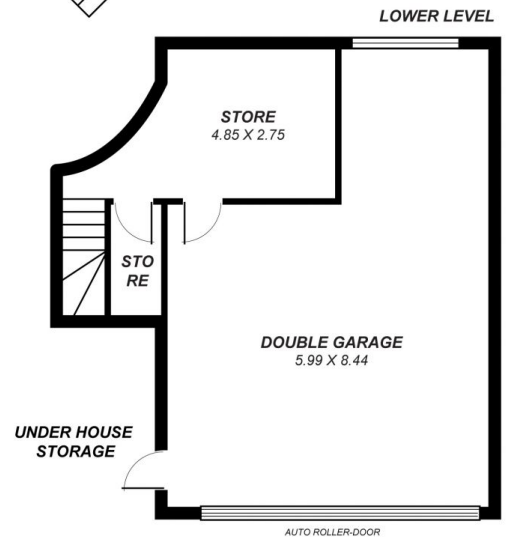
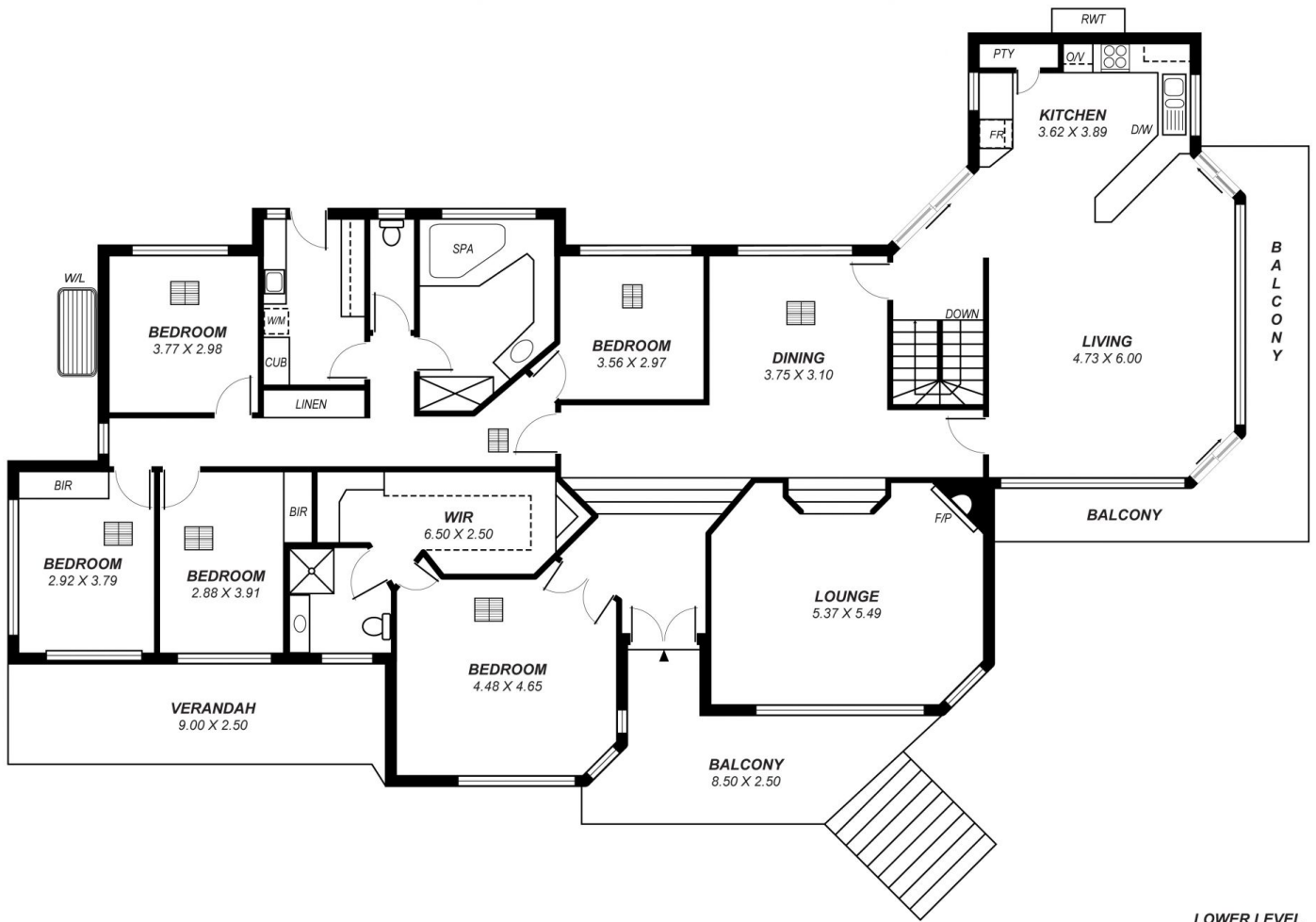
Pat Schinella
08 8294 4484



DeArna Schinella
08 8294 4484

[For full version visit the website](https://www.schinellaproperty.com.au)

<https://www.schinellaproperty.com.au>



Area	m ²
Living:	211.12
Verandah:	22.50
Garage:	50.56
Balcony:	50.18
Total:	334.35

*This drawing is for illustration purposes only .
All measurements are approximate and details intended
to be relied upon should be independently verified.*

AUTO ROLLER-DOOR