

SCHINELLA.



All measurements approx. Drawing is for illustration purposes only



13 Sandison Terrace GLENELG NORTH SA

4 1 3

Commanding corner position, this 1000sqm (approx.) allotment has street frontages of 27.6 metres (approx.) and 24.3 metres (approx.), offering keen developers, investors and renovators multiple options!

Situated in the highly sought after suburb of Glenelg North, walk to the tram, Patawalonga, beautiful beaches, and the restaurants and cafes offered on Jetty Road Glenelg. Only a short drive to the CBD!

The Opportunities:

1. Renovate and/or extend the existing property
2. Demolish the existing property and build your new family home

[For full version visit the website](https://www.schinellaproperty.com.au/6302164)

Type : House
Building Size : 18 sqm
Land Size : 1000 sqm
View : <https://www.schinellaproperty.com.au/6302164>



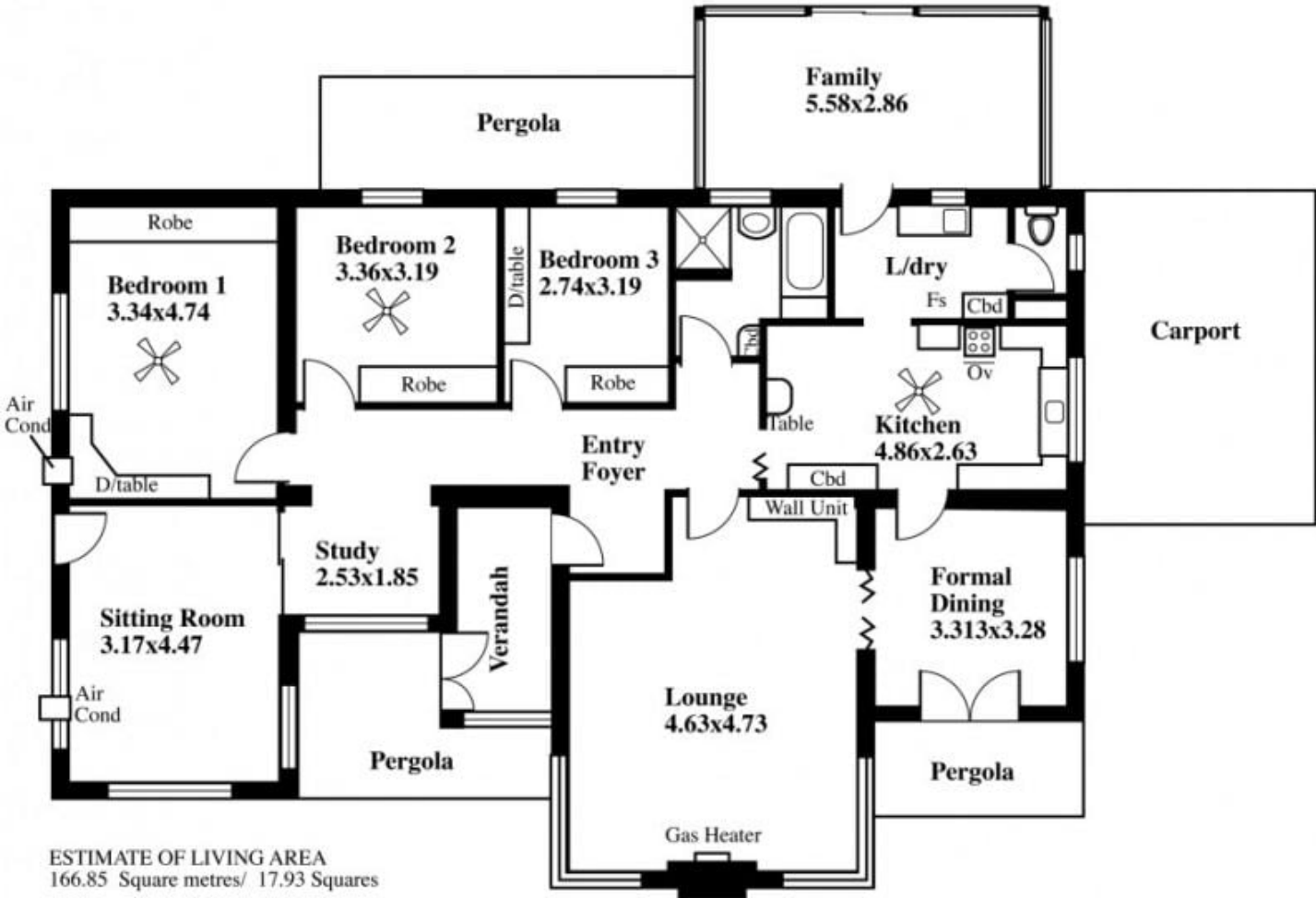
Pat Schinella
08 8294 4484

13 Sandison Terrace, Glenelg North

DISCLAIMER
 This drawing is AN ARTISTS IMPRESSION ONLY
 and is for ILLUSTRATION PURPOSES only
 (Drawing is not necessarily to scale)
 Every endeavour has been taken verify correct details.
 The drawing and the information contained is
 NOT intended to be part of any contract. All
 measurements are approximate and details intended
 to be relied upon should be independently verified.



**Double
Garage**



ESTIMATE OF LIVING AREA
 166.85 Square metres/ 17.93 Squares

Desk Top Image - (Y1015-75)