

SCHINELLA.



1 Jillian Court FULHAM GARDENS SA

3 2 2

Desirable cul-de-sac location in the tightly held onto suburb of Fulham Gardens, this updated and extended family residence has been designed to accommodate the perfect blend of living and entertaining areas.

Presenting with the latest trends and charming character features, this spacious home opens to a welcoming entrance hall with access through elegant glass doors into the spacious lounge and sitting room, featuring picture windows with stylish plantation shutters.

Adjacent this space is the updated kitchen and dining area that follows into the large light filled family room. The modern kitchen with trendy pendant lighting features stainless steel oven and cook top, handy double sink and

Type : House
Building Size : 19 sqm
Land Size : 550 sqm
View : <https://www.schinellaproperty.com.au/6302163>



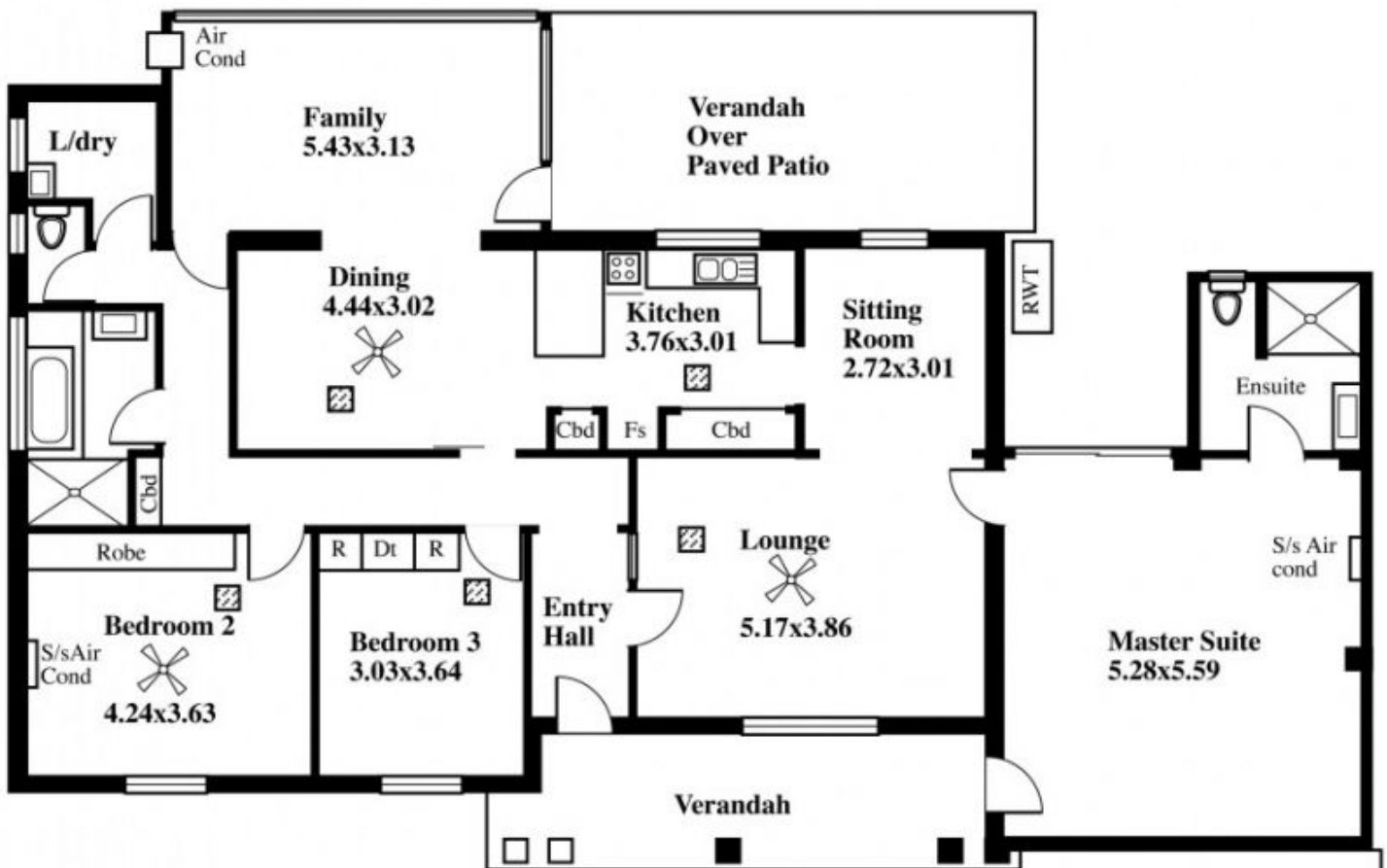
Pat Schinella
08 8294 4484

[For full version visit the website](https://www.schinellaproperty.com.au)

<https://www.schinellaproperty.com.au>


1 Jillian Court, Fulham Gardens

Garden Shed



Should you find this property interesting may we recommend you register your interest by leaving your name and contact telephone number with the Sales Consultant. We would be pleased to make every endeavour to contact you if the property is to be sold.

LEGEND

 Air cond ducts

Double Carport
5.28x6.42

DISCLAIMER

This drawing is AN ARTISTS IMPRESSION ONLY and is for ILLUSTRATION PURPOSES only (Drawing is not necessarily to scale)

Every endeavour has been taken verify correct details. The drawing and the information contained is NOT intended to be part of any contract. All measurements are approximate and details intended to be relied upon should be independently verified.

ESTIMATE OF LIVING AREA
176.41 Square metres/ 18.96 Squares

Desk Top Image - (Y1015-21)