

SCHINELLA.



12 Martin Avenue OSBORNE SA

3  1  2 

Want to break into the investment market? Here is the perfect opportunity!

Offering great rental return of (approx) 6%!

Recently updated and ready to move straight into! Freshly painted inside & out with brand new carpets throughout.

Featuring:

3 bedrooms

Spacious lounge room

Updated kitchen & casual meals

Attractive bathroom with new shower recess & separate W.C

Large laundry

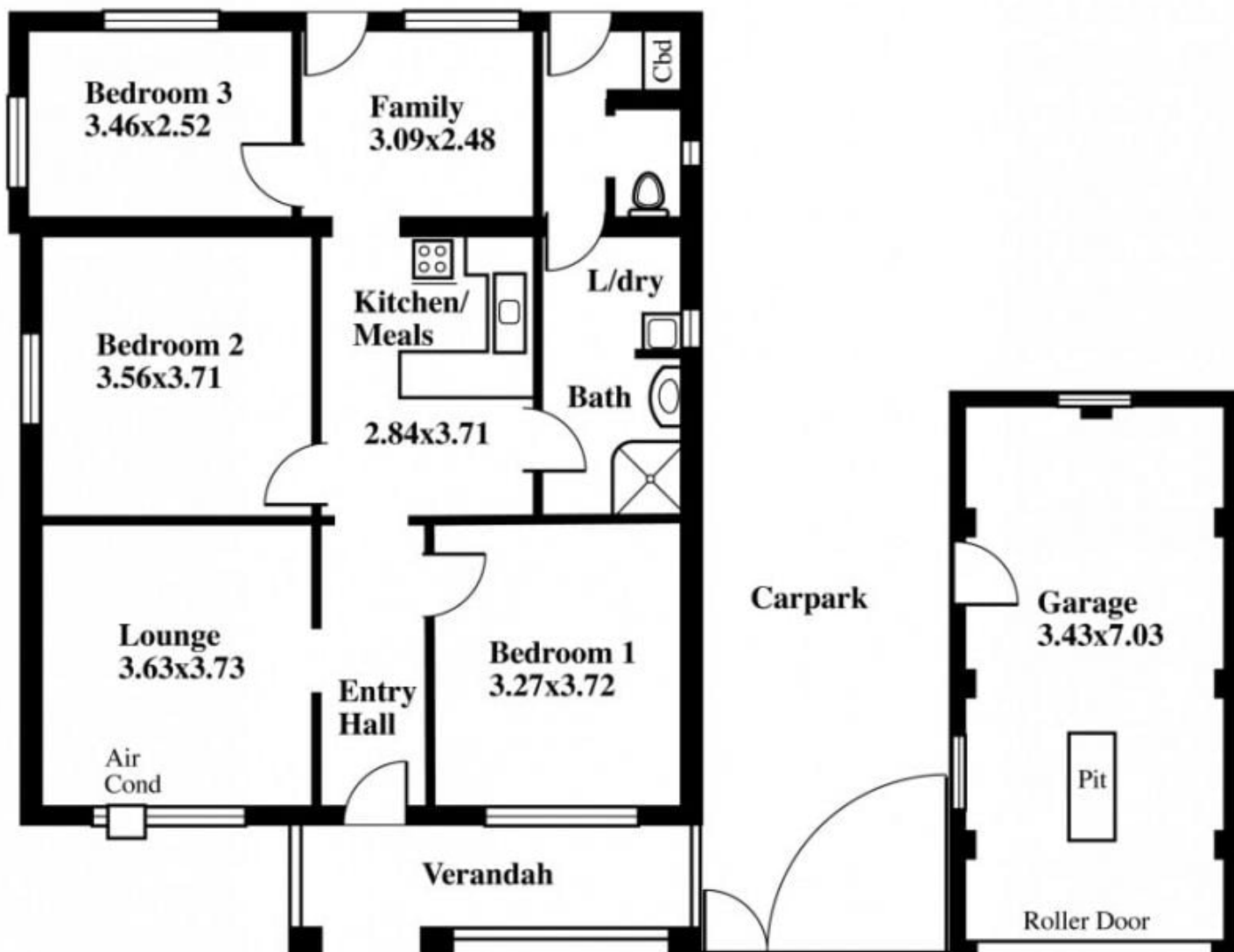
[For full version visit the website](https://www.schinellaproperty.com.au/6302158)

Type : House
Building Size : 13 sqm
Land Size : 808 sqm
View : <https://www.schinellaproperty.com.au/6302158>



Pat Schinella
08 8294 4484

12 Martin Avenue, Osborne



DISCLAIMER

This drawing is AN ARTISTS IMPRESSION ONLY
and is for ILLUSTRATION PURPOSES only
(Drawing is not necessarily to scale)

Every endeavour has been taken to verify correct details. The drawing and the information contained is NOT intended to be part of any contract. All measurements are approximate and details intended to be relied upon should be independently verified.

ESTIMATE OF AREA

HOUSE 94.38 Square metres/ 10.14 Squares

GARAGE 24.11 Square metres/ 2.59 Squares

TOTAL 118.49 Square metres/ 12.73 Squares

Desk Top Image - (Y0915-34)