

SCHINELLA.



9 Cappers Drive BROMPTON SA

3  2  2 

Brompton - Highly sought after locale, where character cottages have undergone major renovations and new housing developments have transformed this ideal city fringe suburb into one of Adelaide's residential hot spots!

Capturing a picturesque view, this contemporary townhouse is opposite 'The Central Reserve' in the City Edge Estate.

Offering the ultimate in style and sophistication, this spacious townhouse has been designed with clean modern lines and quality finishes throughout. The front door is accessed via a security intercom and high private fencing. Inside offers a welcoming entrance foyer which follows through to the open plan living and entertaining areas,

[For full version visit the website](https://www.schinellaproperty.com.au/6302157)

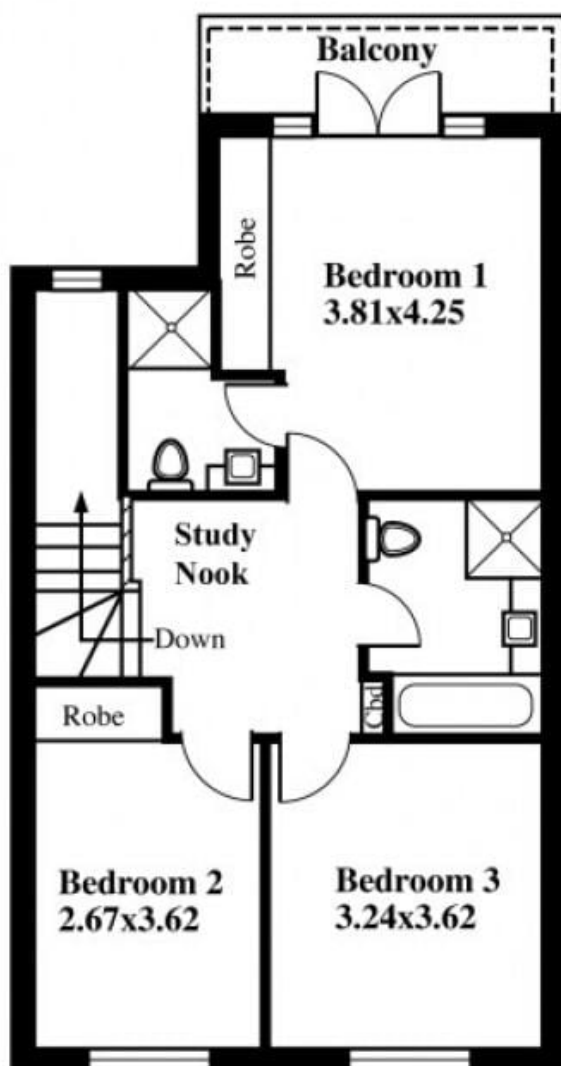
Type : Townhouse
Building Size : 18 sqm
Land Size : 159 sqm
View : <https://www.schinellaproperty.com.au/6302157>



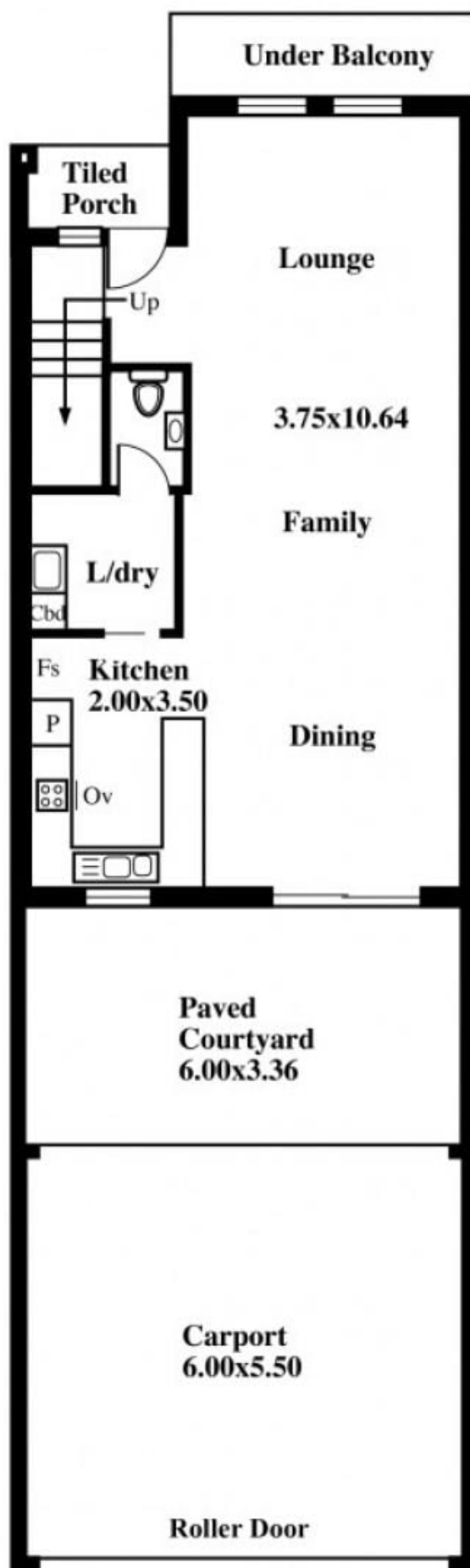
DeArna Schinella
08 8294 4484

9 Cappers Drive, Brompton

UPSTAIRS



GROUND FLOOR



This drawing is for illustration purposes only
(Drawing is not to scale)

The drawing and the information contained is not intended to be part of any contract. All measurements are approximate and details intended to be relied upon should be independently verified.

ESTIMATE OF AREA

GROUND FLOOR 67.36 Square metres/ 7.24 Squares
UPSTAIRS 67.36 Square metres/ 7.24 Squares
CARPORT 33.00 Square metres/ 3.54 Squares

TOTAL 167.72 Square metres/ 18.02 Squares