

SCHINELLA.



74 Bowker Street SOMERTON PARK SA

3  2  2 

Stylish finishing and design flair are standout elements of this impressive renovated home. A would-be winner on any 'block' - this property is worthy of a glossy magazine cover.

Beautifully landscaped front yard, complete with stone pathway centred around a established tree, leads to the front portico and timber deck. The entrance hall has modern pendant lighting and stained timber floors with high ceilings, attractive features that flow throughout this contemporary styled home.

Adjacent to the entry is the spacious lounge room with large picture windows, gas log heater and timber detailing complete with modern shelving. The lounge area flows into the on-trend kitchen and dining area, that has been custom

[For full version visit the website](https://www.schinellaproperty.com.au/6302147)

Type : House
Building Size : 14 sqm
Land Size : 591 sqm
View : <https://www.schinellaproperty.com.au/6302147>



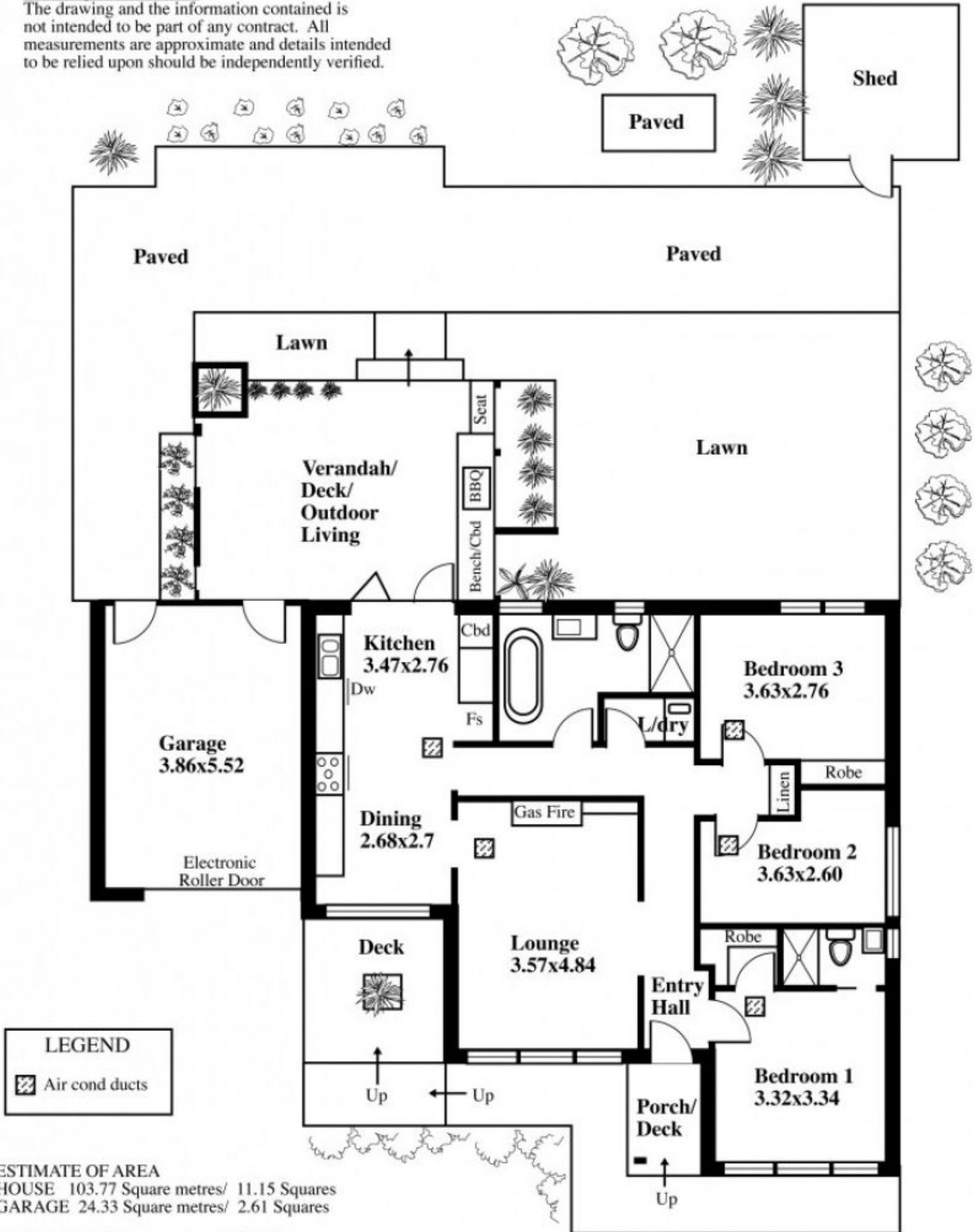
Pat Schinella
08 8294 4484

<https://www.schinellaproperty.com.au>

74 Bowker Street, Somerton Park

This drawing is for illustration purposes only
(Drawing is not to scale)

The drawing and the information contained is not intended to be part of any contract. All measurements are approximate and details intended to be relied upon should be independently verified.



LEGEND

▨ Air cond ducts

ESTIMATE OF AREA
 HOUSE 103.77 Square metres/ 11.15 Squares
 GARAGE 24.33 Square metres/ 2.61 Squares
TOTAL 128.10 Square metres/ 13.76 Squares