

# SCHINELLA.



## 2A John Street SEACLIFF PARK SA

3  2  2 

Privately located off the street, this secure home presents with an attractive rendered exterior, architecturally designed to capture the desires of modern living.

Inviting entry flows through to the spacious open plan kitchen, dining and living area. This area features large glass sliding doors that open out onto the real attraction of this well-appointed home, the large undercover entertaining area - enabling the perfect combination of indoor and outdoor living.

Complimenting this outdoor space is the relaxing garden retreat, surrounded by attractive landscaped grounds.

The modern kitchen, designed with clean lines, features quality stainless steel appliances, integrated dishwasher

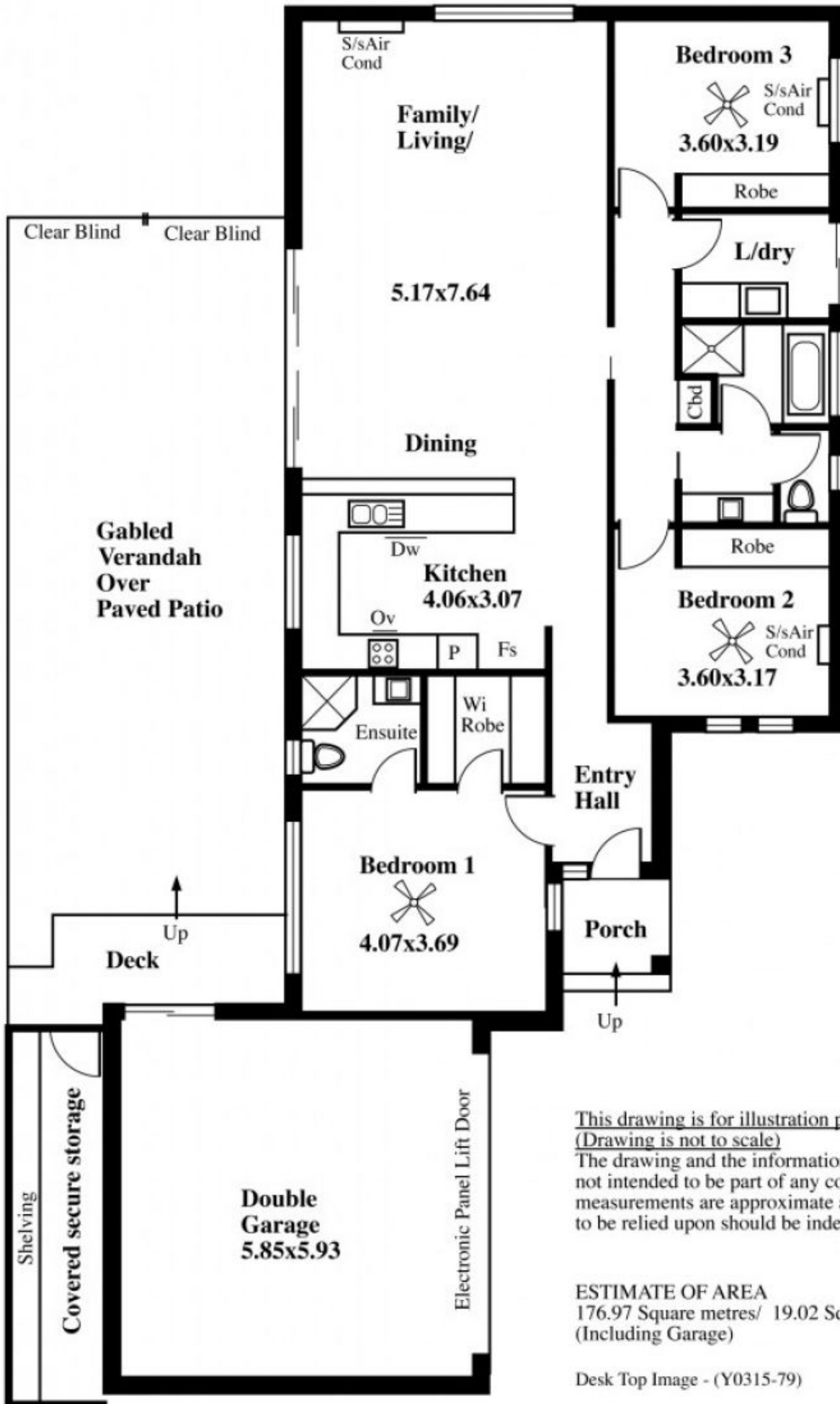
[For full version visit the website](https://www.schinellaproperty.com.au/6302146)

**Type** : House  
**Building Size** : 19 sqm  
**Land Size** : 392 sqm  
**View** : <https://www.schinellaproperty.com.au/6302146>



**Pat Schinella**  
08 8294 4484

# 2a John Street, Seacliff Park



This drawing is for illustration purposes only  
(Drawing is not to scale)  
 The drawing and the information contained is not intended to be part of any contract. All measurements are approximate and details intended to be relied upon should be independently verified.

ESTIMATE OF AREA  
 176.97 Square metres/ 19.02 Squares  
 (Including Garage)

Desk Top Image - (Y0315-79)