

SCHINELLA.



56 Bower Road SEMAPHORE PARK SA

4 1 4

Located in this popular seaside location, walking distance to the beach and close to bustling Semaphore Road - an area infused with old world charm and contemporary conveniences, modern boutiques and funky cafes & restaurants.

Set behind high brush fencing, this stone fronted home encapsulates character features. Glass double doors open into a wide entrance hall that flows to the kitchen and dining area featuring decorative ceiling rose with elegant light fitting and fireplace. The kitchen includes gas cook top.

At the rear of the home, the large family room with combustion heater opens to the verandah and paved patio

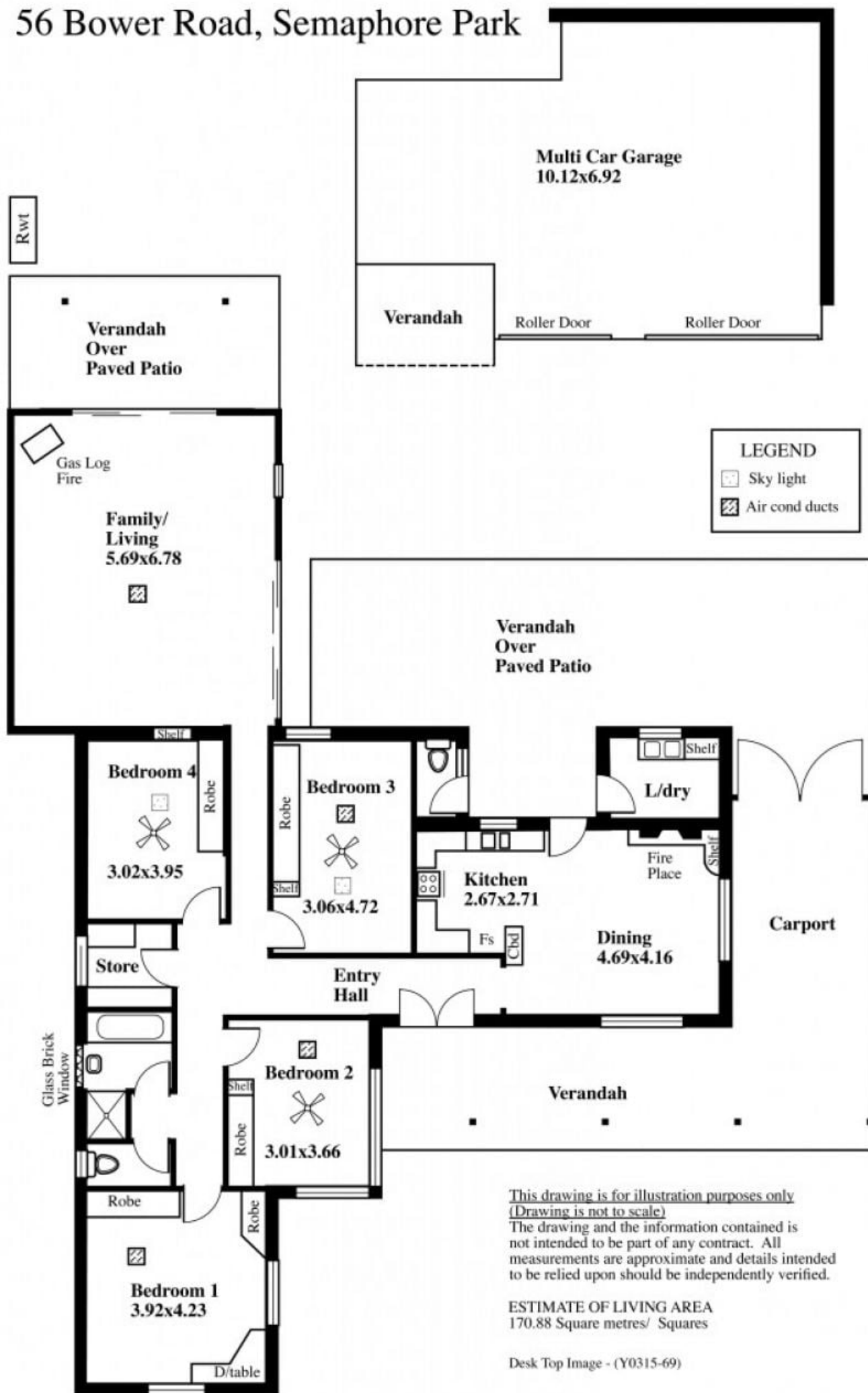
[For full version visit the website](https://www.schinellaproperty.com.au/6302145)

Type : House
Building Size : 18 sqm
Land Size : 696 sqm
View : <https://www.schinellaproperty.com.au/6302145>





DeArna Schinella
08 8294 4484

56 Bower Road, Semaphore Park



LEGEND

-  Sky light
-  Air cond ducts

This drawing is for illustration purposes only
(Drawing is not to scale)
 The drawing and the information contained is not intended to be part of any contract. All measurements are approximate and details intended to be relied upon should be independently verified.

ESTIMATE OF LIVING AREA
 170.88 Square metres/ Squares

Desk Top Image - (Y0315-69)