

SCHINELLA.



37 Waterfall Gully Road BEAUMONT SA

4 🚗 2 🚗 4 🚗

Encapsulating elegance and charm with its character stone features, this superb residence has been tastefully renovated, fusing classic character with contemporary style.

Overlooking landscaped grounds spanning approximately 1,950 sqm, this home is positioned in a tranquil leafy setting, with views of the hills. The natural spring water creek and pond running through this property are desirable features that complete the picturesque grounds.

Behind original stone fencing is a pebbled pathway that leads to the footbridge and the grand entrance of this home. The attractive rendered facade features a spacious tiled portico and verandah area overlooking the swimming

[For full version visit the website](https://www.schinellaproperty.com.au/6302142)

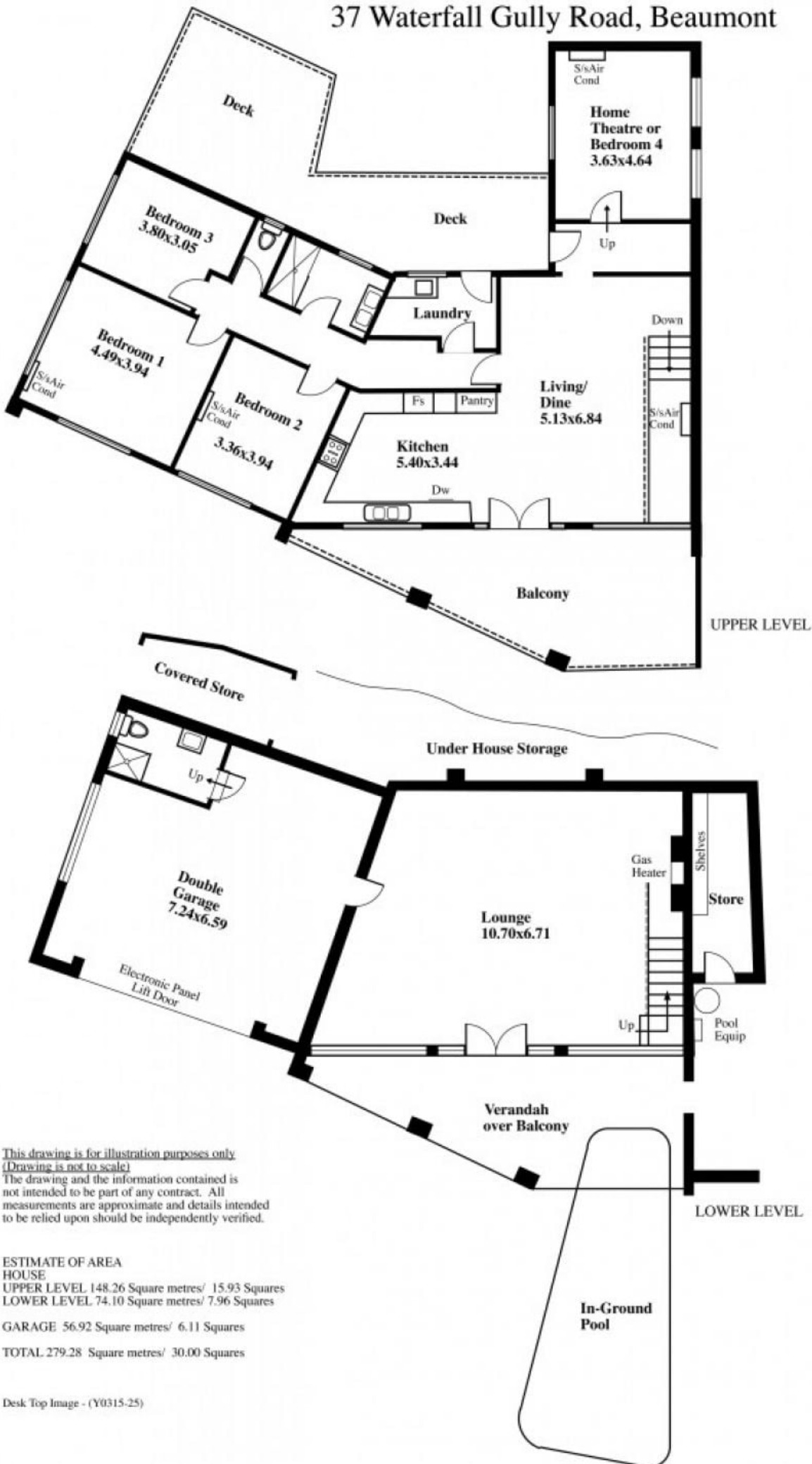
Type : House
Building Size : 30 sqm
Land Size : 1975 sqm
View : <https://www.schinellaproperty.com.au/6302142>



Pat Schinella
08 8294 4484

<https://www.schinellaproperty.com.au>

37 Waterfall Gully Road, Beaumont



*This drawing is for illustration purposes only
(Drawing is not to scale)
The drawing and the information contained is
not intended to be part of any contract. All
measurements are approximate and details intended
to be relied upon should be independently verified.*

ESTIMATE OF AREA
HOUSE
UPPER LEVEL 148.26 Square metres/ 15.93 Squares
LOWER LEVEL 74.10 Square metres/ 7.96 Squares
GARAGE 56.92 Square metres/ 6.11 Squares
TOTAL 279.28 Square metres/ 30.00 Squares