




SCHINELLA.



25 Seacombe Road STURT SA

4  3  4 

Set back from the street is this attractive sandstone fronted villa, with great street appeal! Immaculately presented and designed with a flexible floor plan of formal and informal living and entertaining areas, this residence will appeal to growing families and families looking to accommodate extended family members.

Type : House
Building Size : 24 sqm
Land Size : 813 sqm
View : <https://www.schinellaproperty.com.au/6302139>

The tree lined driveway leads the way to the elegant front door featuring exquisite lead light glass panelling. Inside offers a welcoming entrance hall featuring gloss tiled flooring and double doors opening to the spacious formal lounge room. Adjacent the entry hall is the master bedroom that includes a walk in robe, ensuite and large bay window drawing in the view of the front landscaped garden.



Pat Schinella
08 8294 4484

[For full version visit the website](https://www.schinellaproperty.com.au)

<https://www.schinellaproperty.com.au>

25 Seacombe Road, Sturt

This drawing is for illustration purposes only
(Drawing is not to scale)

The drawing and the information contained is not intended to be part of any contract. All measurements are approximate and details intended to be relied upon should be independently verified.

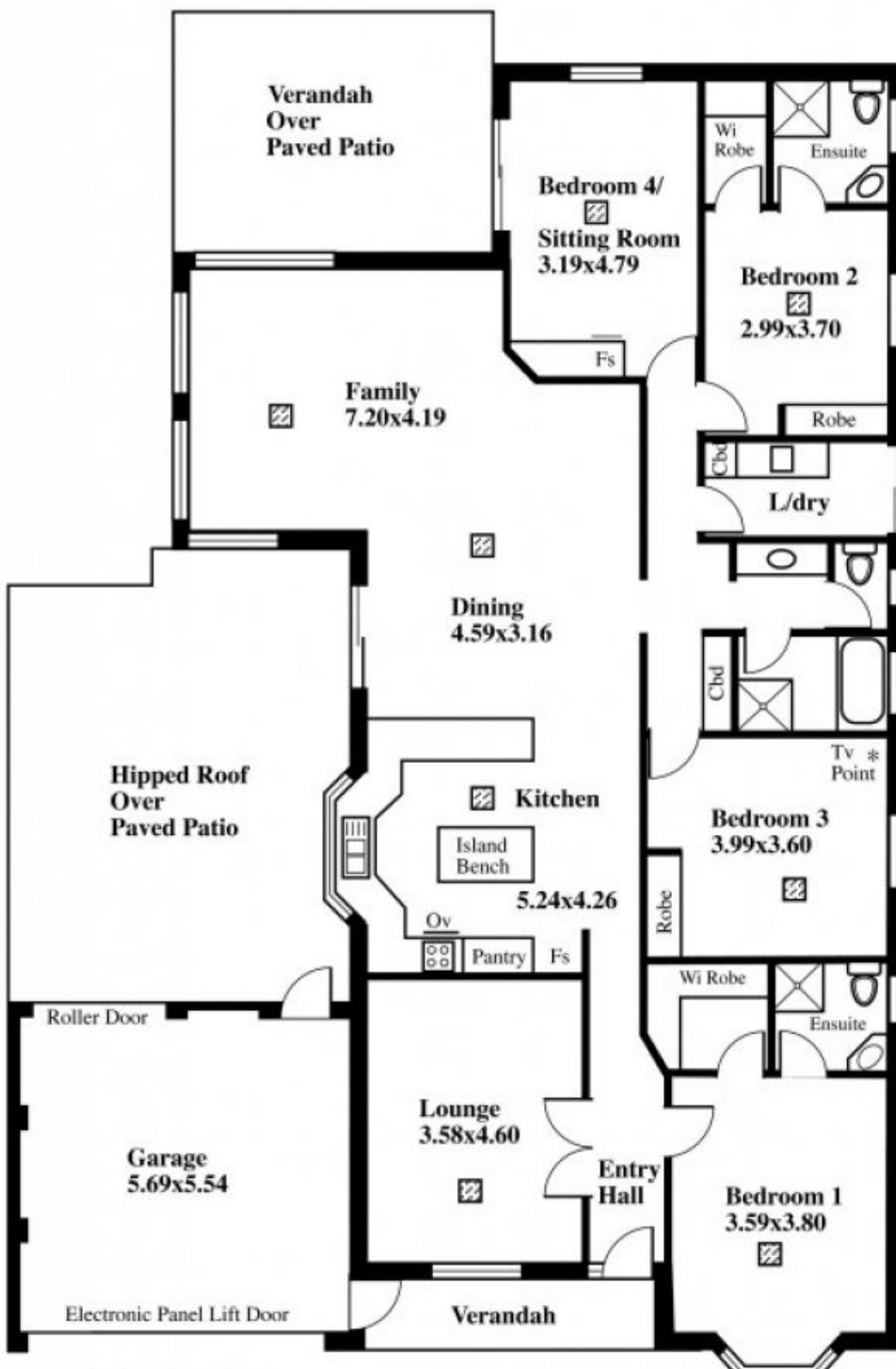
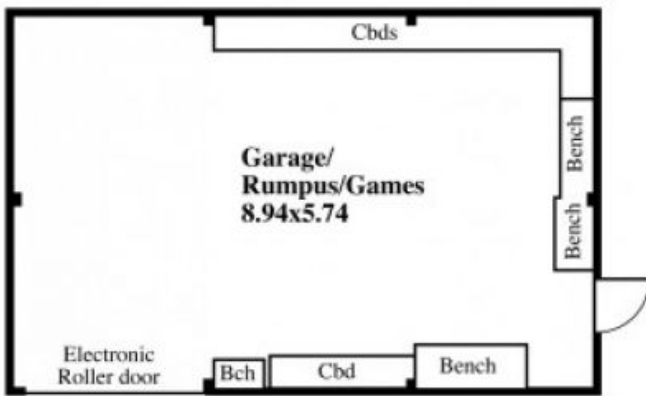
ESTIMATE OF AREA

HOUSE 190.16 Square metres/ 20.44 Squares


GARAGE 31.52 Square metres/ 3.38 Squares

RUMPUS 51.31 Square metres/ 5.51 Squares

TOTAL 272.99 Square metres/ 29.33 Squares



LEGEND

 Air cond ducts