

# SCHINELLA.



**494 Seaview Road HENLEY BEACH SA**

4 3 3

Class and style are the words that come to mind when walking through this stunning residence. This luxurious home has incorporated multiple living and entertaining areas across two levels.

Architecturally designed to capture the outstanding sea, city and foothill views on offer, this fine home is positioned in an outstanding location.

In the desirable seaside suburb of Henley Beach, on highly sought after Seaview Road, just a street from the beach. Offering the ultimate lifestyle of pleasure and luxury, stroll to the cafe and restaurant precinct at Henley Square, and enjoy sunsets on the beach.

Presenting with a striking Mediterranean appearance, this

[For full version visit the website](https://www.schinellaproperty.com.au/6302133)

**Type** : House  
**Building Size** : 40 sqm  
**Land Size** : 415 sqm  
**View** : <https://www.schinellaproperty.com.au/6302133>

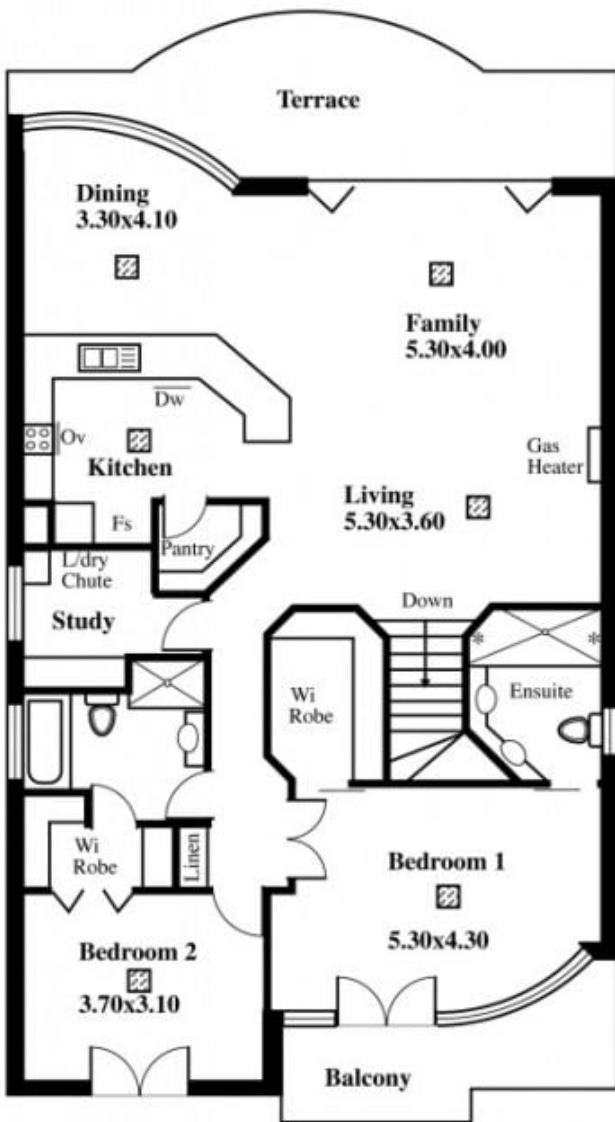


**Pat Schinella**  
**08 8294 4484**

<https://www.schinellaproperty.com.au>

# 494 Seaview Road, Henley Beach

**LEGEND**  
 Air cond ducts



**APPROXIMATE ESTIMATE OF AREA HOUSE**

UPPER LEVEL 143.04 Square metres/ 15.37 Squares  
 BALCONY 8.65 Square metres/ 0.92 Squares  
 TERRACE 18.51 Square metres/ 1.98 Squares

LOWER LEVEL 117.20 Square metres/ 12.59 Squares  
 GARAGE 58.36 Square metres/ 6.27 Squares  
 TERRACE 18.51 Square metres/ 1.98 Squares  
 PORCH 3.97 Square metres/ 0.42 Squares

TOTAL 368.24 Square metres/ 39.53 Squares

This drawing is for illustration purposes only  
 (Drawing is not to scale)  
 The drawing and the information contained is not intended to be part of any contract. All measurements are approximate and details intended to be relied upon should be independently verified.