

SCHINELLA.



261 O'Sullivan Beach Road MORPHETT VALE SA

3 1 2

Set behind high private fencing, this solid brick home is located on a large allotment, offering families huge potential at an affordable price!

Inside comprises of a spacious lounge room and dining area with gas heating and split system, neat kitchen, and three double sized bedrooms, the master and second bedroom include built in robes. The well-kept bathroom features a bath, shower recess and separate toilet.

Outside has a large under cover entertaining and BBQ area, detached rumpus room with built in bar, cooling and tiled spa!

This home includes spacious shed and secure garage with

[For full version visit the website](https://www.schinellaproperty.com.au/6302124)

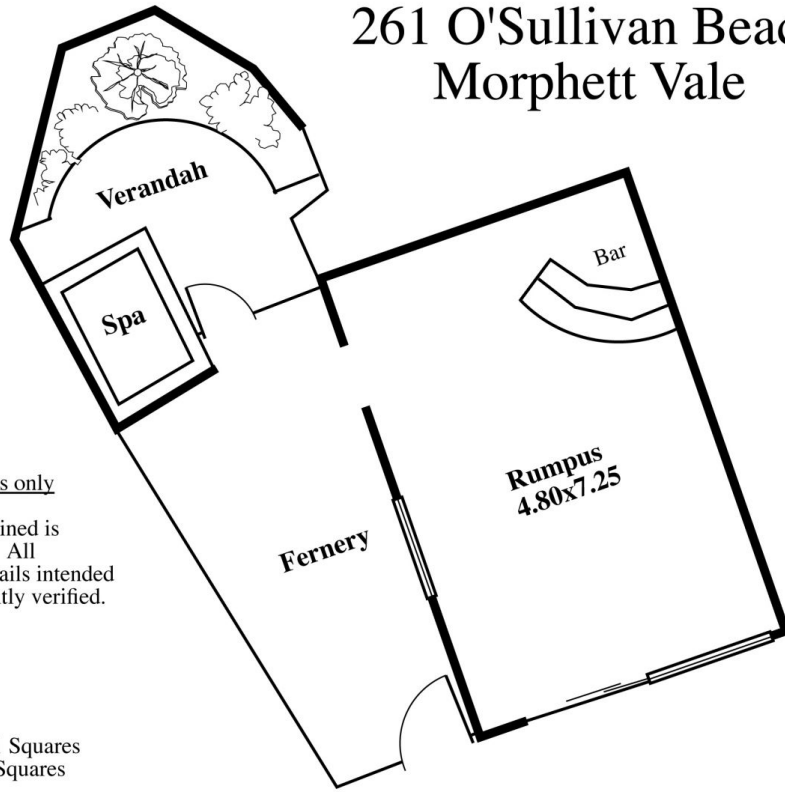
Type : House
Building Size : 16 sqm
Land Size : 732 sqm
View : <https://www.schinellaproperty.com.au/6302124>



DeArna Schinella
08 8294 4484

<https://www.schinellaproperty.com.au>

261 O'Sullivan Beach Road, Morphett Vale



This drawing is for illustration purposes only
(Drawing is not to scale)

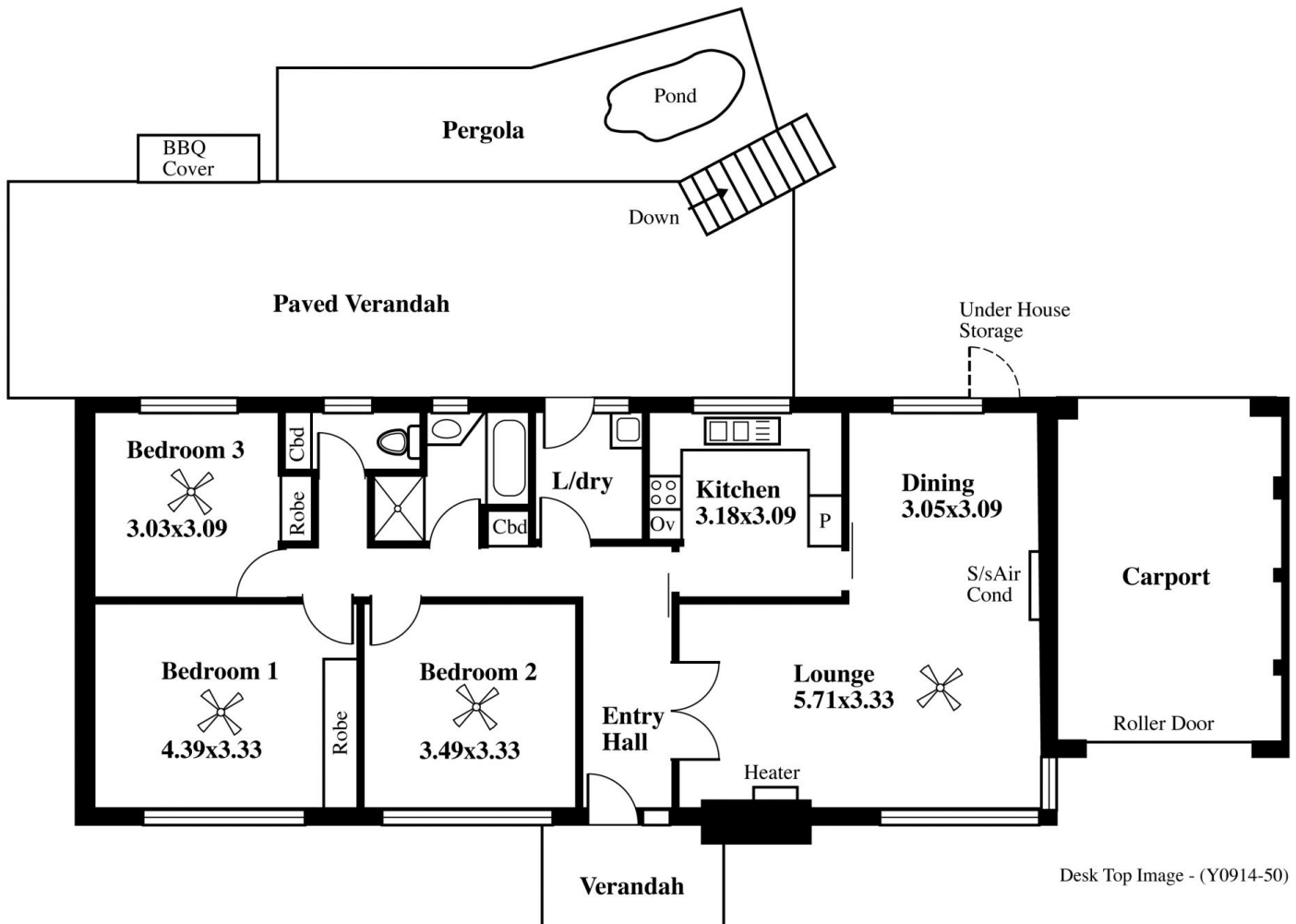
The drawing and the information contained is not intended to be part of any contract. All measurements are approximate and details intended to be relied upon should be independently verified.

ESTIMATE OF AREA

HOUSE 111.77 Square metres/ 12.01 Squares

RUMPUS 34.80 Square metres/ 3.74 Squares

TOTAL 146.57 Square metres/ 15.75 Squares



Desk Top Image - (Y0914-50)