

SCHINELLA.



3 Tennant Street GLENELG EAST SA

4 1 2

This classic stone fronted bungalow has retained its glorious character features of its era. Its high ornate ceilings and timber floors have been restored and upgraded to become pleasant features of this attractive residence.

Situated in the highly sort after seaside suburb of Glenelg East, near the ambience offered by vibrant Jetty Road, Glenelg shops, cafes, restaurants and convenient public transport.

Designed to accommodate the lifestyles of families, this home features a tiled entrance into a quaint glassed sunroom that provides access onto the main hallway which leads down to the spacious updated kitchen and dining

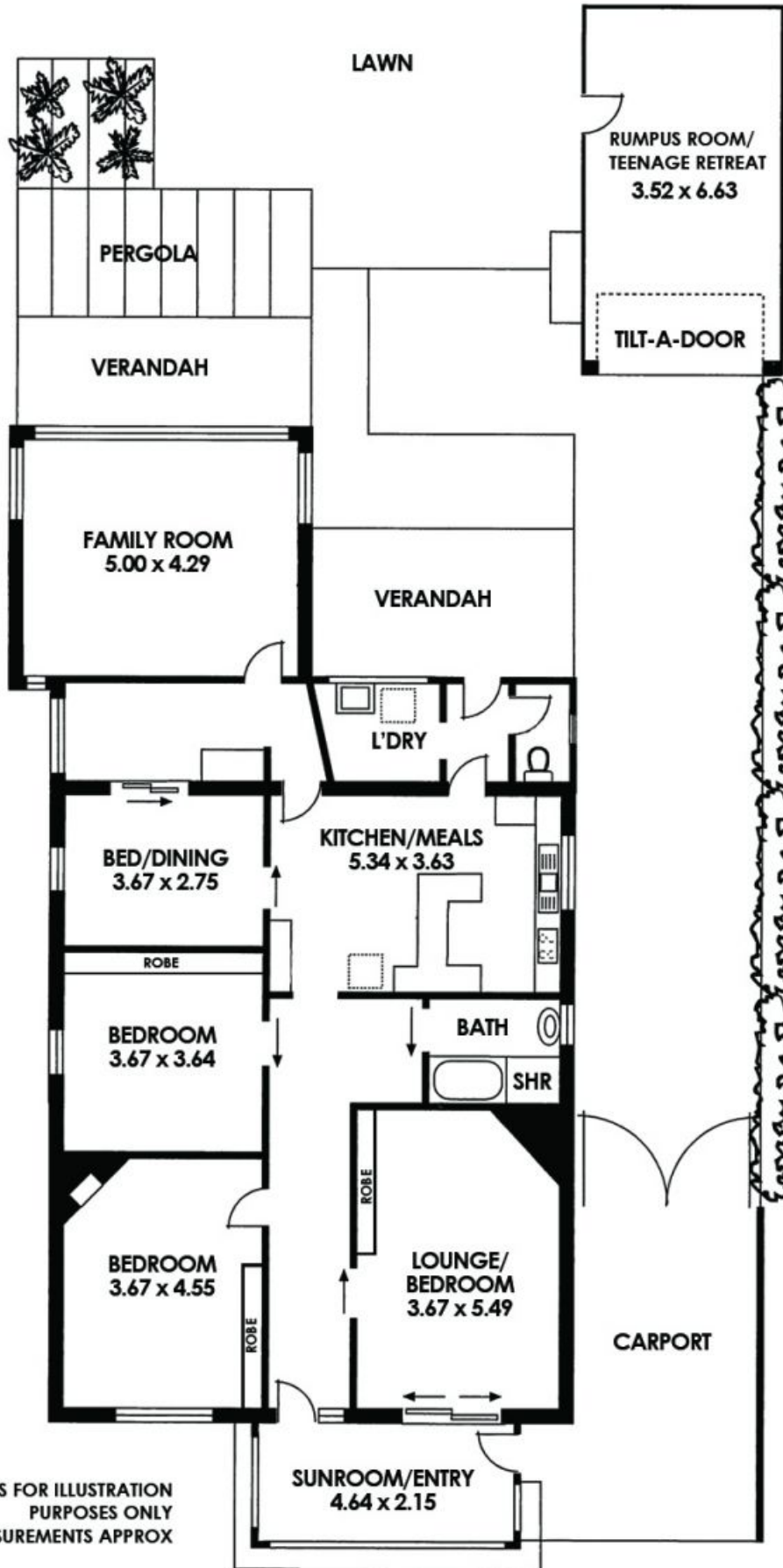
[For full version visit the website](https://www.schinellaproperty.com.au/6302121)

Type : House
Building Size : 20 sqm
Land Size : 720 sqm
View : <https://www.schinellaproperty.com.au/6302121>



Pat Schinella
08 8294 4484

3 TENNANT STREET GLENELG EAST



DRAWING IS FOR ILLUSTRATION
PURPOSES ONLY
ALL MEASUREMENTS APPROX

LIVING:186 sqm (Approx)