

SCHINELLA.



24 Greenfield Road SEAVIEW DOWNS SA

5 🛏 3 🚿 3 🚗

Positioned on the high side of the street, designed to capture the great ocean views on offer, this striking residence has been tastefully renovated throughout.

Inside provides a flexible floor plan with unique set up options. The inviting tiled entrance foyer provides access through to extensive downstairs living. This area includes a spacious lounge room, bedroom with built in robe and large bathroom facilities. The bonus feature of this area is that it has its own private access, making this space ideal as a teenagers or grandparents retreat, or simply can be the perfect home theatre room. This part of the home also features a paved floor cellar.

Type : House
Building Size : 29 sqm
Land Size : 600 sqm
View : <https://www.schinellaproperty.com.au/6302110>

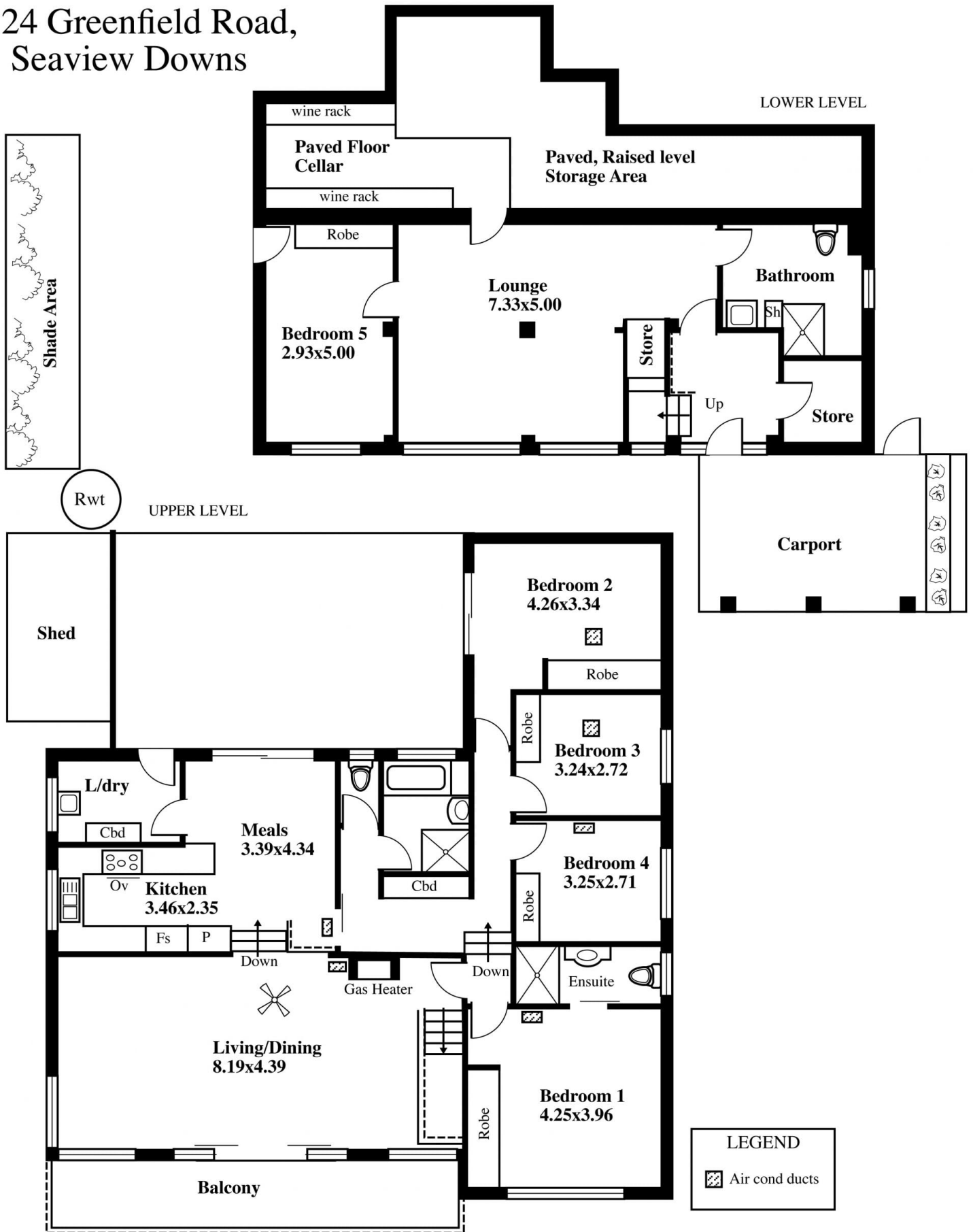


Pat Schinella
08 8294 4484

[For full version visit the website](https://www.schinellaproperty.com.au)

<https://www.schinellaproperty.com.au>

24 Greenfield Road, Seaview Downs



ESTIMATE OF AREA
HOUSE
UPPER LEVEL 156.67 Square metres/ 16.84 Squares
LOWER LEVEL 117.65 Square metres/ 12.64 Squares

TOTAL 274.32 Square metres/ 29.48 Squares

Desk Top Image - (Y0414-96)

This drawing is for illustration purposes only
(Drawing is not to scale)

The drawing and the information contained is not intended to be part of any contract. All measurements are approximate and details intended to be relied upon should be independently verified.