

SCHINELLA.



483 Goodwood Road COLONEL LIGHT GARDENS SA

2 1 5

Located behind private brush fencing is a classic bungalow - maisonette that has been completely renovated to perfection. This stunning home seamlessly blends the character and charm of it's 1926 era with contemporary style to create the ultimate in sophisticated living.

This home opens into a stylish entrance hall with high ornate ceilings and striking polished jarrah floorboards. The entrance flows through to the open plan living area. The spacious elegant lounge features a charming open fireplace that separates the modern kitchen and dining area.

The sleek, bright kitchen has been designed to be the real

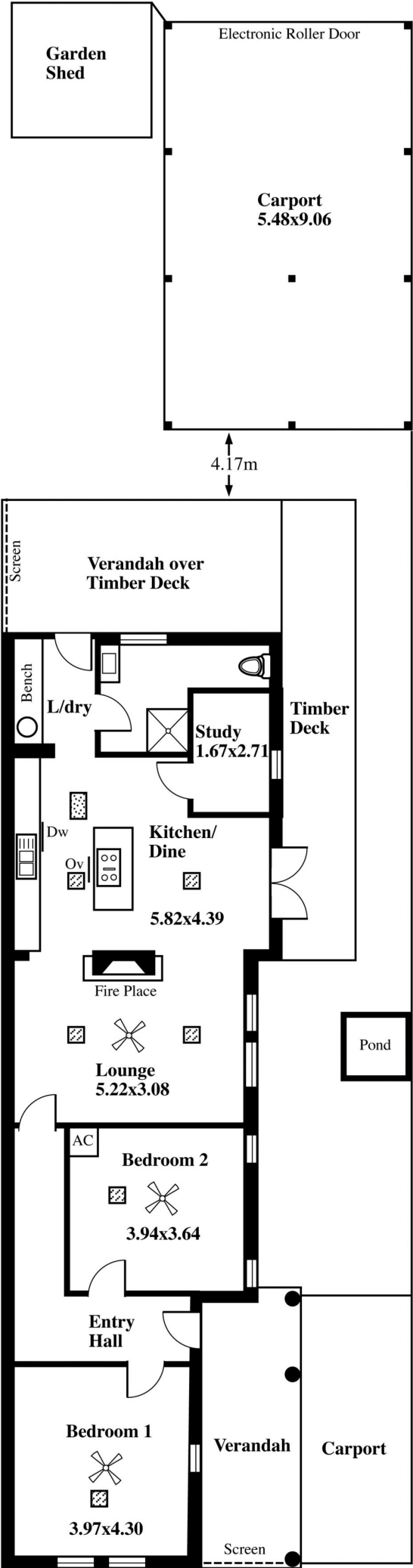
[For full version visit the website](https://www.schinellaproperty.com.au)

Type : House
Building Size : 12 sqm
Land Size : 440 sqm
View : <https://www.schinellaproperty.com.au/6302108>



Pat Schinella
08 8294 4484

483 Goodwood Road, Colonel Light Gardens



LEGEND

▣ Air cond ducts

This drawing is for illustration purposes only
(Drawing is not to scale)
 The drawing and the information contained is not intended to be part of any contract. All measurements are approximate and details intended to be relied upon should be independently verified.

ESTIMATE OF LIVING AREA ONLY
 114.91 Square metres/ 12.35 Squares

Desk Top Image - (Y0414-69)