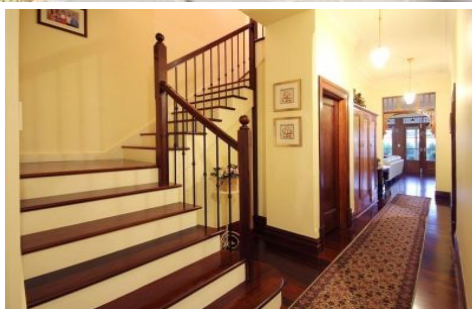


SCHINELLA.



3 Wilkinson Avenue SOMERTON PARK SA

4 🚗 4 🚗 5 🚗

Capturing the elegance and charm of its 1935 era, this conventional styled home has been completely renovated, restored and extended to the absolute highest level.

Designed to balance contemporary living with its glorious character features, this stunning home has the perfect blend of formal and informal living and entertaining areas.

Bold brick pillars with wrought iron fencing, featuring automatic electric gates and video intercom, highlight the entrance into this home's beautifully established and landscaped grounds.

Inside comprises a spacious entrance foyer showcasing the superb jarrah timber staircase and wrought iron

[For full version visit the website](https://www.schinellaproperty.com.au/6302102)

Type : House
Building Size : 40 sqm
Land Size : 925 sqm
View : <https://www.schinellaproperty.com.au/6302102>



Pat Schinella
08 8294 4484

<https://www.schinellaproperty.com.au>

