

SCHINELLA.



83 Braeside Avenue SEACOMBE HEIGHTS SA

4  4  3 

Pure elegance, luxury and style are the words that come to mind when walking through this stunning property.

Schinellas First National has the pleasure of showcasing one of Adelaide's finest homes. Located in renowned Braeside Avenue of Seacombe Heights, this superb 3 level home has been architecturally designed to capture the amazing coastal, city and hill views on offer.

Entry into this striking, modern residence is via private electronic gates onto paved steps guided by a glass balustrade leading up to the large double wooden oak doors with chrome detailing.

The front doors open onto the spacious light filled entrance,

[For full version visit the website](https://www.schinellaproperty.com.au/6302097)

Type : House
Building Size : 46 sqm
Land Size : 800 sqm
View : <https://www.schinellaproperty.com.au/6302097>



Pat Schinella
08 8294 4484

<https://www.schinellaproperty.com.au>

83 Braeside Avenue, Seacombe Heights

*This drawing is for illustration purposes only
(Drawing is not to scale)*

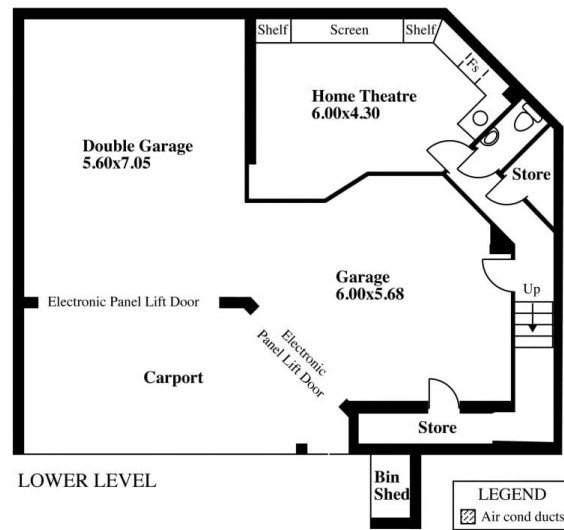
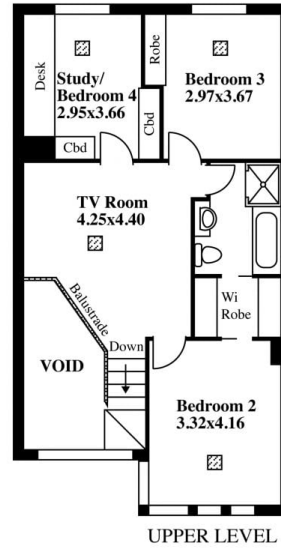
The drawing and the information contained is not intended to be part of any contract. All measurements are approximate and details intended to be relied upon should be independently verified.

ESTIMATE OF AREA
 LOWER LEVEL 125.99 Square metres/ 13.54 Squares
 MIDDLE LEVEL 212.40 Square metres/ 22.83 Squares
 UPPER LEVEL 84.23 Square metres/ 9.05 Squares

SUB-TOTAL 422.62 Square metres/ 45.43 Squares

OUTDOOR UNDERCOVER AREA
 78.44 Square metres/ 8.43 Squares
 VERANDAHS AND BALCONIES
 100.37 Square metres/ 10.78 Squares

TOTAL 601.43 Square metres/ 64.65 Squares



Desk Top Image (V1113-10)

