

# SCHINELLA.



## 22 Lydia Street PLYMPTON SA

2  1 

Perfectly positioned between the City and Bay, this home has been beautifully maintained and looked after. Offering neutral colours and decorative ornate ceilings throughout, this home comprises 2 spacious bedrooms, both with ceiling fans, a large living room with feature built in gas heating, updated kitchen and spacious dining area.

This home also features a renovated bathroom, 2 toilets, separate laundry and a secure back garden with a small undercover entertaining area with cafe blinds and garden shed.

Great opportunity to add this property to your current rental portfolio in popular location or live in and enjoy, the choice is yours! Located within walking distance to shops and

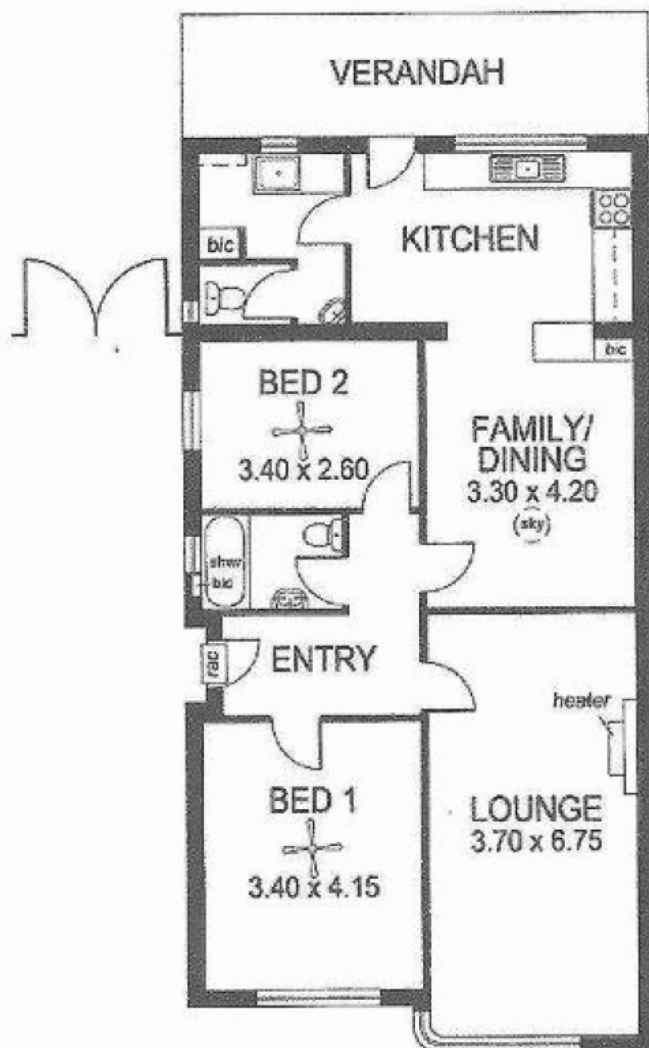
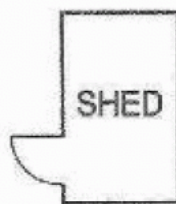
**Type** : House  
**Land Size** : 439 sqm  
**View** : <https://www.schinellaproperty.com.au/63020>  
90



**Pat Schinella**  
08 8294 4484

[For full version visit the website](https://www.schinellaproperty.com.au)

<https://www.schinellaproperty.com.au>



TOTAL AREA:	119.18m <sup>2</sup> /12.81sqs
(Estimate only)	(incl. verandah)

This drawing is for illustration purposes only.  
 All measurements are approximate only and information  
 intended to be relied upon should be independently verified.