

SCHINELLA.



11 Hampton Drive OAKDEN SA

3  1  1 

This charming blue stone villa style home offers an attractive low maintenance life style. It is located in a beautiful tree lined street within walking distance to Sir Ross Smith Drive, with its lively family parks and cafes.

It comprises 3 bedrooms, the master with bay window, walk in robe and access to the two way bathroom. A spacious open plan kitchen, dining and living area also with bay window, has easy to care for tiled flooring and abundant cupboard and bench space. The sliding glass doors open to a private rear court yard garden and the single car garage offers secure parking and access to the hall way close to the entrance.

This well presented home has much appeal and is well

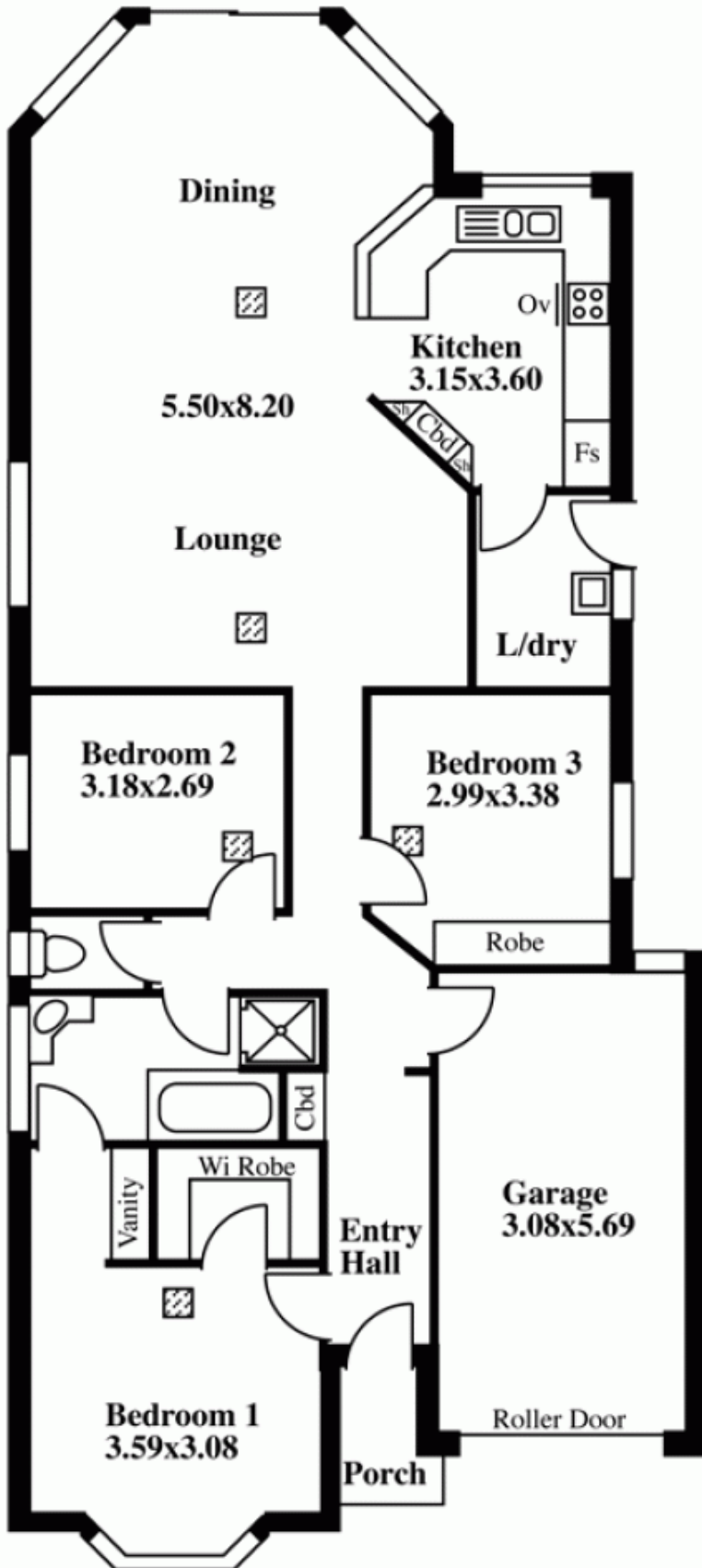
[For full version visit the website](https://www.schinellaproperty.com.au/6302071)

Type : House
Building Size : 15 sqm
Land Size : 360 sqm
View : <https://www.schinellaproperty.com.au/6302071>

<https://www.schinellaproperty.com.au>

Paved
Patio


11 Hampton Drive, Oakden



This drawing is for illustration purposes only
(Drawing is not to scale)

The drawing and the information contained is not intended to be part of any contract. All measurements are approximate and details intended to be relied upon should be independently verified.

LEGEND

 Air cond ducts

ESTIMATE OF AREA

141.92 Square metres/ 15.25 Squares
(Including Garage)

Desk Top Image - (Y0912-36)