

SCHINELLA.



5 Hill Street SEACLIFF PARK SA

4  2  4 

RESORT STYLE LIVING WITH SEA VIEWS - ENTERTAIN YOUR GUESTS OR SIMPLY RELAX IN THIS BEAUTIFUL TROPICAL SETTING

This unique north facing home has been superbly renovated to capture resort style living all year round.

The entrance foyer of this home overlooks a leafy, green picturesque atrium, and leads through to the spacious lounge with adjoining dining area. Sensational timber floors and Western Red Cedar ceiling beautifully complement this setting.

The lounge area has large glass sliding doors leading out onto a spacious enclosed entertaining balcony with quality

[For full version visit the website](https://www.schinellaproperty.com.au/6302060)

Type : House
Building Size : 30 sqm
Land Size : 900 sqm
View : <https://www.schinellaproperty.com.au/6302060>



Pat Schinella
08 8294 4484

5 Hill Street, Seacliff Park

Garden Shed

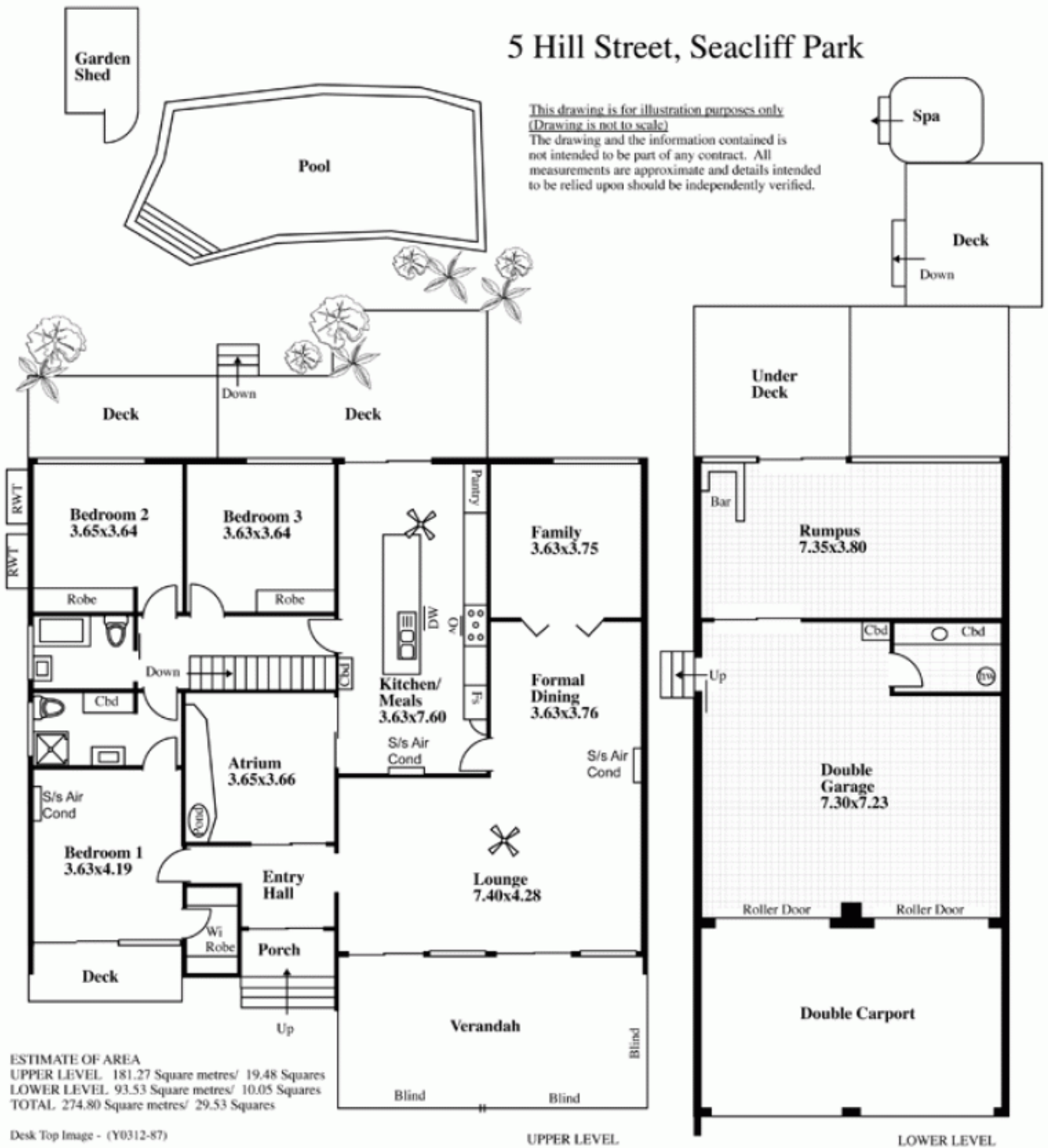
*This drawing is for illustration purposes only
(Drawing is not to scale)*

The drawing and the information contained is not intended to be part of any contract. All measurements are approximate and details intended to be relied upon should be independently verified.

Spa

Deck

Down



ESTIMATE OF AREA
 UPPER LEVEL 181.27 Square metres/ 19.48 Squares
 LOWER LEVEL 93.53 Square metres/ 10.05 Squares
 TOTAL 274.80 Square metres/ 29.53 Squares

Desk Top Image - (Y0312-87)

UPPER LEVEL

LOWER LEVEL