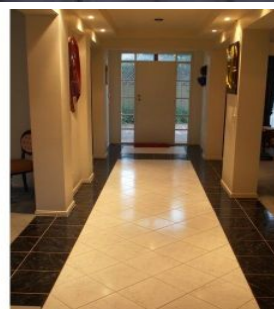


SCHINELLA.



2B Maple Street BROADVIEW SA

4  3  4 

Be amazed at what is hidden from the street when you walk through the electronic gates, with intercom, of this unique property and find an exciting family home of exceptional quality, with a versatile floor plan and plenty of space and style.

From the moment you walk through the front doors you are sure to be impressed by the proportions of the rooms of this two storey home surrounded by a private garden, in a quiet street, close to amenities and public transport.

Upstairs offers 4 bedrooms, master with ensuite, family bathroom and open landing.

While downstairs there is a formal lounge, formal dining, study and large family room. With a garage and additional

[For full version visit the website](https://www.schinellaproperty.com.au/6302052)

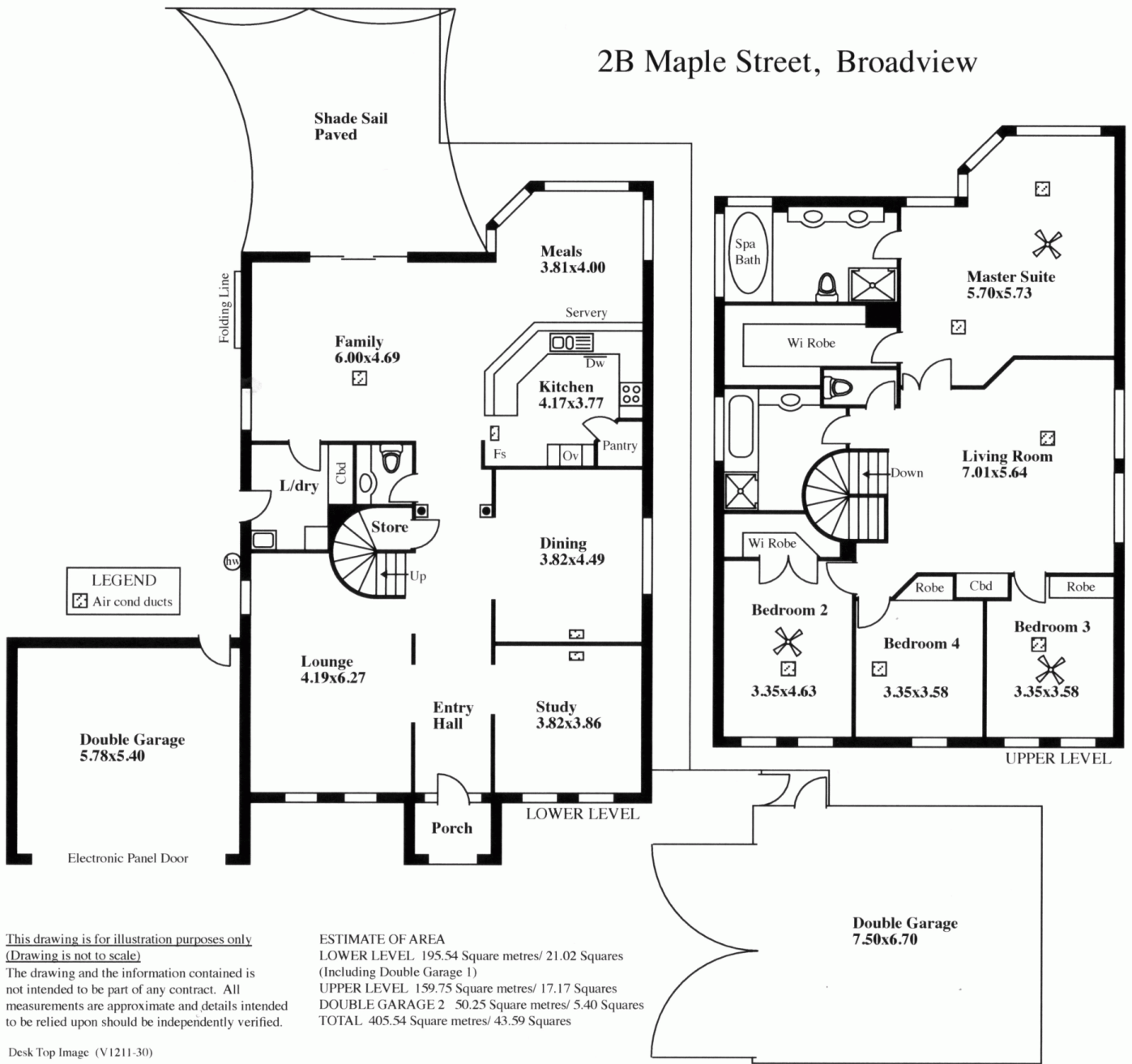
Type : House
Building Size : 33 sqm
Land Size : 952 sqm
View : <https://www.schinellaproperty.com.au/6302052>



Pat Schinella
08 8294 4484

<https://www.schinellaproperty.com.au>

2B Maple Street, Broadview



This drawing is for illustration purposes only
 (Drawing is not to scale)
 The drawing and the information contained is
 not intended to be part of any contract. All
 measurements are approximate and details intended
 to be relied upon should be independently verified.

ESTIMATE OF AREA
 LOWER LEVEL 195.54 Square metres/ 21.02 Squares
 (Including Double Garage 1)
 UPPER LEVEL 159.75 Square metres/ 17.17 Squares
 DOUBLE GARAGE 2 50.25 Square metres/ 5.40 Squares
 TOTAL 405.54 Square metres/ 43.59 Squares