

# SCHINELLA.



## 1 Hugh Street TORRENS PARK SA

4 3 2

This comfortable family home on a large allotment (1,115 sqm approx) is located in a quiet corner of this beautiful much sort after foothills suburb and it offers so much!

There is potential to move in and live an easy lifestyle with family and friends as it has plenty of room for indoor and outdoor entertainment while enjoying spectacular views to the city and the sea. There is room to grow.

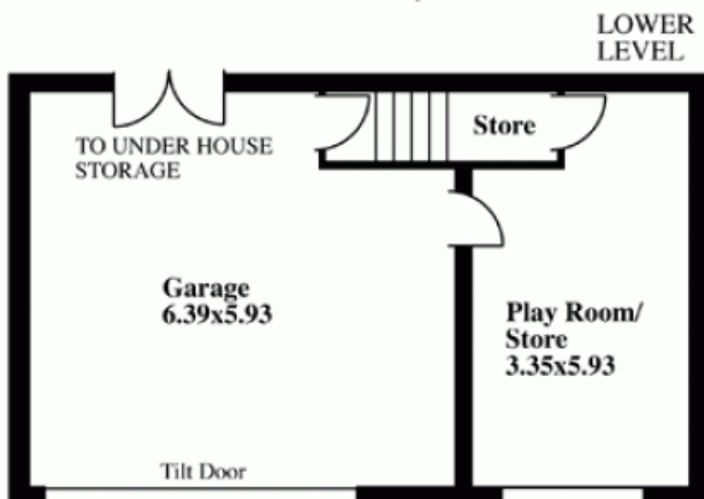
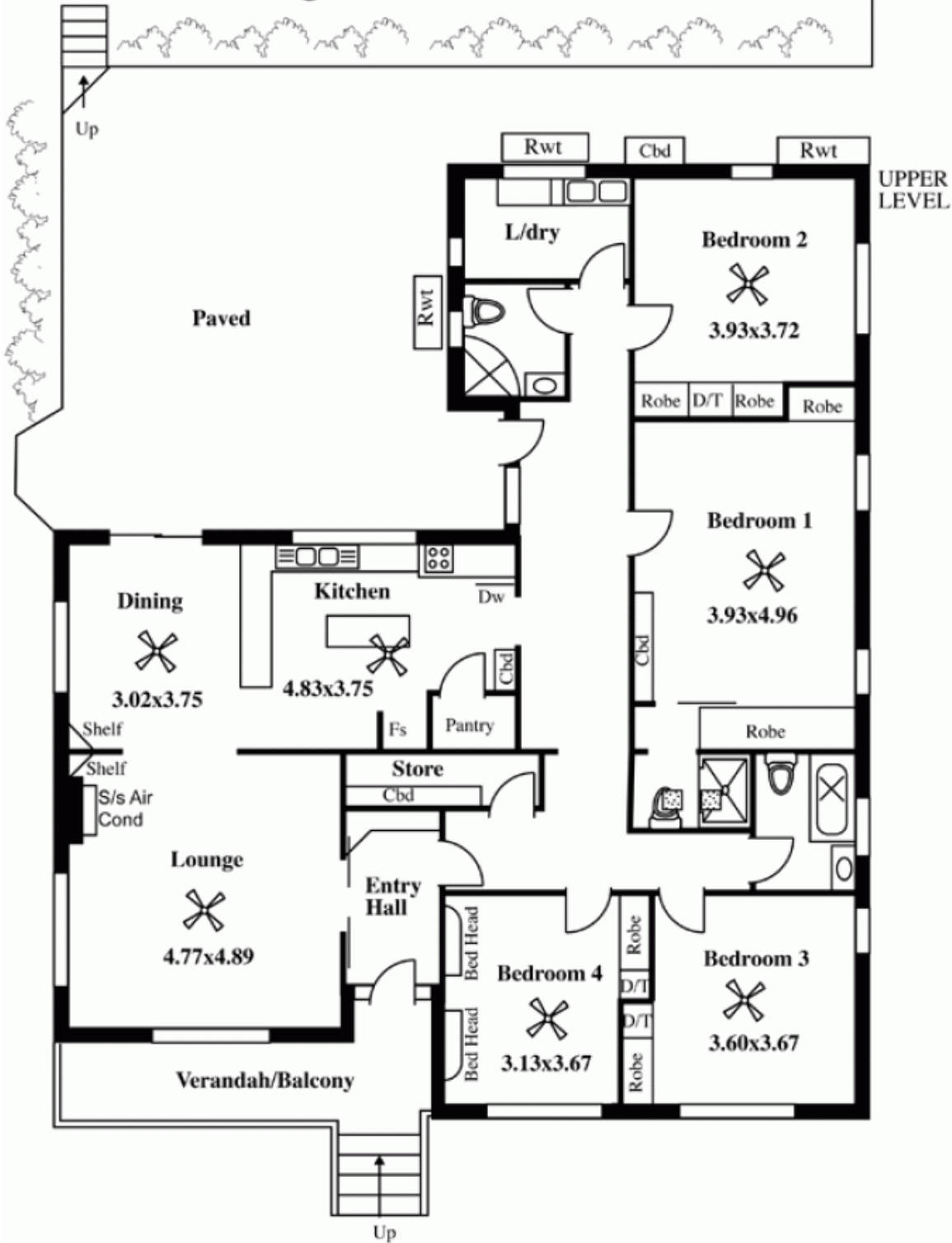
The large allotment will have great appeal to the keen gardener who is looking to live a sustainable lifestyle. Imagine your own fruit trees and veggie garden watered from the near new rainwater tanks holding 25,000 lt. The solar hot water system is another eco friendly feature.

**Type** : House  
**Building Size** : 28 sqm  
**Land Size** : 1115 sqm  
**View** : <https://www.schinellaproperty.com.au/6302051>

[For full version visit the website](https://www.schinellaproperty.com.au)

<https://www.schinellaproperty.com.au>

# 1 Hugh Street, Torrens Park



This drawing is for illustration purposes only  
(Drawing is not to scale)

The drawing and the information contained is not intended to be part of any contract. All measurements are approximate and details intended to be relied upon should be independently verified.

**ESTIMATE OF AREA**

UPPER LEVEL 195.11 Square metres/ 20.97 Squares  
 LOWER LEVEL 66.52 Square metres/ 7.15 Squares  
 TOTAL 261.59 Square metres/ 28.12 Squares