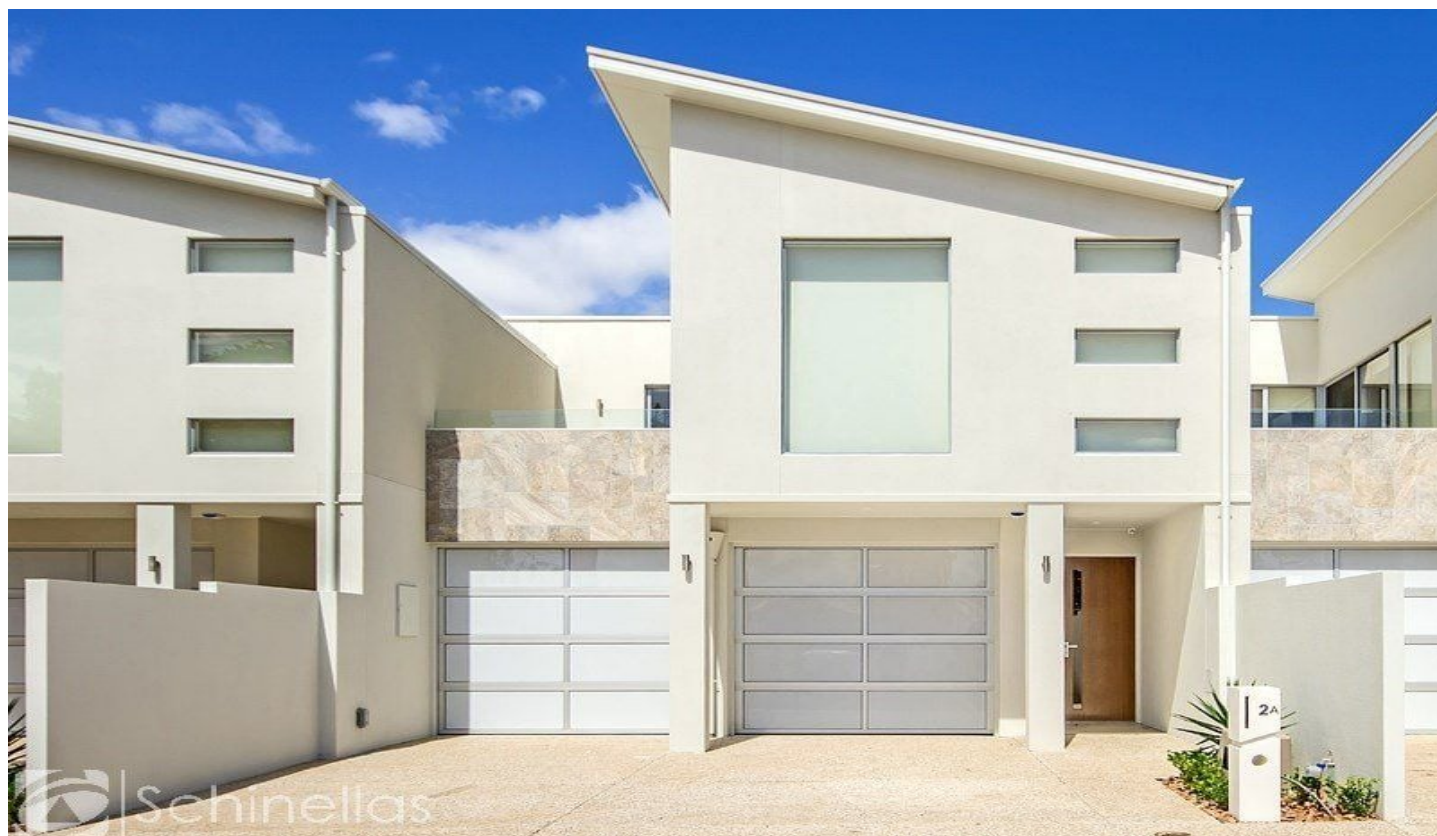





# SCHINELLA.



## 2a Russell Street Glenelg North SA

3  2  2 

Newly built luxurious, spacious  
3 bedroom townhouse in a beachside location with quality fittings throughout

Downstairs is a light filled open plan living and dining area in

neutral tones

with porcelain floors ,designer kitchen,caesar stone benchtops

with european appliances gas cooktop & dishwasher The kitchen leads out to an undercover alfresco entertaining area and courtyard.

Adjacent the downstairs living area is a powder room for convenience and a generous laundry with plenty of storage and bench top space. There is also access to a secure

**Type** : House

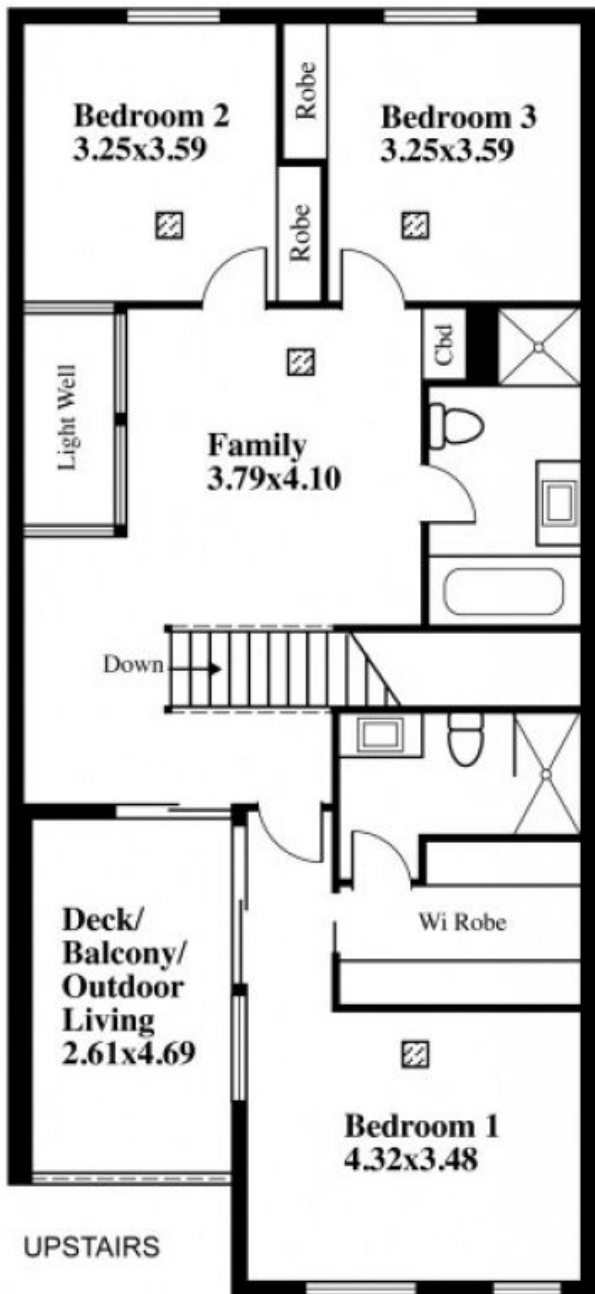
**View** : <https://www.schinellaproperty.com.au/6301994>

[For full version visit the website](https://www.schinellaproperty.com.au)

<https://www.schinellaproperty.com.au>

# Corner Of Tapleys Hill Road & Russell Street, Glenelg

**LEGEND**  
 Air cond ducts



This drawing is for illustration purposes only.  
(Drawing is not to scale)

The drawing and the information contained is not intended to be part of any contract. All measurements are approximate and details intended to be relied upon should be independently verified.

**ESTIMATE OF AREA**  
 GROUND FLOOR 119.36 Square metres/ 12.83 Squares  
 (Including Garage)  
 UPSTAIRS 126.48 Square metres/ 13.59 Squares  
 FRONT VERANDAH 8.10 Square metres/ 0.87 Squares  
 OUTDOOR LIVING 15.36 Square metres/ 1.65 Squares  
**TOTAL 269.30 Square metres/ 28.94 Squares**