

SCHINELLA.



6 Kestral Way Modbury Heights SA

3  1  2 

Immaculate from front door to back this cute colonial classic is perfect as is, while offering plenty of scope to renovate and add instant value to your investment.

Featuring three bedrooms (main with built-in wardrobe), large formal lounge with built-in bar, and kitchen with gas cooktops and adjoining dining area.

The dining area opens to the large rear verandah providing plenty of space to entertain family and friends, and the spacious yard is ideal for families.

With ducted reverse-cycle air-conditioning, undercover vehicle space, manicured gardens, and close to local shops, parks and amenities - this would make the ideal starter, family home or sound investment property.

Type : House

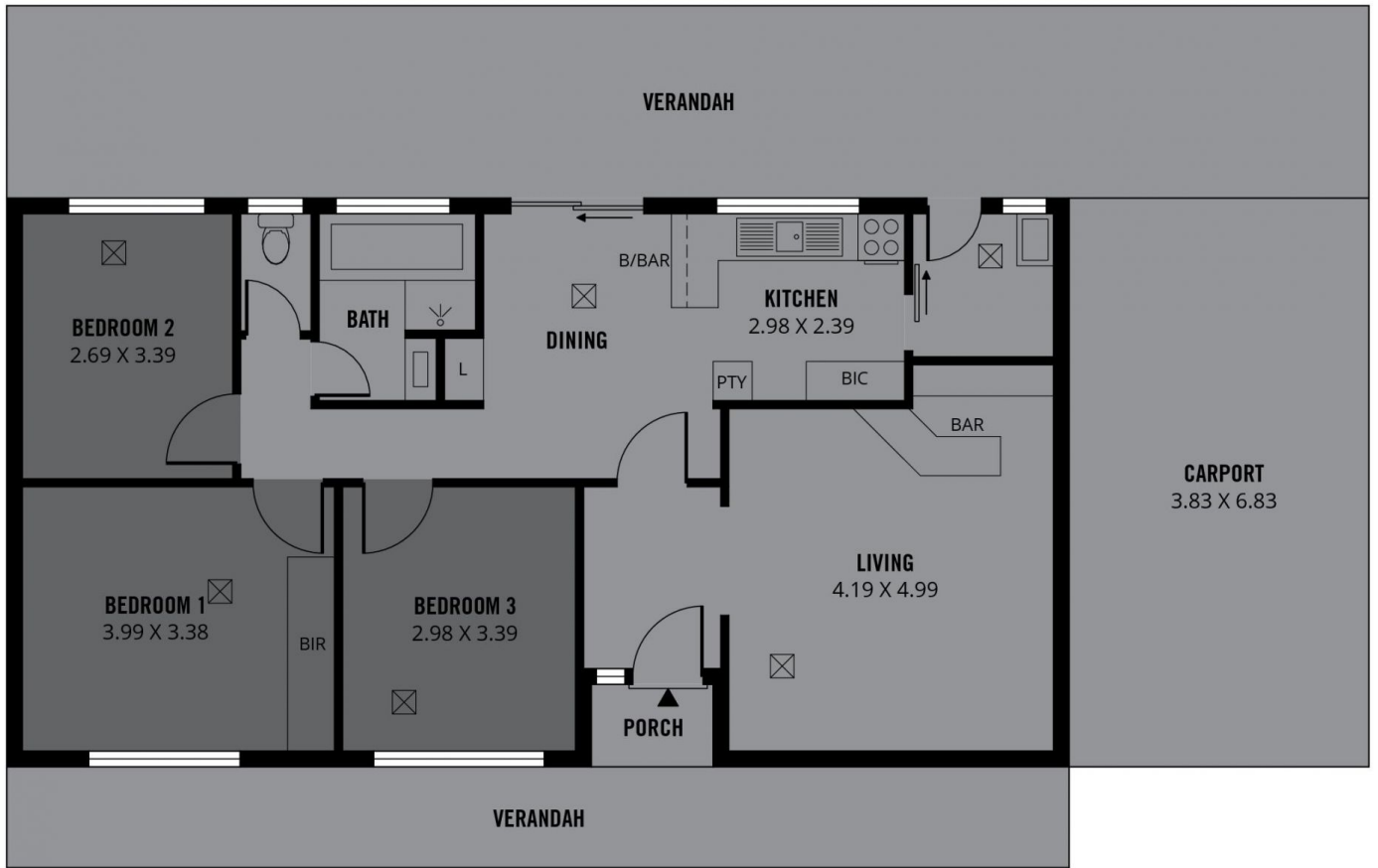
Price : \$ 335,000

Land Size : 610 sqm

View : <https://www.schinellaproperty.com.au/57535>
45



Damian Popowycz
0413 026 026



185m²

TOTAL

99m²

Living

60m²

Verandah

26m²

Carport

Scale in metres. This drawing is for illustration purposes only. All measurements are approximate and details intended to be relied upon should be independently verified.

Produced by **The Fotobase Group**