

SCHINELLA.



17 Park Avenue Semaphore South SA

2  1  2 

Perfectly positioned just a short stroll from the beach and across from Glanville Hall Golf Course, this bluestone fronted courtyard home offers convenient low-maintenance living and is perfect for first home buyers, investors or those downsizing.

Featuring two bedrooms (main with walk-in wardrobe), two-way ensuite bathroom, and spacious laundry with excellent storage space. At the rear of the home, the kitchen offers quality appliances and overlooks the generous open plan living and dining area which in turn opens to the outdoor entertaining space and manicured gardens - the perfect place to enjoy with family and friends.

With air-conditioning, garage with auto-door, and secure

Type : House

Price : \$ 422,500

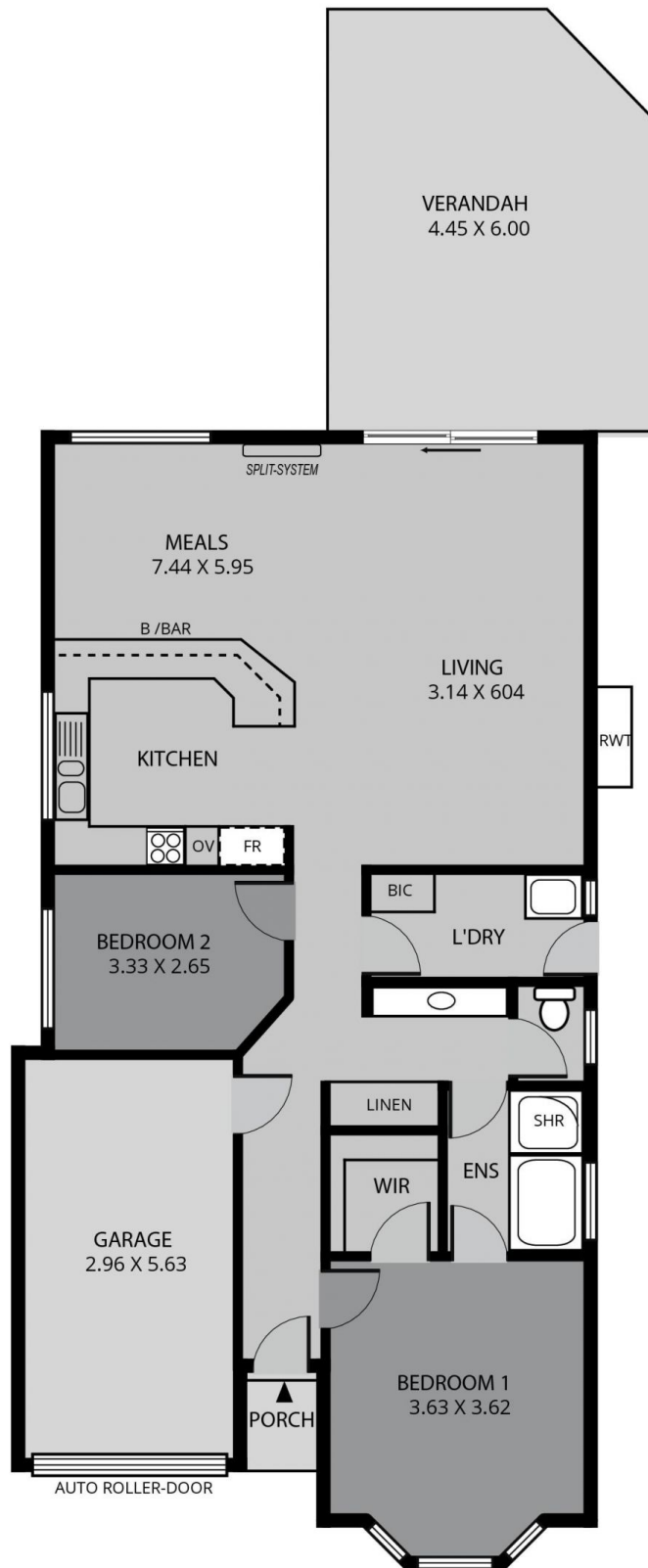
View : <https://www.schinellaproperty.com.au/5753531>



Damian Popowycz
0413 026 026

[For full version visit the website](https://www.schinellaproperty.com.au)

<https://www.schinellaproperty.com.au>



142m

TOTAL

97m²

Living

17m²

Garage

02m²

Porch

27m²

Verandah

Scale in metres. This drawing is for illustration purposes only. All measurements are approximate and details intended to be relied upon should be independently verified.

Produced by **The Fotobase Group**