

SCHINELLA.



22 Alvis Road Croydon Park SA

4  1  1 

Perfectly presented from front to back, this solid family home offers multiple living spaces, spacious rooms and is situated on a large allotment of approx 700sqm. Close to shops, sporting facilities and transport links with easy access to the CBD, it is ready to move straight in while leaving scope to further enhance to add instant value and equity.

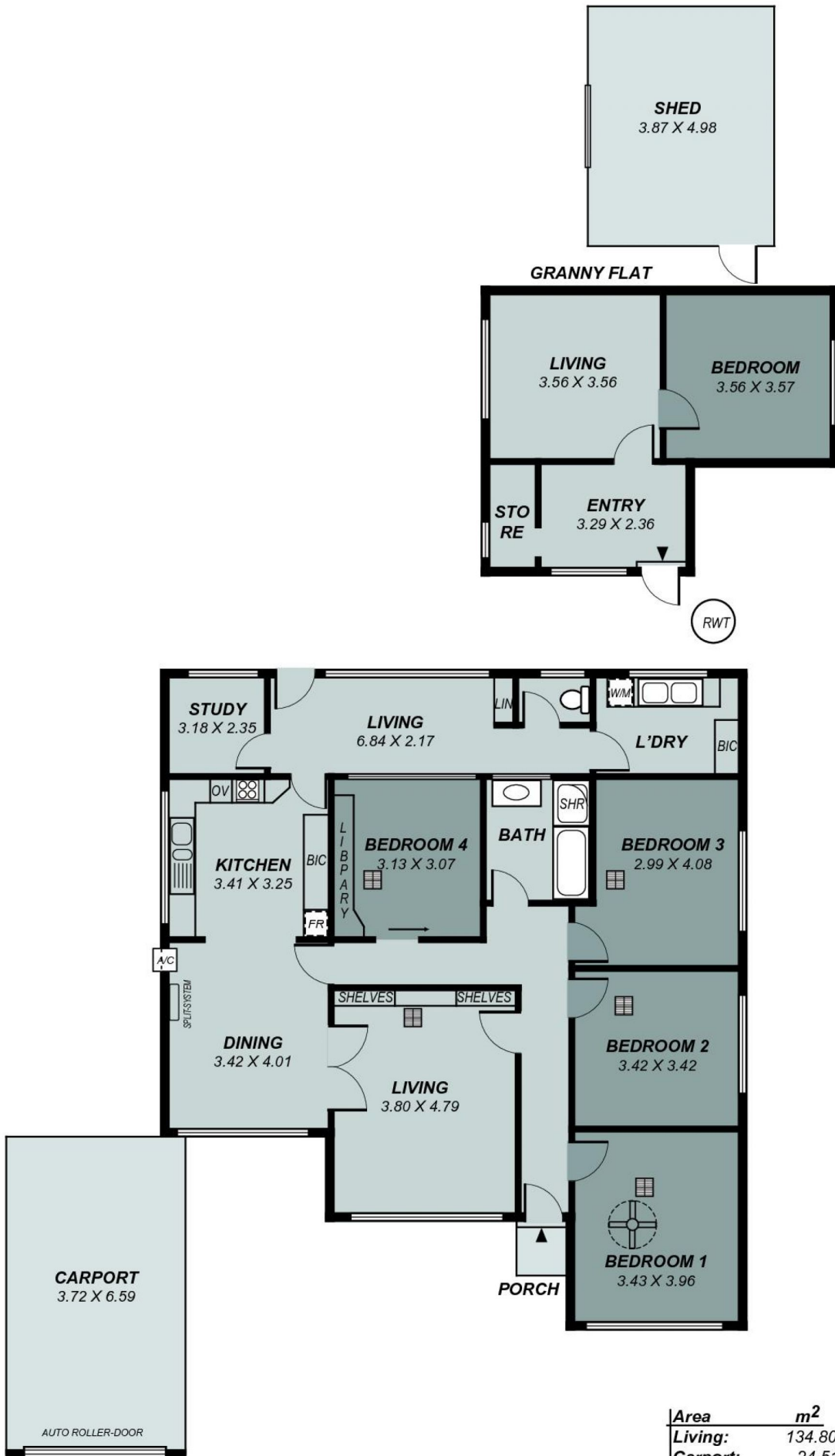
A rare offering - featuring four bedrooms plus study, large central bathroom, updated kitchen adjoining the formal dining room and a formal lounge. A bright sunroom across the rear of the home offers a valuable second living space. The 700sqm allotment means there is room for the children to run or extend the home if desired. The detached rumpus/retreat can be renovated to provide a third living area/teenager's retreat or granny flat.

[For full version visit the website](https://www.schinellaproperty.com.au/5753504)

Type : House
Price : \$ 535,000
Land Size : 700 sqm
View : <https://www.schinellaproperty.com.au/5753504>



Damian Popowycz
0413 026 026



This drawing is for illustration purposes only .
 All measurements are approximate and details intended
 to be relied upon should be independently verified.

Area	m ²
Living:	134.80
Carport:	24.51
Granny:	34.89
Shed:	19.27
Total:	213.48