

# SCHINELLA.



17a Seventh Avenue Cheltenham SA

3  1  2 

Located in one of Cheltenham's finest streets, this stone fronted character residence is immaculate throughout and would make the perfect family home. With scope to further update or extend the options are almost endless.

Set on a commanding allotment of approx 813sqm, the home features a large entry hall, 3 bedrooms (main with built-in wardrobes), open plan living feel with formal lounge adjoining formal dining, centrally located retro-style kitchen plus the convenience of a second living space.

The bathroom and laundry have already been updated leaving you nothing to do but move in. A detached rumpus room/teenager's retreat will appeal to young families and the huge allotment means there is plenty of room for the children to play - or to extend the home if desired.

With polished timber floors, air-conditioning, heating,

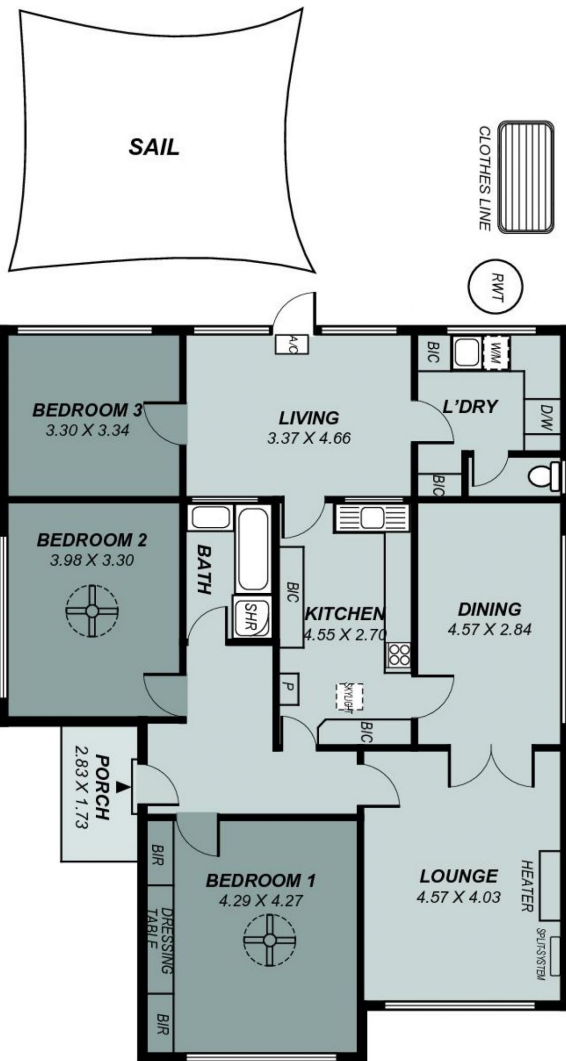
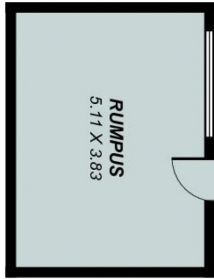
**Type** : House  
**Price** : \$ 631,000  
**Land Size** : 813 sqm  
**View** : <https://www.schinellaproperty.com.au/5753501>



**Damian Popowycz**  
0413 026 026

[For full version visit the website](https://www.schinellaproperty.com.au)

<https://www.schinellaproperty.com.au>



Area	m <sup>2</sup>
Living:	130.50
Rumpus:	19.57
Porch:	4.90
Shed:	20.43
<b>Total:</b>	<b>175.40</b>

This drawing is for illustration purposes only.  
All measurements are approximate and details intended to be relied upon should be independently verified.