

SCHINELLA.



3 Pens Close Brompton SA

2 1 1

This delightful courtyard home is set in a picturesque dress circle location opposite a park in the heart of trendy Brompton.

Perfectly positioned on the edge of the CBD it offers easy access to schools, transport, the cosmopolitan eateries of North Adelaide, and Adelaide Oval.

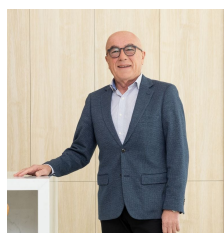
Featuring five main rooms of large proportions the home offers spacious bedrooms with built-in robes, open plan living and dining, bright central courtyard, and undercover entertaining space in the private rear yard.

Torrens titled, with ducted reverse-cycle air-conditioning, lock-up garage and neat and tidy throughout. Guaranteed to impress - be quick for this one!

Type : House

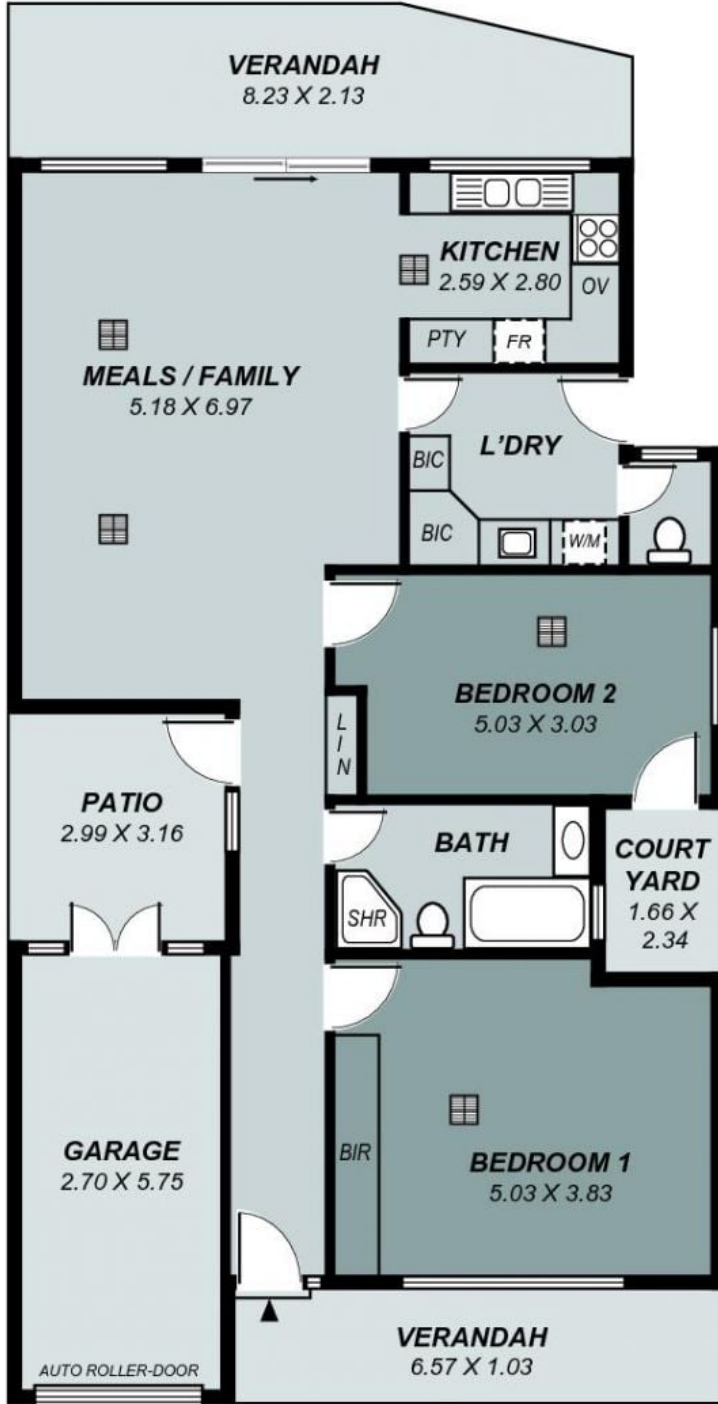
Price : \$ 447,500

View : <https://www.schinellaproperty.com.au/5753490>



Mick Mehicic
0412452262

SHED
2.26 X 1.55



Area	m ²
Living:	109.27
Patio:	09.45
Courtyard:	03.88
Garage:	36.60
Verandah:	24.30
Shed:	03.50
Total:	165.93

*This drawing is for illustration purposes only .
All measurements are approximate and details intended
to be relied upon should be independently verified.*