

SCHINELLA.



4/23 Gertrude Street Brooklyn Park SA

2  1  1 

Located at the rear of this small group, this homette offers privacy, security and spacious living. Perfectly positioned between the city and the sea this would make a ideal first home or savvy investment.

Featuring two double bedrooms (main with BIR), kitchen with garden views, and a large open plan living and dining area which opens to the lush gardens of the private rear yard. The bright bathroom contains a bath and separate shower, and the separate laundry also has BIR's and direct access to the yard.

Generous linen cupboards in the hallway provide valuable storage space and the lock-up garage offers secure vehicle parking. With ducted air-conditioning and gas heating - this is excellent value buying.

Type : Unit

Price : \$ 312,000

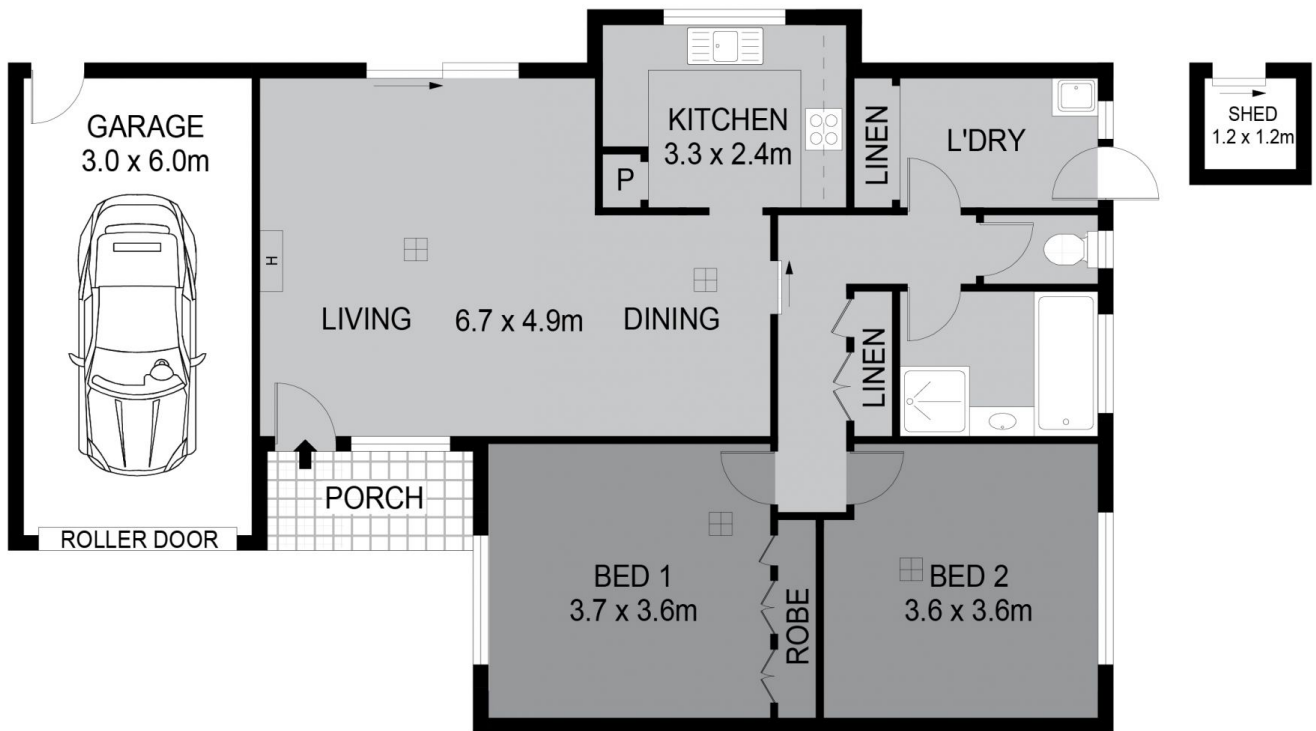
View : <https://www.schinellaproperty.com.au/5753484>



Damian Popowycz
0413 026 026

[For full version visit the website](https://www.schinellaproperty.com.au)

<https://www.schinellaproperty.com.au>



Scale in metres. Indicative only. Dimensions are approximate. All information contained herein is gathered from sources we believe to be reliable. However we cannot guarantee its accuracy and interested persons should rely on their own enquiries

Area	M ²
Living	83
Garage	18
Porch	03
Total	104

4/23 Gertrude Street, Brooklyn Park