

SCHINELLA.



3 Alma Street Athol Park SA

3  1  2 

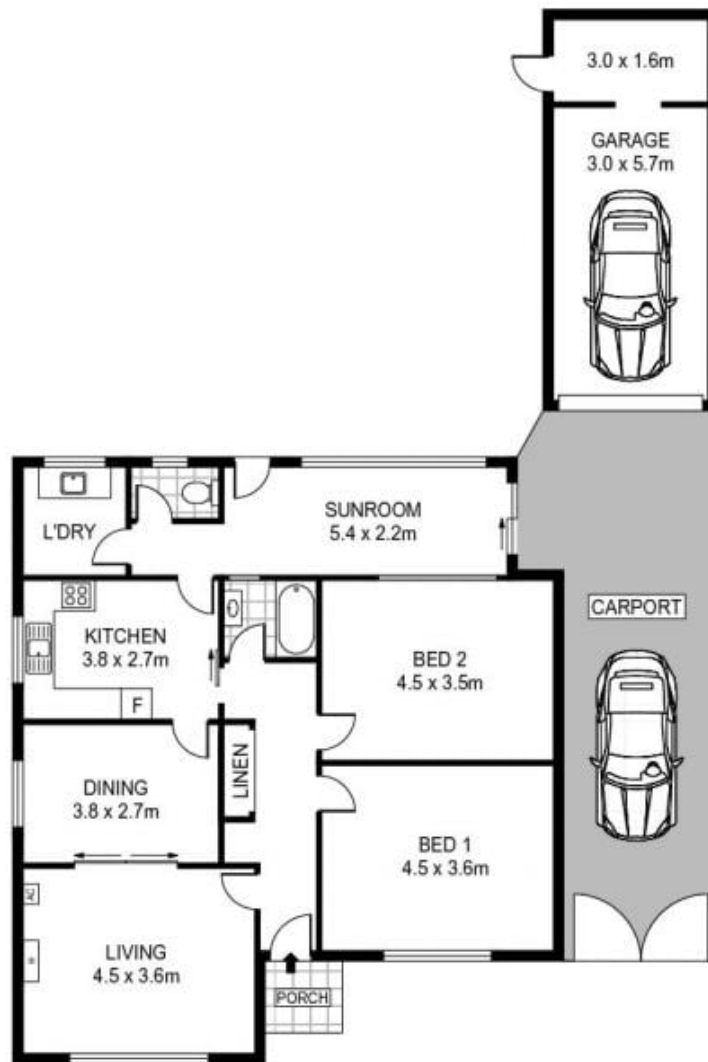
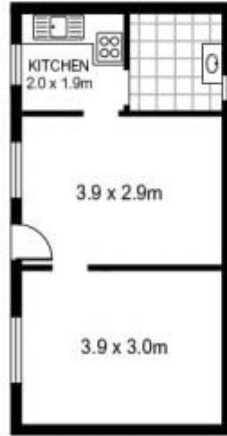
Located close to shops, public transport and local schools, this property would make the ideal first home, investment property, or even development opportunity (s.t.c.c.).

Set on a spacious allotment of approximately 725sqm and perfectly positioned opposite a reserve and sports field, this property is neatly presented throughout with new carpet. Offering two large bedrooms, large formal lounge which opens to the formal dining room. A detached granny flat is ripe for renovation but could make the ideal teenagers retreat with third bedroom option.

Type : House
Land Size : 725 sqm
View : <https://www.schinellaproperty.com.au/57534>
76



Damian Popowycz
0413 026 026



Scale in metres indicative only. Dimensions are approximate. All information contained herein is gathered from sources we believe to be reliable. However we cannot guarantee its accuracy and interested persons should rely on their own enquiries

INT : 103m²
GARAGE : 17m²

3 Alma Street, Athol Park