




# SCHINELLA.



**5 Liberton Avenue Croydon Park SA**

**6**  **2**  **6** 

This character home offers much more than meets the eye. Located close to the CBD with easy access to schools, shopping and public transport it is ideal for those looking for spacious accommodation with scope to enhance and add further value.

The ground floor comprises four double bedrooms, an updated main bathroom and laundry. A central hallway leads to the large extension at the rear. Here, a large timber kitchen with stone benchtops overlooks the tiled open plan living and dining area.

A pergola at the rear allows for outdoor entertaining, while the detached rumpus room is the perfect teenagers retreat.

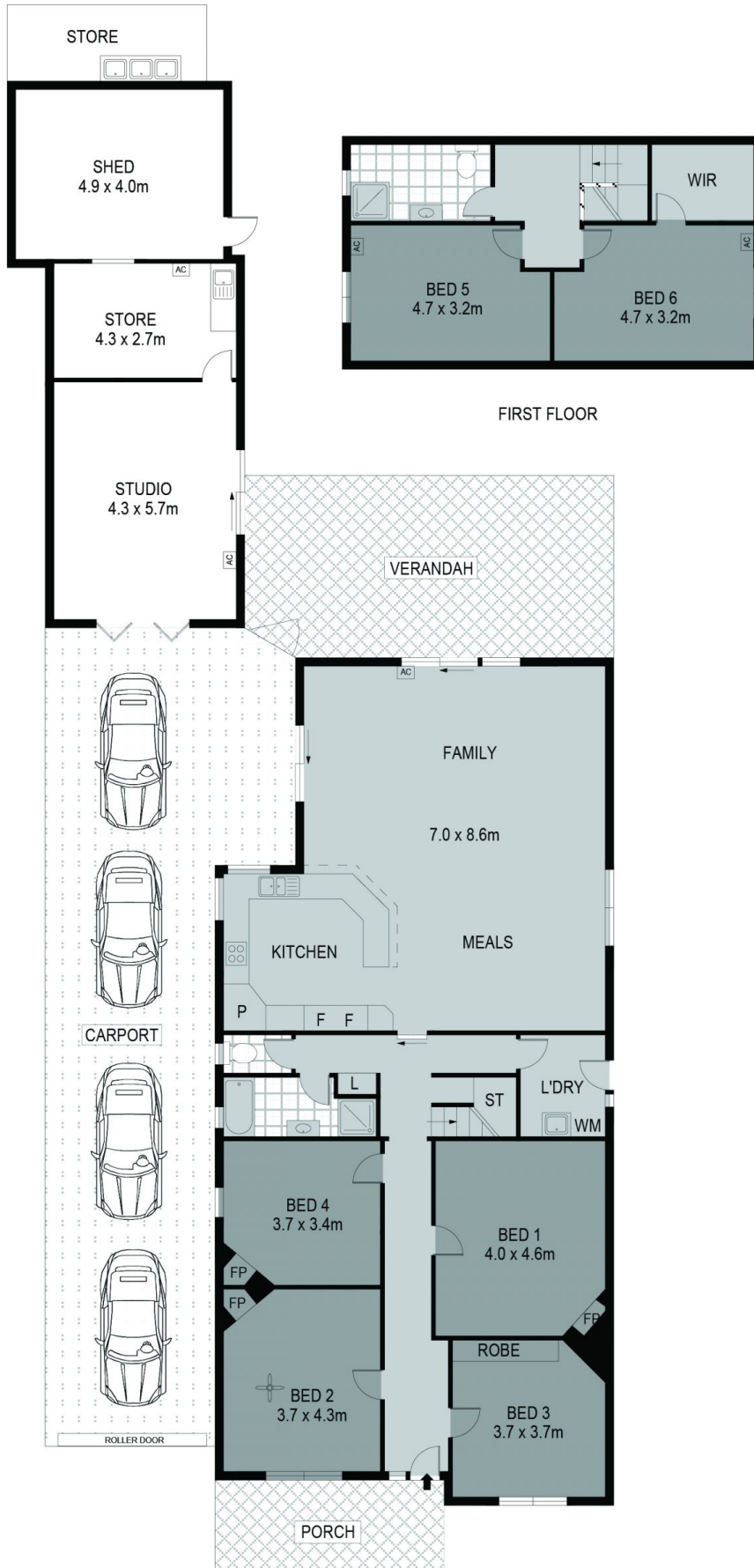
**Type** : House  
**Price** : \$ 586,500  
**Land Size** : 691 sqm  
**View** : <https://www.schinellaproperty.com.au/5753457>



**Damian Popowycz**  
**0413 026 026**

[For full version visit the website](https://www.schinellaproperty.com.au)

<https://www.schinellaproperty.com.au>



Scale in metres. Indicative only. Dimensions are approximate. All information contained herein is gathered from sources we believe to be reliable. However we cannot guarantee its accuracy and interested persons should rely on their own enquiries

INT : 212m<sup>2</sup>  
 STUDIO : 24m<sup>2</sup>

5 Liberton Avenue, Croydon Park